

Datasheet for ABIN2775139
anti-ZFP42 antibody (N-Term)



[Go to Product page](#)

3 Images

Overview

Quantity:	100 µL
Target:	ZFP42
Binding Specificity:	N-Term
Reactivity:	Human
Host:	Rabbit
Clonality:	Polyclonal
Conjugate:	This ZFP42 antibody is un-conjugated
Application:	Western Blotting (WB)

Product Details

Immunogen:	The immunogen is a synthetic peptide directed towards the N terminal region of human ZFP42
Sequence:	MSQQLKKRAK TRHQKGLGGR APSGAKPRQG KSSQDLQAEI EPVSAVWALC
Predicted Reactivity:	Human: 100%
Characteristics:	This is a rabbit polyclonal antibody against ZFP42. It was validated on Western Blot using a cell lysate as a positive control.
Purification:	Affinity Purified

Target Details

Target:	ZFP42
Alternative Name:	ZFP42 (ZFP42 Products)

Target Details

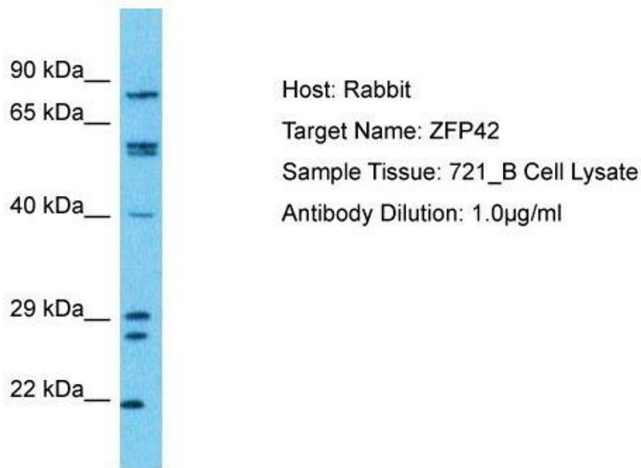
Background:	ZFP42 is a transcription factors and a specific marker of undifferentiated embryonic stem (ES) cells. Alias Symbols: REX1, ZNF754 Protein Interaction Partner: RYBP, YAF2, EED, UBC, RNF2, RING1, Protein Size: 310
Molecular Weight:	35 kDa
Gene ID:	132625
NCBI Accession:	NM_174900 , NP_777560
UniProt:	Q96MM3

Application Details

Application Notes:	Optimal working dilutions should be determined experimentally by the investigator.
Comment:	Antigen size: 310 AA
Restrictions:	For Research Use only

Handling

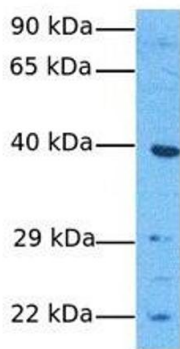
Format:	Liquid
Concentration:	Lot specific
Buffer:	Liquid. Purified antibody supplied in 1x PBS buffer with 0.09 % (w/v) sodium azide and 2 % sucrose.
Preservative:	Sodium azide
Precaution of Use:	This product contains Sodium azide: a POISONOUS AND HAZARDOUS SUBSTANCE which should be handled by trained staff only.
Handling Advice:	Avoid repeated freeze-thaw cycles.
Storage:	-20 °C
Storage Comment:	For short term use, store at 2-8°C up to 1 week. For long term storage, store at -20°C in small aliquots to prevent freeze-thaw cycles.



Western Blotting

Image 1. Host: Rabbit Target Name: ZFP42 Sample Type: 721_B Whole cell lysates Antibody Dilution: 1.0ug/ml

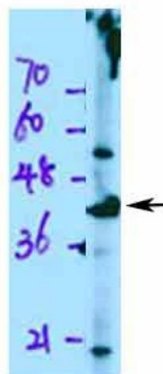
ZFP42



Western Blotting

Image 2. Host: Rabbit Target Name: ZFP42 Sample Tissue: Human Jurkat Antibody Dilution: 1.0ug/ml

ZFP42



Western Blotting

Image 3. WB Suggested Anti-ZFP42 Antibody Titration: 0.2-1 ug/ml ELISA Titer: 1:312500 Positive Control: Jurkat cell lysate

See Immunoblot 1 Data and Customer Feedback tab for more information.