

Datasheet for ABIN2775173
anti-ZNF251 antibody (Middle Region)[Go to Product page](#)

1 Image

Overview

Quantity:	100 µL
Target:	ZNF251
Binding Specificity:	Middle Region
Reactivity:	Human, Mouse, Rat, Cow, Rabbit, Guinea Pig, Horse, Zebrafish (Danio rerio)
Host:	Rabbit
Clonality:	Polyclonal
Conjugate:	This ZNF251 antibody is un-conjugated
Application:	Western Blotting (WB)

Product Details

Immunogen:	The immunogen is a synthetic peptide directed towards the middle region of human ZNF251
Sequence:	NLDQNVVRLQ RNKTGERVFK CDICSKTFKY NSDLSRHQRS HTGEKPYECG
Predicted Reactivity:	Cow: 85%, Guinea Pig: 93%, Horse: 91%, Human: 100%, Mouse: 93%, Rabbit: 86%, Rat: 93%, Zebrafish: 83%
Characteristics:	This is a rabbit polyclonal antibody against ZNF251. It was validated on Western Blot using a cell lysate as a positive control.
Purification:	Affinity Purified

Target Details

Target:	ZNF251
---------	--------

Target Details

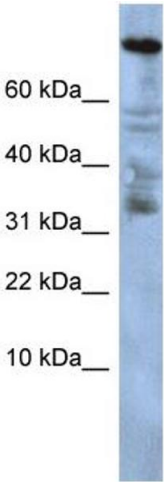
Alternative Name:	ZNF251 (ZNF251 Products)
Background:	ZNF251 may be involved in transcriptional regulation. Alias Symbols: FLJ34319 Protein Interaction Partner: SMAD1, PAXIP1, MDC1, FEZ1, FEZ2, Protein Size: 671
Molecular Weight:	74 kDa
Gene ID:	90987
NCBI Accession:	XM_291262 , XP_291262

Application Details

Application Notes:	Optimal working dilutions should be determined experimentally by the investigator.
Comment:	Antigen size: 671 AA
Restrictions:	For Research Use only

Handling

Format:	Liquid
Concentration:	Lot specific
Buffer:	Liquid. Purified antibody supplied in 1x PBS buffer with 0.09 % (w/v) sodium azide and 2 % sucrose.
Preservative:	Sodium azide
Precaution of Use:	This product contains Sodium azide: a POISONOUS AND HAZARDOUS SUBSTANCE which should be handled by trained staff only.
Handling Advice:	Avoid repeated freeze-thaw cycles.
Storage:	-20 °C
Storage Comment:	For short term use, store at 2-8°C up to 1 week. For long term storage, store at -20°C in small aliquots to prevent freeze-thaw cycles.



Western Blotting

Image 1. WB Suggested Anti-ZNF251 Antibody Titration:
0.2-1 ug/ml ELISA Titer: 1:1562500 Positive Control:
HepG2 cell lysate