

Datasheet for ABIN2775184
anti-RENT1/UPF1 antibody (Middle Region)[Go to Product page](#)

2 Images

Overview

Quantity:	100 µL
Target:	RENT1/UPF1 (UPF1)
Binding Specificity:	Middle Region
Reactivity:	Human, Mouse, Rat, Cow, Dog, Guinea Pig, Zebrafish (Danio rerio), Horse
Host:	Rabbit
Clonality:	Polyclonal
Conjugate:	This RENT1/UPF1 antibody is un-conjugated
Application:	Western Blotting (WB), Immunohistochemistry (IHC)

Product Details

Immunogen:	The immunogen is a synthetic peptide directed towards the middle region of human UPF1
Sequence:	RGTPKGKTGR GGRQKNRFLG PGPSQTNLPN SQASQDVASQ PFSQGALTQG
Predicted Reactivity:	Cow: 100%, Dog: 100%, Guinea Pig: 79%, Horse: 93%, Human: 100%, Mouse: 93%, Rat: 93%, Zebrafish: 83%
Characteristics:	This is a rabbit polyclonal antibody against UPF1. It was validated on Western Blot using a cell lysate as a positive control.
Purification:	Affinity Purified

Target Details

Target:	RENT1/UPF1 (UPF1)
---------	-------------------

Target Details

Alternative Name: UPF1 ([UPF1 Products](#))

Background: UPF1 is a protein that is part of a post-splicing multiprotein complex involved in both mRNA nuclear export and mRNA surveillance. mRNA surveillance detects exported mRNAs with truncated open reading frames and initiates nonsense-mediated mRNA decay (NMD). When translation ends upstream from the last exon-exon junction, this triggers NMD to degrade mRNAs containing premature stop codons. UPF1 is located only in the cytoplasm. When translation ends, it interacts with the protein that is a functional homolog of yeast Upf2p to trigger mRNA decapping. Use of multiple polyadenylation sites has been noted for this gene. This gene encodes a protein that is part of a post-splicing multiprotein complex involved in both mRNA nuclear export and mRNA surveillance. mRNA surveillance detects exported mRNAs with truncated open reading frames and initiates nonsense-mediated mRNA decay (NMD). When translation ends upstream from the last exon-exon junction, this triggers NMD to degrade mRNAs containing premature stop codons. This protein is located only in the cytoplasm. When translation ends, it interacts with the protein that is a functional homolog of yeast Upf2p to trigger mRNA decapping. Use of multiple polyadenylation sites has been noted for this gene. Publication Note: This RefSeq record includes a subset of the publications that are available for this gene. Please see the Entrez Gene record to access additional publications. Alias Symbols: FLJ43809, FLJ46894, HUPF1, KIAA0221, NORF1, RENT1, pNORF1, smg-2 Protein Interaction Partner: UBC, SUMO2, STAU1, CDC37, IVNS1ABP, MOV10, DNA2, POP1, LIN28A, UPF3B, STAU2, UPF2, EZH2, BMI1, SUZ12, RNF2, GNPTG, RHOXF2, ACSS2, NADSYN1, PLEKHB2, PLEKHA5, TARDBP, RPRD2, ABHD16A, NDUFB10, DXO, SMG1, RUVBL2, RBM8A, SMG7, EIF4A3, RUVBL1, GSPT2, SMG5, GSPT Protein Size: 1118

Molecular Weight: 123 kDa

Gene ID: 5976

NCBI Accession: [NM_002911](#), [NP_002902](#)

UniProt: [Q92900](#)

Pathways: [SARS-CoV-2 Protein Interactome](#)

Application Details

Application Notes: Optimal working dilutions should be determined experimentally by the investigator.

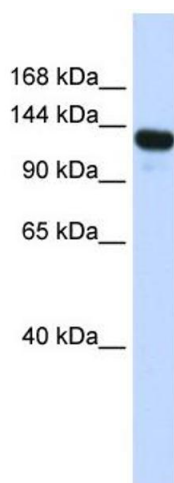
Comment: Antigen size: 1118 AA

Restrictions: For Research Use only

Handling

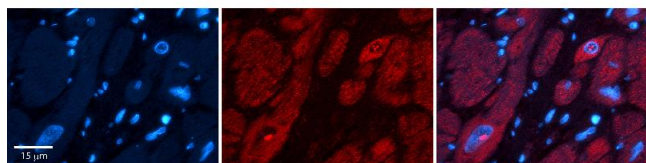
Format:	Liquid
Concentration:	Lot specific
Buffer:	Liquid. Purified antibody supplied in 1x PBS buffer with 0.09 % (w/v) sodium azide and 2 % sucrose.
Preservative:	Sodium azide
Precaution of Use:	This product contains Sodium azide: a POISONOUS AND HAZARDOUS SUBSTANCE which should be handled by trained staff only.
Handling Advice:	Avoid repeated freeze-thaw cycles.
Storage:	-20 °C
Storage Comment:	For short term use, store at 2-8°C up to 1 week. For long term storage, store at -20°C in small aliquots to prevent freeze-thaw cycles.

Images



Western Blotting

Image 1. WB Suggested Anti-UPF1 Antibody Titration: 0.2-1 ug/ml ELISA Titer: 1:312500 Positive Control: Transfected 293T



Immunohistochemistry

Image 2. Rabbit Anti-UPF1 Antibody Formalin Fixed Paraffin Embedded Tissue: Human heart Tissue Observed Staining: Cytoplasmic, nucleus Primary Antibody Concentration: 1:100 Other Working Concentrations: N/A Secondary Antibody: Donkey anti-Rabbit-Cy3 Secondary Antibody Concentration: 1:200 Magnification: 20X Exposure Time: 0.5 - 2.0 sec