

Datasheet for ABIN2775193
anti-DDX6 antibody (N-Term)

3 Images

[Go to Product page](#)

Overview

Quantity:	100 µL
Target:	DDX6
Binding Specificity:	N-Term
Reactivity:	Human, Mouse, Rat, Dog, Rabbit, Horse, Cow, Guinea Pig, Zebrafish (Danio rerio), Goat, Saccharomyces cerevisiae
Host:	Rabbit
Clonality:	Polyclonal
Conjugate:	This DDX6 antibody is un-conjugated
Application:	Western Blotting (WB)

Product Details

Immunogen:	The immunogen is a synthetic peptide directed towards the N terminal region of human DDX6
Sequence:	CLKRELLMGI FEMGWKSPSP IQEESIPIAL SGRDILARAK NGTGKSGAYL
Predicted Reactivity:	Cow: 100%, Dog: 100%, Goat: 100%, Guinea Pig: 100%, Horse: 100%, Human: 100%, Mouse: 100%, Rabbit: 100%, Rat: 100%, Yeast: 100%, Zebrafish: 100%
Characteristics:	This is a rabbit polyclonal antibody against DDX6. It was validated on Western Blot.
Purification:	Affinity Purified

Target Details

Target:	DDX6
---------	------

Target Details

Alternative Name:	DDX6 (DDX6 Products)
Background:	<p>This gene encodes a member of the DEAD box protein family. The protein is an RNA helicase found in P-bodies and stress granules, and functions in translation suppression and mRNA degradation. It is required for microRNA-induced gene silencing.</p> <p>Alias Symbols: FLJ36338, HLR2, P54, RCK</p> <p>Protein Interaction Partner: EDC3, BIRC7, EIF4ENIF1, RUNDC3A, SDCCAG3, IKZF1, CALCOCO2, ZNF24, TCF4, VPS52, TRIM27, NONO, TRIM37, GOLGA2, AES, ZBTB8A, KRTAP10-3, KRTAP10-8, BEND7, KRT40, PNMA5, CEP70, DCP1B, DCP1A, BAG4, UBC, FAM195B, PATL1, LSM14B, LSM12, FAM195A, NUFIP2, ATXN2L, G3</p> <p>Protein Size: 472</p>
Molecular Weight:	54 kDa
Gene ID:	1656
NCBI Accession:	NM_004397 , NP_004388
UniProt:	P26196
Pathways:	Ribonucleoprotein Complex Subunit Organization

Application Details

Application Notes:	Optimal working dilutions should be determined experimentally by the investigator.
Comment:	Antigen size: 472 AA
Restrictions:	For Research Use only

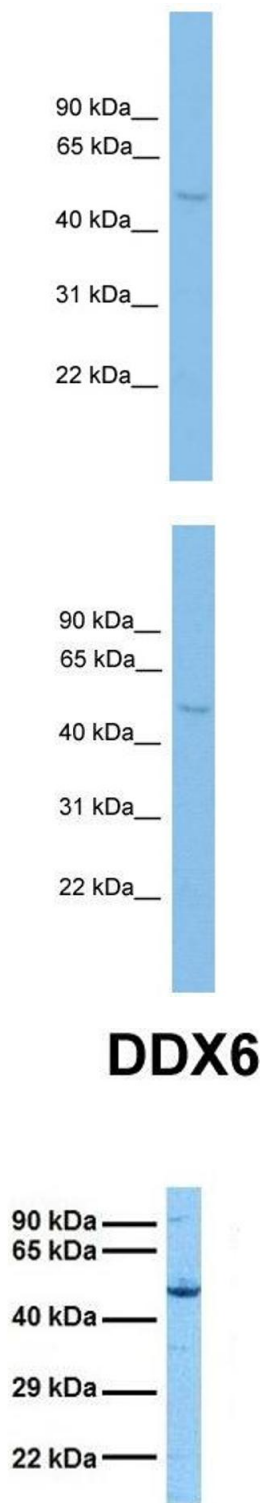
Handling

Format:	Liquid
Concentration:	Lot specific
Buffer:	Liquid. Purified antibody supplied in 1x PBS buffer with 0.09 % (w/v) sodium azide and 2 % sucrose.
Preservative:	Sodium azide
Precaution of Use:	This product contains Sodium azide: a POISONOUS AND HAZARDOUS SUBSTANCE which should be handled by trained staff only.
Handling Advice:	Avoid repeated freeze-thaw cycles.

Handling

Storage:	-20 °C
Storage Comment:	For short term use, store at 2-8°C up to 1 week. For long term storage, store at -20°C in small aliquots to prevent freeze-thaw cycles.

Images



Western Blotting

Image 1. WB Suggested Anti-DDX6 Antibody Titration: 0.2-1 ug/ml ELISA Titer: 1:312500 Positive Control: OVCAR-3 cell lysate DDX6 is supported by BioGPS gene expression data to be expressed in OVCAR3

Western Blotting

Image 2. WB Suggested Anti-DDX6 Antibody Titration: 0.2-1 µg/mL ELISA Titer: 1:12500 Positive Control: OVCAR-3 cell lysate DDX6 is supported by BioGPS gene expression data to be expressed in OVCAR3

Western Blotting

Image 3. Host: Rabbit Target Name: DDX6 Sample Tissue: Human Hela Antibody Dilution: 1.0ug/ml