

Datasheet for ABIN2775207
anti-SKIV2L antibody (Middle Region)[Go to Product page](#)[1 Image](#)[1 Publication](#)

Overview

Quantity:	100 µL
Target:	SKIV2L
Binding Specificity:	Middle Region
Reactivity:	Human, Rabbit
Host:	Rabbit
Clonality:	Polyclonal
Conjugate:	This SKIV2L antibody is un-conjugated
Application:	Western Blotting (WB)

Product Details

Immunogen:	The immunogen is a synthetic peptide directed towards the middle region of human SKIV2L
Sequence:	SSNSTSRVFT TLVLCDKPLS QDPQDRGPAT AEVPYPDDL V GFKLFLPEGP
Predicted Reactivity:	Human: 100%, Rabbit: 79%
Characteristics:	This is a rabbit polyclonal antibody against SKIV2L. It was validated on Western Blot using a cell lysate as a positive control.
Purification:	Affinity Purified

Target Details

Target:	SKIV2L
Alternative Name:	SKIV2L (SKIV2L Products)

Target Details

Background:	DEAD box proteins, characterized by the conserved motif Asp-Glu-Ala-Asp (DEAD), are putative RNA helicases. They are implicated in a number of cellular processes involving alteration of RNA secondary structure such as translation initiation, nuclear and m Alias Symbols: 170A, DDX13, HLP, SKI2, SKI2W, SKIV2 Protein Interaction Partner: UBC, LGR4, GALNT13, EXOSC4, XRN1, TNRC17, PMPCA, SNRPB, EXOSC10, FBXW4, CDK9, TSSK2, CDKL5, NDOR1, ITSN1, UBD, SIRT7, WDR1, CDK11A, Protein Size: 1246
Molecular Weight:	138 kDa
Gene ID:	6499
NCBI Accession:	NM_006929 , NP_008860
UniProt:	Q15477

Application Details

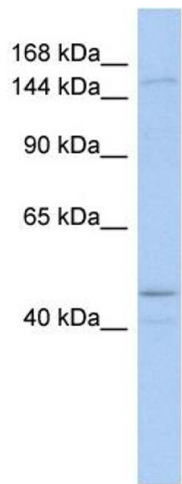
Application Notes:	Optimal working dilutions should be determined experimentally by the investigator.
Comment:	Antigen size: 1246 AA
Restrictions:	For Research Use only

Handling

Format:	Liquid
Concentration:	Lot specific
Buffer:	Liquid. Purified antibody supplied in 1x PBS buffer with 0.09 % (w/v) sodium azide and 2 % sucrose.
Preservative:	Sodium azide
Precaution of Use:	This product contains Sodium azide: a POISONOUS AND HAZARDOUS SUBSTANCE which should be handled by trained staff only.
Handling Advice:	Avoid repeated freeze-thaw cycles.
Storage:	-20 °C
Storage Comment:	For short term use, store at 2-8°C up to 1 week. For long term storage, store at -20°C in small aliquots to prevent freeze-thaw cycles.

Product cited in: Infantino, Iacobazzi, Palmieri, Menga: "ATP-citrate lyase is essential for macrophage inflammatory response." in: **Biochemical and biophysical research communications**, Vol. 440, Issue 1, pp. 105-11, (2013) ([PubMed](#)).

Validation report #100039 for Immunocytochemistry (ICC)



Western Blotting

Image 1. WB Suggested Anti-SKIV2L Antibody Titration: 0.2-1 ug/ml ELISA Titer: 1:1562500 Positive Control: COLO205 cell lysate