

Datasheet for ABIN2775213  
**anti-INTS6 antibody (C-Term)**



[Go to Product page](#)

1 Image

## Overview

Quantity:	100 µL
Target:	INTS6
Binding Specificity:	C-Term
Reactivity:	Human, Mouse, Rat, Cow, Horse, Pig, Rabbit, Dog
Host:	Rabbit
Clonality:	Polyclonal
Conjugate:	This INTS6 antibody is un-conjugated
Application:	Western Blotting (WB)

## Product Details

Immunogen:	The immunogen is a synthetic peptide directed towards the C terminal region of human INTS6
Sequence:	GFLENHEEPR DKEQCAEENI PASSLNKGKK LMHCRSHEEV NTELKAQIMK
Predicted Reactivity:	Cow: 100%, Dog: 100%, Horse: 100%, Human: 100%, Mouse: 93%, Pig: 100%, Rabbit: 100%, Rat: 93%
Characteristics:	This is a rabbit polyclonal antibody against INTS6. It was validated on Western Blot using a cell lysate as a positive control.
Purification:	Affinity Purified

## Target Details

Target:	INTS6
---------	-------

## Target Details

Alternative Name:	INTS6 ( <a href="#">INTS6 Products</a> )
Background:	<p>DEAD box proteins, characterized by the conserved motif Asp-Glu-Ala-Asp (DEAD), are putative RNA helicases. INTS6 is a DEAD box protein that is part of a complex that interacts with the C-terminus of RNA polymerase II and is involved in 3' end processing of snRNAs. In addition, this gene is a candidate tumor suppressor and located in the critical region of loss of heterozygosity (LOH). DEAD box proteins, characterized by the conserved motif Asp-Glu-Ala-Asp (DEAD), are putative RNA helicases. The protein encoded by this gene is a DEAD box protein that is part of a complex that interacts with the C-terminus of RNA polymerase II and is involved in 3' end processing of snRNAs. In addition, this gene is a candidate tumor suppressor and located in the critical region of loss of heterozygosity (LOH). Three transcript variants encoding two different isoforms have been found for this gene.</p> <p>Alias Symbols: DBI-1, DDX26, DDX26A, DICE1, DKFZP434B105, HDB, INT6, Notch12</p> <p>Protein Interaction Partner: RPA3, RPA2, RPA1, BMI1, UBC, MCM7, INTS10, CTDP1, SHFM1, DDX26B, NAIF1, INTS4, VWA9, INTS5, NABP2, C7orf26, INTS3, ZNF687, INTS2, INTS12, INTS9, ASUN, INTS8, CPSF3L, INTS6, INTS1, INTS7, ZMYND8, ZNF592, PPP2R1B, PPP2R1A, PPP2CB, PPP2CA, PPP1CB, POLR2L, PO</p> <p>Protein Size: 874</p>
Molecular Weight:	99 kDa
Gene ID:	26512
NCBI Accession:	<a href="#">NM_001039937</a> , <a href="#">NP_001035026</a>
UniProt:	<a href="#">A8MV98</a>

## Application Details

Application Notes:	Optimal working dilutions should be determined experimentally by the investigator.
Comment:	Antigen size: 874 AA
Restrictions:	For Research Use only

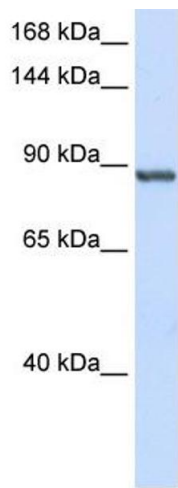
## Handling

Format:	Liquid
Concentration:	Lot specific
Buffer:	Liquid. Purified antibody supplied in 1x PBS buffer with 0.09 % (w/v) sodium azide and 2 % sucrose.

Handling

Preservative:	Sodium azide
Precaution of Use:	This product contains Sodium azide: a POISONOUS AND HAZARDOUS SUBSTANCE which should be handled by trained staff only.
Handling Advice:	Avoid repeated freeze-thaw cycles.
Storage:	-20 °C
Storage Comment:	For short term use, store at 2-8°C up to 1 week. For long term storage, store at -20°C in small aliquots to prevent freeze-thaw cycles.

Images



**Western Blotting**

**Image 1.** WB Suggested Anti-INTS6 Antibody Titration: 0.2-1 ug/ml ELISA Titer: 1:62500 Positive Control: Human Placenta