

Datasheet for ABIN2775228
anti-DHX30 antibody (N-Term)

2 Images

[Go to Product page](#)

Overview

Quantity:	100 µL
Target:	DHX30
Binding Specificity:	N-Term
Reactivity:	Human, Mouse, Rat, Cow, Dog, Rabbit, Horse, Guinea Pig
Host:	Rabbit
Clonality:	Polyclonal
Conjugate:	This DHX30 antibody is un-conjugated
Application:	Western Blotting (WB), Immunohistochemistry (IHC)

Product Details

Immunogen:	The immunogen is a synthetic peptide directed towards the N terminal region of human DHX30
Sequence:	AASRDLLKEF PQPKNLLNSV IGRALGISHA KDKLVYVHTN GPKKKKVTLH
Predicted Reactivity:	Cow: 100%, Dog: 100%, Guinea Pig: 100%, Horse: 100%, Human: 100%, Mouse: 100%, Rabbit: 100%, Rat: 100%
Characteristics:	This is a rabbit polyclonal antibody against DHX30. It was validated on Western Blot using a cell lysate as a positive control.
Purification:	Affinity Purified

Target Details

Target:	DHX30
---------	-------

Target Details

Alternative Name: DHX30 ([DHX30 Products](#))

Background: DEAD box proteins, characterized by the conserved motif Asp-Glu-Ala-Asp (DEAD), are putative RNA helicases. They are implicated in a number of cellular processes involving alteration of RNA secondary structure such as translation initiation, nuclear and mitochondrial splicing, and ribosome and spliceosome assembly. Based on their distribution patterns, some members of this DEAD box protein family are believed to be involved in embryogenesis, spermatogenesis, and cellular growth and division. DHX30 is a member of this family. The protein has 97 % sequence identity with the mouse HELG protein. Alternatively spliced transcript variants encoding distinct isoforms have been found for this gene. DEAD box proteins, characterized by the conserved motif Asp-Glu-Ala-Asp (DEAD), are putative RNA helicases. They are implicated in a number of cellular processes involving alteration of RNA secondary structure such as translation initiation, nuclear and mitochondrial splicing, and ribosome and spliceosome assembly. Based on their distribution patterns, some members of this DEAD box protein family are believed to be involved in embryogenesis, spermatogenesis, and cellular growth and division. This gene encodes a member of this family. The encoded protein has 97 % sequence identity with the mouse HELG protein. Alternatively spliced transcript variants encoding distinct isoforms have been found for this gene.

Alias Symbols: DDX30, FLJ11214, KIAA0890, Ret-CoR, RETCOR

Protein Interaction Partner: SUMO2, SUMO3, IVNS1ABP, STAU1, GRSF1, UBC, SUMO1, NEDD8, Fbxl16, WWOX, SUZ12, RNF2, EZH2, NEDD4, TARDBP, HNRNPD, EIF2AK2, SKIL, FN1, ESR1, NDUFA2, ILF3, GNAI2, RAB31, GRK5, CAND1, COPS5, CUL1, CUL3, CUL4B, CUL5, SIRT7, HNRNPA1, HDGF, DHX58, OAS3, Sgol2, Y

Protein Size: 1155

Molecular Weight: 129 kDa

Gene ID: 22907

NCBI Accession: [NM_014966](#), [NP_055781](#)

UniProt: [Q7L2E3](#)

Pathways: [Chromatin Binding](#)

Application Details

Application Notes: Optimal working dilutions should be determined experimentally by the investigator.

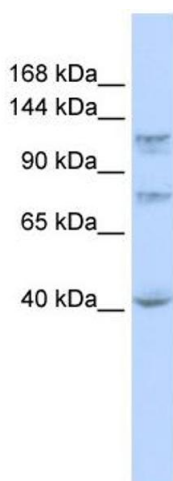
Comment: Antigen size: 1155 AA

Restrictions: For Research Use only

Handling

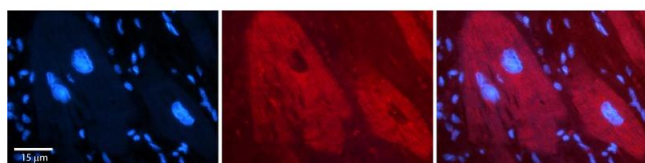
Format:	Liquid
Concentration:	Lot specific
Buffer:	Liquid. Purified antibody supplied in 1x PBS buffer with 0.09 % (w/v) sodium azide and 2 % sucrose.
Preservative:	Sodium azide
Precaution of Use:	This product contains Sodium azide: a POISONOUS AND HAZARDOUS SUBSTANCE which should be handled by trained staff only.
Handling Advice:	Avoid repeated freeze-thaw cycles.
Storage:	-20 °C
Storage Comment:	For short term use, store at 2-8°C up to 1 week. For long term storage, store at -20°C in small aliquots to prevent freeze-thaw cycles.

Images



Western Blotting

Image 1. WB Suggested Anti-DHX30 Antibody Titration: 0.2-1 ug/ml ELISA Titer: 1:312500 Positive Control: MCF7 cell lysate



Immunohistochemistry

Image 2. Rabbit Anti-DHX30 Antibody Formalin Fixed Paraffin Embedded Tissue: Human Adult heart Observed Staining: Cytoplasmic Primary Antibody Concentration: 1:100 Secondary Antibody: Donkey anti-Rabbit-Cy2/3 Secondary Antibody Concentration: 1:200 Magnification: 20X Exposure Time: 0.5 – 2.0 sec Protocol located in Reviews and Data.