

Datasheet for ABIN2775238  
**anti-HELLS antibody (Middle Region)**[Go to Product page](#)

## 2 Images

## Overview

Quantity:	100 µL
Target:	HELLS
Binding Specificity:	Middle Region
Reactivity:	Human, Mouse, Rat, Rabbit, Horse, Dog, Guinea Pig, Cow
Host:	Rabbit
Clonality:	Polyclonal
Conjugate:	This HELLS antibody is un-conjugated
Application:	Western Blotting (WB)

## Product Details

Immunogen:	The immunogen is a synthetic peptide directed towards the middle region of human HELLS
Sequence:	QSGNLNSKNF LDPKELMELL KSRDYEREIK GSREKVISDK DLELLLD RSD
Predicted Reactivity:	Cow: 93%, Dog: 93%, Guinea Pig: 93%, Horse: 93%, Human: 100%, Mouse: 93%, Rabbit: 86%, Rat: 93%
Characteristics:	This is a rabbit polyclonal antibody against HELLS. It was validated on Western Blot using a cell lysate as a positive control.
Purification:	Affinity Purified

## Target Details

Target:	HELLS
---------	-------

## Target Details

Alternative Name:	HELLS ( <a href="#">HELLS Products</a> )
Background:	<p>HELLS is a lymphoid-specific helicase. Other helicases function in processes involving DNA strand separation, including replication, repair, recombination, and transcription. This protein is thought to be involved with cellular proliferation and may play a role in leukemogenesis. This gene encodes a lymphoid-specific helicase. Other helicases function in processes involving DNA strand separation, including replication, repair, recombination, and transcription. This protein is thought to be involved with cellular proliferation and may play a role in leukemogenesis. Alternatively spliced transcript variants have been described, but their biological validity has not been determined.</p> <p>Alias Symbols: FLJ10339, LSH, Nbla10143, PASG, SMARCA6</p> <p>Protein Interaction Partner: UBC, VCP, APP, SUMO2, E2F3, SMARCA1, MYC, HDAC2, HDAC1, DNMT3B, DNMT1, RPAP2, RPAP3,</p> <p>Protein Size: 838</p>
Molecular Weight:	92 kDa
Gene ID:	3070
NCBI Accession:	<a href="#">NM_018063</a> , <a href="#">NP_060533</a>
UniProt:	<a href="#">Q9NRZ9</a>
Pathways:	<a href="#">Chromatin Binding</a>

## Application Details

Application Notes:	Optimal working dilutions should be determined experimentally by the investigator.
Comment:	Antigen size: 838 AA
Restrictions:	For Research Use only

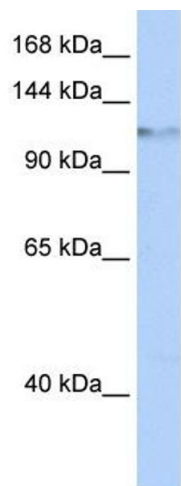
## Handling

Format:	Liquid
Concentration:	Lot specific
Buffer:	Liquid. Purified antibody supplied in 1x PBS buffer with 0.09 % (w/v) sodium azide and 2 % sucrose.
Preservative:	Sodium azide
Precaution of Use:	This product contains Sodium azide: a POISONOUS AND HAZARDOUS SUBSTANCE which

Handling

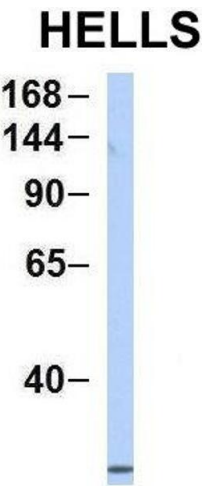
	should be handled by trained staff only.
Handling Advice:	Avoid repeated freeze-thaw cycles.
Storage:	-20 °C
Storage Comment:	For short term use, store at 2-8°C up to 1 week. For long term storage, store at -20°C in small aliquots to prevent freeze-thaw cycles.

Images



**Western Blotting**

**Image 1.** WB Suggested Anti-HELLS Antibody Titration: 0.2-1 ug/ml ELISA Titer: 1:1562500 Positive Control: HepG2 cell lysate HELLS is supported by BioGPS gene expression data to be expressed in HepG2



**Western Blotting**

**Image 2.** Host: Rabbit Target Name: HELLS Sample Type: MCF7 Antibody Dilution: 1.0ug/ml HELLS is supported by BioGPS gene expression data to be expressed in MCF7