

Datasheet for ABIN2775264
anti-DHX30 antibody (N-Term)[Go to Product page](#)

4 Images

Overview

Quantity:	100 µL
Target:	DHX30
Binding Specificity:	N-Term
Reactivity:	Human, Mouse, Cow, Dog, Rabbit, Pig
Host:	Rabbit
Clonality:	Polyclonal
Conjugate:	This DHX30 antibody is un-conjugated
Application:	Western Blotting (WB), Immunohistochemistry (IHC)

Product Details

Immunogen:	The immunogen is a synthetic peptide directed towards the N terminal region of human DHX30
Sequence:	AESGMAPGGP GEGDGSLVNA SRDLLKEFPQ PKNLLNSVIG RALGISHAKD
Predicted Reactivity:	Cow: 93%, Dog: 93%, Human: 100%, Mouse: 93%, Pig: 93%, Rabbit: 93%
Characteristics:	This is a rabbit polyclonal antibody against DHX30. It was validated on Western Blot using a cell lysate as a positive control.
Purification:	Affinity Purified

Target Details

Target:	DHX30
Alternative Name:	DHX30 (DHX30 Products)

Target Details

Background:	<p>DEAD box proteins, characterized by the conserved motif Asp-Glu-Ala-Asp (DEAD), are putative RNA helicases. They are implicated in a number of cellular processes involving alteration of RNA secondary structure such as translation initiation, nuclear and mitochondrial splicing, and ribosome and spliceosome assembly. Based on their distribution patterns, some members of this DEAD box protein family are believed to be involved in embryogenesis, spermatogenesis, and cellular growth and division. DHX30 is a member of this family. DEAD box proteins, characterized by the conserved motif Asp-Glu-Ala-Asp (DEAD), are putative RNA helicases. They are implicated in a number of cellular processes involving alteration of RNA secondary structure such as translation initiation, nuclear and mitochondrial splicing, and ribosome and spliceosome assembly. Based on their distribution patterns, some members of this DEAD box protein family are believed to be involved in embryogenesis, spermatogenesis, and cellular growth and division. This gene encodes a member of this family. The encoded protein has 97 % sequence identity with the mouse HELG protein. Alternative splicing of this gene generates 3 transcript variants.</p> <p>Alias Symbols: DDX30, FLJ11214, KIAA0890, RETCOR</p> <p>Protein Interaction Partner: SUMO2, SUMO3, IVNS1ABP, STAU1, GRSF1, UBC, SUMO1, NEDD8, Fbxl16, WWOX, SUZ12, RNF2, EZH2, NEDD4, TARDBP, HNRNPD, EIF2AK2, SKIL, FN1, ESR1, NDUFA2, ILF3, GNAI2, RAB31, GRK5, CAND1, COPS5, CUL1, CUL3, CUL4B, CUL5, SIRT7, HNRNPA1, HDGF, DHX58, OAS3, Sgol2, Y</p> <p>Protein Size: 361</p>
Molecular Weight:	40 kDa
Gene ID:	22907
NCBI Accession:	NM_138614 , NP_619519
Pathways:	Chromatin Binding

Application Details

Application Notes:	Optimal working dilutions should be determined experimentally by the investigator.
Comment:	Antigen size: 361 AA
Restrictions:	For Research Use only

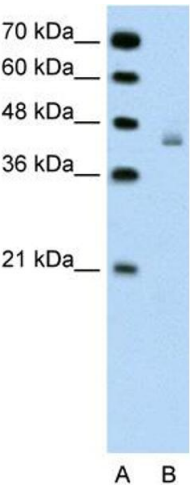
Handling

Format:	Liquid
---------	--------

Handling

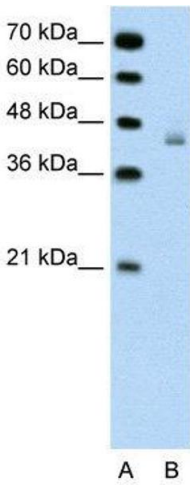
Concentration:	Lot specific
Buffer:	Liquid. Purified antibody supplied in 1x PBS buffer with 0.09 % (w/v) sodium azide and 2 % sucrose.
Preservative:	Sodium azide
Precaution of Use:	This product contains Sodium azide: a POISONOUS AND HAZARDOUS SUBSTANCE which should be handled by trained staff only.
Handling Advice:	Avoid repeated freeze-thaw cycles.
Storage:	-20 °C
Storage Comment:	For short term use, store at 2-8°C up to 1 week. For long term storage, store at -20°C in small aliquots to prevent freeze-thaw cycles.

Images



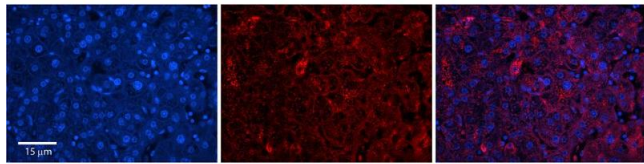
Western Blotting

Image 1. WB Suggested Anti-DHX30 Antibody Titration: 0.2-1 ug/ml Positive Control: Jurkat cell lysate DHX30 is strongly supported by BioGPS gene expression data to be expressed in Human Jurkat cells



Western Blotting

Image 2. WB Suggested Anti-DHX30 Antibody Titration: 0.2-1 µg/mL Positive Control: Jurkat cell lysate DHX30 is strongly supported by BioGPS gene expression data to be expressed in Human Jurkat cells



Immunohistochemistry

Image 3. Rabbit Anti-DHX30 Antibody Formalin Fixed Paraffin Embedded Tissue: Human Adult Liver Observed Staining: Cytoplasm in hepatocytes, moderate signal, wide tissue distribution Primary Antibody Concentration: 1:100 Secondary Antibody: Donkey anti-Rabbit-Cy3 Secondary Antibody Concentration: 1:200 Magnification: 20X Exposure Time: 0.5 – 2.0 sec Protocol located in Reviews and Data.

Please check the [product details page](#) for more images. Overall 4 images are available for ABIN2775264.