

Datasheet for ABIN2775269  
**anti-RIOK3 antibody (C-Term)**[Go to Product page](#)

3 Images

1 Publication

## Overview

Quantity:	100 µL
Target:	RIOK3
Binding Specificity:	C-Term
Reactivity:	Human, Mouse, Rat, Cow, Rabbit, Zebrafish (Danio rerio), Guinea Pig, Horse, Dog
Host:	Rabbit
Clonality:	Polyclonal
Conjugate:	This RIOK3 antibody is un-conjugated
Application:	Western Blotting (WB)

## Product Details

Immunogen:	The immunogen is a synthetic peptide directed towards the C terminal region of human RIOK3
Sequence:	HGLEFLFRDC RNVSQFFQKG GVKEALSERE LFNAVSGGLNI TADNEADFLA
Predicted Reactivity:	Cow: 100%, Dog: 100%, Guinea Pig: 100%, Horse: 100%, Human: 100%, Mouse: 100%, Rabbit: 100%, Rat: 100%, Zebrafish: 77%
Characteristics:	This is a rabbit polyclonal antibody against RIOK3. It was validated on Western Blot using a cell lysate as a positive control.
Purification:	Affinity Purified

## Target Details

Target:	RIOK3
---------	-------

## Target Details

Alternative Name:	RIOK3 ( <a href="#">RIOK3 Products</a> )
Background:	<p>RIOK3 was identified by the similarity to the Aspergillus nidulans SUDD protein, an extragenic suppressor of the heat-sensitive bimD6 mutation that fails to attach properly to the spindle microtubules at a restrictive temperature. The specific function of RIOK3 has not yet been determined. This gene was identified by the similarity of its product to the Aspergillus nidulans SUDD protein, an extragenic suppressor of the heat-sensitive bimD6 mutation that fails to attach properly to the spindle microtubules at a restrictive temperature. The specific function of this gene has not yet been determined.</p> <p>Alias Symbols: DKFZp779L1370, SUDD</p> <p>Protein Interaction Partner: UBC, FBXO25, CREB3L3, BCL2L11, PAK2, CDC42, CASP10, ELAVL1, RUVBL2, SSR4, PSMC4, PSMB1, MAGEA6, FBL, CALM3,</p> <p>Protein Size: 519</p>
Molecular Weight:	59 kDa
Gene ID:	8780
NCBI Accession:	<a href="#">NM_003831</a> , <a href="#">NP_003822</a>
UniProt:	<a href="#">O14730</a>

## Application Details

Application Notes:	Optimal working dilutions should be determined experimentally by the investigator.
Comment:	Antigen size: 519 AA
Restrictions:	For Research Use only

## Handling

Format:	Liquid
Concentration:	Lot specific
Buffer:	Liquid. Purified antibody supplied in 1x PBS buffer with 0.09 % (w/v) sodium azide and 2 % sucrose.
Preservative:	Sodium azide
Precaution of Use:	This product contains Sodium azide: a POISONOUS AND HAZARDOUS SUBSTANCE which should be handled by trained staff only.
Handling Advice:	Avoid repeated freeze-thaw cycles.

## Handling

Storage:	-20 °C
Storage Comment:	For short term use, store at 2-8°C up to 1 week. For long term storage, store at -20°C in small aliquots to prevent freeze-thaw cycles.

## Publications

Product cited in:	Storrs, Silverstein: "PATJ, a tight junction-associated PDZ protein, is a novel degradation target of high-risk human papillomavirus E6 and the alternatively spliced isoform 18 E6." in: <b>Journal of virology</b> , Vol. 81, Issue 8, pp. 4080-90, (2007) ( <a href="#">PubMed</a> ).
-------------------	--

## Images



### Western Blotting

**Image 1.** WB Suggested Anti-RIOK3

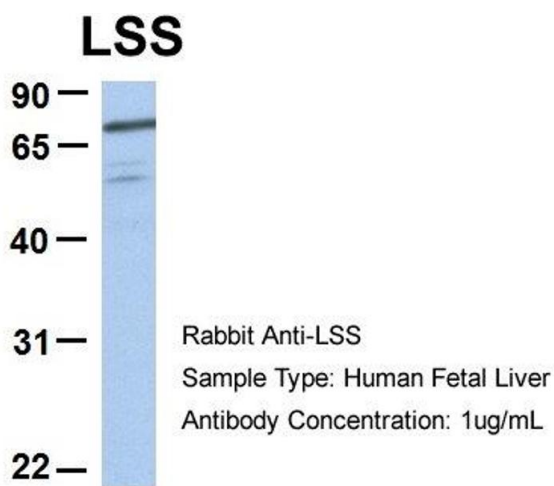
Antibody Titration: 0.2-1 µg/mL

Positive Control: 21\_B cell lysate

RIOK3 is strongly supported by BioGPS gene expression data to be expressed in Human 721\_B cells

### Western Blotting

**Image 2.** WB Suggested Anti-RIOK3 Antibody Titration: 0.2-1 ug/ml Positive Control: 721\_B cell lysate RIOK3 is strongly supported by BioGPS gene expression data to be expressed in Human 721\_B cells



**Western Blotting**

**Image 3.** Host: Rabbit Target Name: RIOK3 Sample Type:  
Human Fetal Heart Antibody Dilution: 1.0ug/ml