

Datasheet for ABIN2775271
anti-CES2 antibody (C-Term)[Go to Product page](#)

5 Images

1 Publication

Overview

Quantity:	100 µL
Target:	CES2
Binding Specificity:	C-Term
Reactivity:	Human, Mouse, Rat, Dog, Guinea Pig
Host:	Rabbit
Clonality:	Polyclonal
Conjugate:	This CES2 antibody is un-conjugated
Application:	Western Blotting (WB), Immunohistochemistry (IHC)

Product Details

Immunogen:	The immunogen is a synthetic peptide directed towards the C terminal region of human CES2
Sequence:	HWPLFDQEEQ YLQLNLQPAV GRALKAHRLQ FWKKALPQKI QELEEPEERH
Predicted Reactivity:	Dog: 83%, Guinea Pig: 83%, Human: 100%, Mouse: 83%, Rat: 83%
Characteristics:	This is a rabbit polyclonal antibody against CES2. It was validated on Western Blot using a cell lysate as a positive control.
Purification:	Affinity Purified

Target Details

Target:	CES2
Alternative Name:	CES2 (CES2 Products)

Target Details

Background:	<p>Carboxylesterase 2 is a member of a large multigene family. The enzymes are responsible for the hydrolysis of ester- and amide-bond-containing drugs such as cocaine and heroin. They also hydrolyze long-chain fatty acid esters and thioesters. The specific function of this enzyme has not yet been determined, however, it is speculated that carboxylesterases may play a role in lipid metabolism and/or the blood-brain barrier system.</p> <p>Carboxylesterase 2 is a member of a large multigene family. The enzymes encoded by these genes are responsible for the hydrolysis of ester- and amide-bond-containing drugs such as cocaine and heroin. They also hydrolyze long-chain fatty acid esters and thioesters. The specific function of this enzyme has not yet been determined, however, it is speculated that carboxylesterases may play a role in lipid metabolism and/or the blood-brain barrier system. Two alternatively spliced transcript variants encoding distinct isoforms have been found for this gene.</p> <p>Alias Symbols: CE-2, iCE, PCE-2, CES2A1</p> <p>Protein Size: 623</p>
-------------	--

Molecular Weight:	69 kDa
-------------------	--------

Gene ID:	8824
----------	------

NCBI Accession:	NM_003869 , NP_003860
-----------------	---

UniProt:	O00748
----------	------------------------

Application Details

Application Notes:	Optimal working dilutions should be determined experimentally by the investigator.
--------------------	--

Comment:	Antigen size: 623 AA
----------	----------------------

Restrictions:	For Research Use only
---------------	-----------------------

Handling

Format:	Liquid
---------	--------

Concentration:	Lot specific
----------------	--------------

Buffer:	Liquid. Purified antibody supplied in 1x PBS buffer with 0.09 % (w/v) sodium azide and 2 % sucrose.
---------	---

Preservative:	Sodium azide
---------------	--------------

Precaution of Use:	This product contains Sodium azide: a POISONOUS AND HAZARDOUS SUBSTANCE which should be handled by trained staff only.
--------------------	--

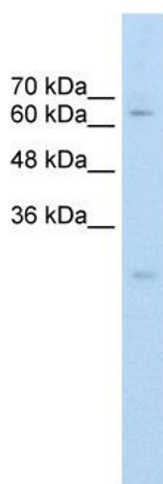
Handling

Handling Advice:	Avoid repeated freeze-thaw cycles.
Storage:	-20 °C
Storage Comment:	For short term use, store at 2-8°C up to 1 week. For long term storage, store at -20°C in small aliquots to prevent freeze-thaw cycles.

Publications

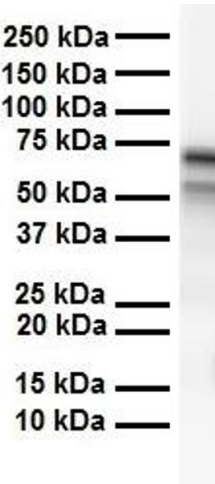
Product cited in:	Majumder, Cash, Fisk: "Non-Overlapping Distributions and Functions of the VDAC Family in Ciliogenesis." in: Cells , Vol. 4, Issue 3, pp. 331-53, (2015) (PubMed).
	Majumder, Fisk: "VDAC3 and Mps1 negatively regulate ciliogenesis." in: Cell cycle (Georgetown, Tex.) , Vol. 12, Issue 5, pp. 849-58, (2013) (PubMed).
	Majumder, Slabodnick, Pike, Marquardt, Fisk: "VDAC3 regulates centriole assembly by targeting Mps1 to centrosomes." in: Cell cycle (Georgetown, Tex.) , Vol. 11, Issue 19, pp. 3666-78, (2012) (PubMed).

Images



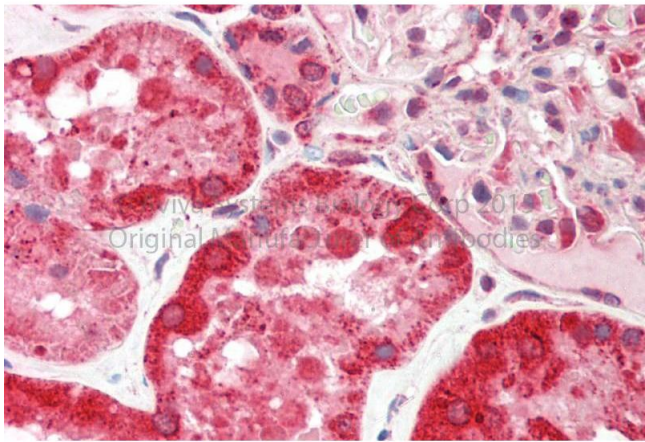
Western Blotting

Image 1. WB Suggested Anti-CES2 Antibody Titration: 0.2-1 ug/ml Positive Control: HepG2 cell lysate CES2 is strongly supported by BioGPS gene expression data to be expressed in Human HepG2 cells



Western Blotting

Image 2. WB Suggested Anti-CES2 antibody Titration: 1 ug/mL Sample Type: Human heart



Immunohistochemistry

Image 3. Rabbit Anti-CES2 antibody Formalin Fixed Paraffin Embedded Tissue: Human Adult Kidney Observed Staining: Cytoplasm in hepatocytes Primary Antibody Concentration: 1:600 Secondary Antibody: Donkey anti-Rabbit-Cy3 Secondary Antibody Concentration: 1:200 Magnification: 20X Exposure Time: 0.5 – 2.0 sec

Please check the [product details page](#) for more images. Overall 5 images are available for ABIN2775271.