

Datasheet for ABIN2775283  
**anti-MYBPC2 antibody (N-Term)**[Go to Product page](#)

## 1 Image

## Overview

Quantity:	100 µL
Target:	MYBPC2
Binding Specificity:	N-Term
Reactivity:	Human, Mouse, Rat, Cow, Dog, Guinea Pig, Horse
Host:	Rabbit
Clonality:	Polyclonal
Conjugate:	This MYBPC2 antibody is un-conjugated
Application:	Western Blotting (WB)

## Product Details

Immunogen:	The immunogen is a synthetic peptide directed towards the N terminal region of human MYBPC2
Sequence:	KEAPPEDQSP TAEPTGVFL KKPDSVSVET GKDAVVVAKV NGKELPDKPT
Predicted Reactivity:	Cow: 100%, Dog: 100%, Guinea Pig: 100%, Horse: 85%, Human: 100%, Mouse: 100%, Rat: 93%
Characteristics:	This is a rabbit polyclonal antibody against MYBPC2. It was validated on Western Blot using a cell lysate as a positive control.
Purification:	Affinity Purified

## Target Details

Target:	MYBPC2
---------	--------

## Target Details

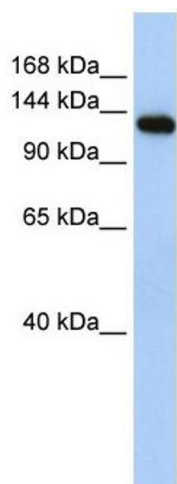
Alternative Name:	MYBPC2 ( <a href="#">MYBPC2 Products</a> )
Background:	The function of MYBPC2 remains unknown. Alias Symbols: MGC163408, MYBPC, MYBPCF Protein Interaction Partner: MYBPH, Protein Size: 1141
Molecular Weight:	128 kDa
Gene ID:	4606
NCBI Accession:	<a href="#">NM_004533</a> , <a href="#">NP_004524</a>
UniProt:	<a href="#">A1L4G9</a>

## Application Details

Application Notes:	Optimal working dilutions should be determined experimentally by the investigator.
Comment:	Antigen size: 1141 AA
Restrictions:	For Research Use only

## Handling

Format:	Liquid
Concentration:	Lot specific
Buffer:	Liquid. Purified antibody supplied in 1x PBS buffer with 0.09 % (w/v) sodium azide and 2 % sucrose.
Preservative:	Sodium azide
Precaution of Use:	This product contains Sodium azide: a POISONOUS AND HAZARDOUS SUBSTANCE which should be handled by trained staff only.
Handling Advice:	Avoid repeated freeze-thaw cycles.
Storage:	-20 °C
Storage Comment:	For short term use, store at 2-8°C up to 1 week. For long term storage, store at -20°C in small aliquots to prevent freeze-thaw cycles.



Western Blotting

**Image 1.** WB Suggested Anti-MYBPC2 Antibody Titration:  
0.2-1 ug/ml ELISA Titer: 1:62500 Positive Control: Human  
Muscle