

Datasheet for ABIN2775285
anti-ITGBL1 antibody (N-Term)[Go to Product page](#)

1 Image

Overview

Quantity:	100 µL
Target:	ITGBL1
Binding Specificity:	N-Term
Reactivity:	Human, Dog, Mouse, Rat, Guinea Pig, Horse, Pig, Cow, Rabbit
Host:	Rabbit
Clonality:	Polyclonal
Conjugate:	This ITGBL1 antibody is un-conjugated
Application:	Western Blotting (WB)

Product Details

Immunogen:	The immunogen is a synthetic peptide directed towards the N terminal region of human ITGBL1
Sequence:	CSNAGTCHCG RCKCDNSDGS GLVYGKFCEC DDRECIDDET EEICGGHGKC
Predicted Reactivity:	Cow: 93%, Dog: 86%, Guinea Pig: 86%, Horse: 93%, Human: 100%, Mouse: 86%, Pig: 93%, Rabbit: 93%, Rat: 86%
Characteristics:	This is a rabbit polyclonal antibody against ITGBL1. It was validated on Western Blot using a cell lysate as a positive control.
Purification:	Protein A purified

Target Details

Target:	ITGBL1
---------	--------

Target Details

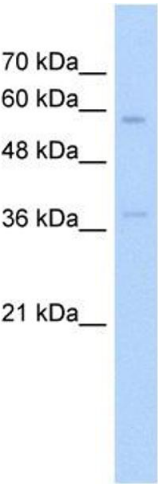
Alternative Name:	ITGBL1 (ITGBL1 Products)
Background:	ITGBL1 may be linked in some way with the evolution of the integrin beta subunits. Alias Symbols: OSCP, TIED Protein Size: 494
Molecular Weight:	54 kDa
Gene ID:	9358
NCBI Accession:	NM_004791 , NP_004782
UniProt:	O95965

Application Details

Application Notes:	Optimal working dilutions should be determined experimentally by the investigator.
Comment:	Antigen size: 494 AA
Restrictions:	For Research Use only

Handling

Format:	Liquid
Concentration:	Lot specific
Buffer:	Liquid. Purified antibody supplied in 1x PBS buffer with 0.09 % (w/v) sodium azide and 2 % sucrose.
Preservative:	Sodium azide
Precaution of Use:	This product contains Sodium azide: a POISONOUS AND HAZARDOUS SUBSTANCE which should be handled by trained staff only.
Handling Advice:	Avoid repeated freeze-thaw cycles.
Storage:	-20 °C
Storage Comment:	For short term use, store at 2-8°C up to 1 week. For long term storage, store at -20°C in small aliquots to prevent freeze-thaw cycles.



Western Blotting

Image 1. WB Suggested Anti-ITGBL1 Antibody Titration:
5.0ug/ml Positive Control: HepG2 cell lysate