

Datasheet for ABIN2775292

**anti-IGFALS antibody (Middle Region)**[Go to Product page](#)**1** Image

## Overview

Quantity:	100 µL
Target:	IGFALS
Binding Specificity:	Middle Region
Reactivity:	Human, Mouse, Rat, Guinea Pig, Cow, Dog
Host:	Rabbit
Clonality:	Polyclonal
Conjugate:	This IGFALS antibody is un-conjugated
Application:	Western Blotting (WB)

## Product Details

Immunogen:	The immunogen is a synthetic peptide directed towards the middle region of human IGFALS
Sequence:	PGLLGRLRVLR LSHNAIASLR PRTFKDLHFL EELQLGHNRI RQLAERSFEG
Predicted Reactivity:	Cow: 92%, Dog: 92%, Guinea Pig: 92%, Human: 100%, Mouse: 100%, Rat: 100%
Characteristics:	This is a rabbit polyclonal antibody against IGFALS. It was validated on Western Blot using a cell lysate as a positive control.
Purification:	Affinity Purified

## Target Details

Target:	IGFALS
Alternative Name:	IGFALS ( <a href="#">IGFALS Products</a> )

## Target Details

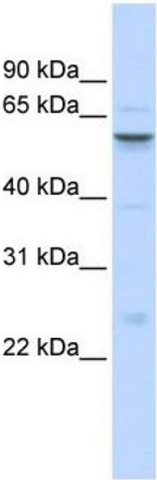
Background:	<p>IGFALS is a serum protein that binds insulin-like growth factors, increasing their half-life and their vascular localization. Production of the encoded protein, which contains twenty leucine-rich repeats, is stimulated by growth hormone. Defects in IGFALS are a cause of acid-labile subunit deficiency, which manifests itself in a delayed and slow puberty.</p> <p>Alias Symbols: ALS</p> <p>Protein Interaction Partner: PDCD6, IGF1, IGFBP5, IGFBP3,</p> <p>Protein Size: 605</p>
Molecular Weight:	63 kDa
Gene ID:	3483
NCBI Accession:	<a href="#">NM_004970</a> , <a href="#">NP_004961</a>
UniProt:	<a href="#">P35858</a>

## Application Details

Application Notes:	Optimal working dilutions should be determined experimentally by the investigator.
Comment:	Antigen size: 605 AA
Restrictions:	For Research Use only

## Handling

Format:	Liquid
Concentration:	Lot specific
Buffer:	Liquid. Purified antibody supplied in 1x PBS buffer with 0.09 % (w/v) sodium azide and 2 % sucrose.
Preservative:	Sodium azide
Precaution of Use:	This product contains Sodium azide: a POISONOUS AND HAZARDOUS SUBSTANCE which should be handled by trained staff only.
Handling Advice:	Avoid repeated freeze-thaw cycles.
Storage:	-20 °C
Storage Comment:	For short term use, store at 2-8°C up to 1 week. For long term storage, store at -20°C in small aliquots to prevent freeze-thaw cycles.



Western Blotting

**Image 1.** WB Suggested Anti-IGFALS Antibody Titration: 0.2-1 ug/ml ELISA Titer: 1:312500 Positive Control: Human brain