

Datasheet for ABIN2775298
anti-GFPT2 antibody (Middle Region)

3 Images

[Go to Product page](#)

Overview

Quantity:	100 µL
Target:	GFPT2
Binding Specificity:	Middle Region
Reactivity:	Human, Mouse, Rat, Cow, Guinea Pig, Horse, Rabbit, Dog
Host:	Rabbit
Clonality:	Polyclonal
Conjugate:	This GFPT2 antibody is un-conjugated
Application:	Western Blotting (WB)

Product Details

Immunogen:	The immunogen is a synthetic peptide directed towards the middle region of human GFPT2
Sequence:	TARQGRPIIL CSKDDTESSK FAYKTIELPH TVDCLQGILS VIPLQLLSFH
Predicted Reactivity:	Cow: 100%, Dog: 93%, Guinea Pig: 100%, Horse: 100%, Human: 100%, Mouse: 100%, Rabbit: 93%, Rat: 100%
Characteristics:	This is a rabbit polyclonal antibody against GFPT2. It was validated on Western Blot using a cell lysate as a positive control.
Purification:	Affinity Purified

Target Details

Target:	GFPT2
---------	-------

Target Details

Alternative Name:	GFPT2 (GFPT2 Products)
Background:	<p>GFPT2 controls the flux of glucose into the hexosamine pathway. GFPT2 is most likely involved in regulating the availability of precursors for N- and O-linked glycosylation of proteins.</p> <p>Alias Symbols: FLJ10380, GFAT2</p> <p>Protein Interaction Partner: UBC, DCP2, CUL3, POT1,</p> <p>Protein Size: 682</p>
Molecular Weight:	77 kDa
Gene ID:	9945
NCBI Accession:	NM_005110 , NP_005101
UniProt:	O94808

Application Details

Application Notes:	Optimal working dilutions should be determined experimentally by the investigator.
Comment:	Antigen size: 682 AA
Restrictions:	For Research Use only

Handling

Format:	Liquid
Concentration:	Lot specific
Buffer:	Liquid. Purified antibody supplied in 1x PBS buffer with 0.09 % (w/v) sodium azide and 2 % sucrose.
Preservative:	Sodium azide
Precaution of Use:	This product contains Sodium azide: a POISONOUS AND HAZARDOUS SUBSTANCE which should be handled by trained staff only.
Handling Advice:	Avoid repeated freeze-thaw cycles.
Storage:	-20 °C
Storage Comment:	For short term use, store at 2-8°C up to 1 week. For long term storage, store at -20°C in small aliquots to prevent freeze-thaw cycles.

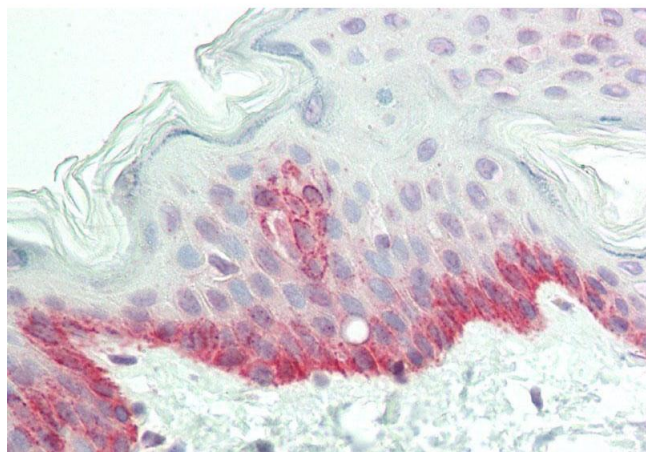


Western Blotting

Image 1. WB Suggested Anti-GFPT2 Antibody Titration: 0.2-1 ug/ml ELISA Titer: 1:312500 Positive Control: HT1080 cell lysate GFPT2 is supported by BioGPS gene expression data to be expressed in HT1080

Western Blotting

Image 2. WB Suggested Anti-GFPT2 Antibody Titration: 0.2-1 µg/mL ELISA Titer: 1:12500 Positive Control: HT1080 cell lysate GFPT2 is supported by BioGPS gene expression data to be expressed in HT1080



Immunohistochemistry

Image 3. Rabbit Anti-GFPT2 antibody Formalin Fixed Paraffin Embedded Tissue: Human Skin Primary antibody Concentration: 1:100 Secondary Antibody: Donkey anti-Rabbit-Cy3 Secondary Antibody Concentration: 1:200 Magnification: 20x Exposure Time: 0.5-2.0sec