

Datasheet for ABIN2775304  
**anti-GEM antibody (C-Term)**[Go to Product page](#)

## 4 Images

## Overview

|                      |  |
|----------------------|--|
| Quantity:            | 100 µL   |
| Target:              | GEM  |
| Binding Specificity: | C-Term   |
| Reactivity:          | Human, Mouse, Rat, Dog, Cow, Guinea Pig, Horse, Rabbit |
| Host:                | Rabbit   |
| Clonality:           | Polyclonal   |
| Conjugate:           | This GEM antibody is un-conjugated                     |
| Application:         | Western Blotting (WB), Immunohistochemistry (IHC)      |

## Product Details

|                       |  |
|-----------------------|--|
| Immunogen:            | The immunogen is a synthetic peptide directed towards the C terminal region of human GEM                     |
| Sequence:             | ETSAAVQHNV KELFEGIVRQ VRLRRDSKEK NERRLAYQKR KESMPRKARR FW  |
| Predicted Reactivity: | Cow: 100%, Dog: 100%, Guinea Pig: 100%, Horse: 100%, Human: 100%, Mouse: 100%, Rabbit: 100%, Rat: 100%       |
| Characteristics:      | This is a rabbit polyclonal antibody against GEM. It was validated on Western Blot and immunohistochemistry. |
| Purification:         | Protein A purified   |

## Target Details

|         |     |
|---------|-----|
| Target: | GEM |
|---------|-----|

## Target Details

|                   |  |
|-------------------|--|
| Alternative Name: | GEM ( <a href="#">GEM Products</a> )   |
| Background:       | <p>GEM belongs to the RAD/GEM family of GTP-binding proteins. It is associated with the inner face of the plasma membrane and could play a role as a regulatory protein in receptor-mediated signal transduction. The protein encoded by this gene belongs to the RAD/GEM family of GTP-binding proteins. It is associated with the inner face of the plasma membrane and could play a role as a regulatory protein in receptor-mediated signal transduction. Alternative splicing occurs at this locus and two transcript variants encoding the same protein have been identified.</p> <p>Alias Symbols: KIR, MGC26294</p> <p>Protein Interaction Partner: NOTCH2NL, KRTAP10-3, KRTAP10-7, INO80E, CCDC67, KLC3, KRT40, SSX2IP, LZTS2, COG8, CCDC102B, TRIM54, KCTD9, TFIP11, IKZF3, RUNDC3A, AHCYL1, PNMA1, BLZF1, TRAF1, TCF4, TRIM27, KRT31, GOLGA2, TRIM23, CLDN15, CLEC4G, YBEY, NDUFAF3, RNF7, VTN, SDHB, NDUFS8, CT</p> <p>Protein Size: 296</p> |
| Molecular Weight: | 33 kDa   |
| Gene ID:          | 2669   |
| NCBI Accession:   | <a href="#">NM_005261</a> , <a href="#">NP_005252</a>  |
| UniProt:          | <a href="#">P55040</a>   |

## Application Details

|                    |  |
|--------------------|--|
| Application Notes: | Optimal working dilutions should be determined experimentally by the investigator. |
| Comment:           | Antigen size: 296 AA   |
| Restrictions:      | For Research Use only  |

## Handling

|                    |  |
|--------------------|--|
| Format:            | Liquid   |
| Concentration:     | Lot specific   |
| Buffer:            | Liquid. Purified antibody supplied in 1x PBS buffer with 0.09 % (w/v) sodium azide and 2 % sucrose.                    |
| Preservative:      | Sodium azide   |
| Precaution of Use: | This product contains Sodium azide: a POISONOUS AND HAZARDOUS SUBSTANCE which should be handled by trained staff only. |

## Handling

Handling Advice: Avoid repeated freeze-thaw cycles.

Storage: -20 °C

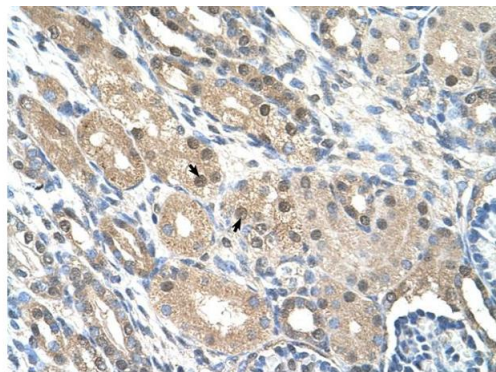
Storage Comment: For short term use, store at 2-8°C up to 1 week. For long term storage, store at -20°C in small aliquots to prevent freeze-thaw cycles.

## Images



### Western Blotting

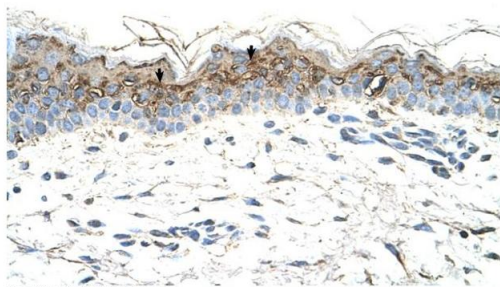
**Image 1.** WB Suggested Anti-GEM Antibody Titration:  
2.5ug/ml Positive Control: HepG2 cell lysate



Rabbit Anti-GEM Antibody  
Catalog Number: ARP42226  
Lot Number: QC12782  
Paraffin Embedded Tissue: Human Kidney  
Cells with Positive label: Epithelial cells of renal tubule (Indicated with Arrows)  
Antibody Concentration: 4.0-8.0 µg/ml  
Magnification: 400X

### Immunohistochemistry

**Image 2.** Rabbit Anti-GEM Antibody Paraffin Embedded  
Tissue: Human Kidney Cellular Data: Epithelial cells of renal  
tubule Antibody Concentration: 4.0-8.0 ug/ml Magnification:  
400X



Rabbit Anti-GEM Antibody  
Catalog Number: ARP42226  
Lot Number: QC12782  
Paraffin Embedded Tissue: Human Skin  
Cells with Positive label: Squamous epithelial cells (Indicated with Arrows)  
Antibody Concentration: 4.0-8.0 µg/ml  
Magnification: 400X

### Immunohistochemistry

**Image 3.** Rabbit Anti-GEM Antibody Paraffin Embedded  
Tissue: Human Skin Cellular Data: Squamous epithelial cells  
Antibody Concentration: 4.0-8.0 ug/ml Magnification: 400X

Please check the [product details page](#) for more images. Overall 4 images are available for ABIN2775304.