

Datasheet for ABIN2775305  
**anti-GPD1 antibody (N-Term)**

## 2 Images

[Go to Product page](#)

## Overview

Quantity:	100 µL
Target:	GPD1
Binding Specificity:	N-Term
Reactivity:	Human, Mouse, Rabbit, Rat, Dog, Guinea Pig, Horse, Cow, Zebrafish (Danio rerio)
Host:	Rabbit
Clonality:	Polyclonal
Conjugate:	This GPD1 antibody is un-conjugated
Application:	Western Blotting (WB), Immunohistochemistry (IHC)

## Product Details

Immunogen:	The immunogen is a synthetic peptide directed towards the N terminal region of human GPD1
Sequence:	KANATGISLI KGVDEGPNGI KLISEVIGER LGIPMSVLMG ANIASEVADE
Predicted Reactivity:	Cow: 93%, Dog: 86%, Guinea Pig: 100%, Horse: 100%, Human: 100%, Mouse: 100%, Rabbit: 93%, Rat: 93%, Zebrafish: 93%
Characteristics:	This is a rabbit polyclonal antibody against GPD1. It was validated on Western Blot using a cell lysate as a positive control.
Purification:	Affinity Purified

## Target Details

Target:	GPD1
---------	------

## Target Details

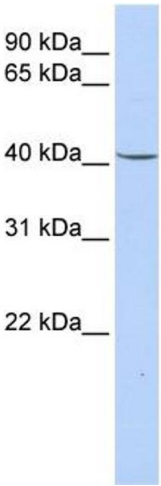
Alternative Name:	GPD1 ( <a href="#">GPD1 Products</a> )
Background:	<p>GPD1 belongs to the NAD-dependent glycerol-3-phosphate dehydrogenase family. The gene encoding GpD1 protein is a weight-loss-responsive gene in skeletal muscle. Its observed transcriptional modulation may decrease triglyceride synthesis, with weight loss.</p> <p>Alias Symbols: FLJ26652, HTGTI</p> <p>Protein Interaction Partner: GK, PTN, MDH1,</p> <p>Protein Size: 349</p>
Molecular Weight:	37 kDa
Gene ID:	2819
NCBI Accession:	<a href="#">NM_005276</a> , <a href="#">NP_005267</a>
UniProt:	<a href="#">P21695</a>

## Application Details

Application Notes:	Optimal working dilutions should be determined experimentally by the investigator.
Comment:	Antigen size: 349 AA
Restrictions:	For Research Use only

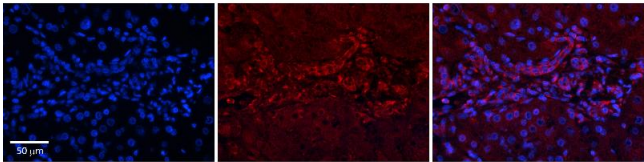
## Handling

Format:	Liquid
Concentration:	Lot specific
Buffer:	Liquid. Purified antibody supplied in 1x PBS buffer with 0.09 % (w/v) sodium azide and 2 % sucrose.
Preservative:	Sodium azide
Precaution of Use:	This product contains Sodium azide: a POISONOUS AND HAZARDOUS SUBSTANCE which should be handled by trained staff only.
Handling Advice:	Avoid repeated freeze-thaw cycles.
Storage:	-20 °C
Storage Comment:	For short term use, store at 2-8°C up to 1 week. For long term storage, store at -20°C in small aliquots to prevent freeze-thaw cycles.



### Western Blotting

**Image 1.** WB Suggested Anti-GPD1 Antibody Titration: 0.2-1 ug/ml ELISA Titer: 1:312500 Positive Control: Human Lung



### Immunohistochemistry

**Image 2.** Rabbit Anti-GPD1 Antibody Formalin Fixed Paraffin Embedded Tissue: Human Liver Tissue Observed Staining: Cytoplasm in bile ductule Primary Antibody Concentration: 1:100 Other Working Concentrations: N/A Secondary Antibody: Donkey anti-Rabbit-Cy3 Secondary Antibody Concentration: 1:200 Magnification: 20X Exposure Time: 0.5 - 2.0 sec