

Datasheet for ABIN2775307
anti-GPR6 antibody (N-Term)[Go to Product page](#)

2 Images

Overview

Quantity:	100 µL
Target:	GPR6
Binding Specificity:	N-Term
Reactivity:	Human, Mouse, Rat, Cow
Host:	Rabbit
Clonality:	Polyclonal
Conjugate:	This GPR6 antibody is un-conjugated
Application:	Western Blotting (WB), Immunohistochemistry (IHC)

Product Details

Immunogen:	The immunogen is a synthetic peptide directed towards the N terminal region of human GPR6
Sequence:	NASAASLND S QVWVAAEGA AAAATAAGGP DTGEWGPPAA AALGAGGGAN
Predicted Reactivity:	Cow: 86%, Human: 100%, Mouse: 93%, Rat: 93%
Characteristics:	This is a rabbit polyclonal antibody against GPR6. It was validated on Western Blot using a cell lysate as a positive control.
Purification:	Affinity Purified

Target Details

Target:	GPR6
Alternative Name:	GPR6 (GPR6 Products)

Target Details

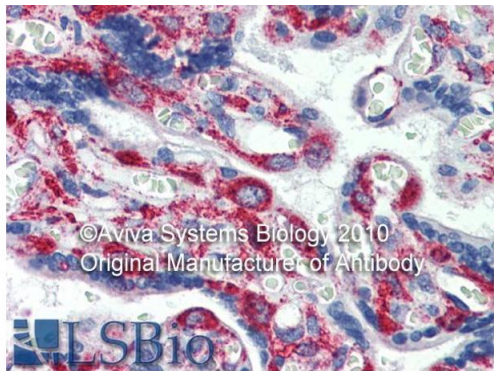
Background:	<p>GPR6 belongs to the G-protein coupled receptor 1 family. It is a receptor for the lysosphingolipid sphingosine 1-phosphate (S1P). S1P is a bioactive lysophospholipid that elicits diverse physiological effect on most types of cells and tissues. This receptor mediates its action by association with G proteins that activate a phosphatidylinositol-calcium second messenger system.</p> <p>Alias Symbols: -</p> <p>Protein Size: 362</p>
Molecular Weight:	38 kDa
Gene ID:	2830
NCBI Accession:	NM_005284 , NP_005275
UniProt:	P46095

Application Details

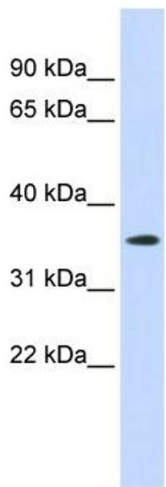
Application Notes:	Optimal working dilutions should be determined experimentally by the investigator.
Comment:	Antigen size: 362 AA
Restrictions:	For Research Use only

Handling

Format:	Liquid
Concentration:	Lot specific
Buffer:	Liquid. Purified antibody supplied in 1x PBS buffer with 0.09 % (w/v) sodium azide and 2 % sucrose.
Preservative:	Sodium azide
Precaution of Use:	This product contains Sodium azide: a POISONOUS AND HAZARDOUS SUBSTANCE which should be handled by trained staff only.
Handling Advice:	Avoid repeated freeze-thaw cycles.
Storage:	-20 °C
Storage Comment:	For short term use, store at 2-8°C up to 1 week. For long term storage, store at -20°C in small aliquots to prevent freeze-thaw cycles.



Rabbit Anti-GPR6 Antibody
Catalog Number: ARP42229
Lot Number: QC17667
Paraffin Embedded Tissue: Human Placenta
Antibody Concentration: 5.0 µg/ml
Data courtesy of Lifespan Biosciences, Inc.
Aviva Systems Biology is the original manufacturer of this antibody.



Immunohistochemistry

Image 1.

Western Blotting

Image 2. WB Suggested Anti-GPR6 Antibody Titration: 0.2-1 ug/ml ELISA Titer: 1:312500 Positive Control: Human Placenta