

Datasheet for ABIN2775316
anti-SLC1A5 antibody (Middle Region)

3 Images

3 Publications

[Go to Product page](#)

Overview

| | |
|----------------------|---|
| Quantity: | 100 µL |
| Target: | SLC1A5 |
| Binding Specificity: | Middle Region |
| Reactivity: | Human, Mouse, Rat, Dog, Cow, Horse, Pig, Sheep, Guinea Pig, Rabbit, Zebrafish (Danio rerio) |
| Host: | Rabbit |
| Clonality: | Polyclonal |
| Conjugate: | This SLC1A5 antibody is un-conjugated |
| Application: | Western Blotting (WB), Immunohistochemistry (IHC) |

Product Details

| | |
|-----------------------|--|
| Immunogen: | The immunogen is a synthetic peptide directed towards the middle region of human SLC1A5 |
| Sequence: | FGVALRKLGP EGELLIRFFN SFNEATMVLV SWIMWYAPVG IMFLVAGKIV |
| Predicted Reactivity: | Cow: 100%, Dog: 100%, Guinea Pig: 93%, Horse: 100%, Human: 100%, Mouse: 100%, Pig: 100%, Rabbit: 93%, Rat: 100%, Sheep: 100%, Zebrafish: 86% |
| Characteristics: | This is a rabbit polyclonal antibody against SLC1A5. It was validated on Western Blot and immunohistochemistry. |
| Purification: | Protein A purified |

Target Details

| | |
|---------|--------|
| Target: | SLC1A5 |
|---------|--------|

Target Details

| | |
|-------------------|--|
| Alternative Name: | SLC1A5 (SLC1A5 Products) |
| Background: | <p>SLC1A5 has a broad substrate specificity, a preference for zwitterionic amino acids, and a sodium-dependence. It accepts as substrates all neutral amino acids, including glutamine, asparagine, and branched-chain and aromatic amino acids, and excludes methylated amino acids, anionic amino acids, and cationic amino acids. It acts as a cell surface receptor for feline endogenous virus RD114, baboon M7 endogenous virus and type D simian retroviruses.</p> <p>Alias Symbols: AAAT, ASCT2, ATBO, FLJ31068, M7V1, M7VS1, R16, RDRC</p> <p>Protein Interaction Partner: UBC, FUS, LGR4, ADRB2, ALB, PAXIP1, ECT2, MCU, MRPS35, CYB5R3, CAND1, CUL3, USP50, USP19, TBC1D17, ERVW-1, NEK6, MPDU1, LGALS9,</p> <p>Protein Size: 541</p> |
| Molecular Weight: | 56 kDa |
| Gene ID: | 6510 |
| NCBI Accession: | NM_005628 , NP_005619 |
| UniProt: | Q71UA6 |
| Pathways: | Dicarboxylic Acid Transport , Warburg Effect |

Application Details

| | |
|--------------------|--|
| Application Notes: | Optimal working dilutions should be determined experimentally by the investigator. |
| Comment: | Antigen size: 541 AA |
| Restrictions: | For Research Use only |

Handling

| | |
|--------------------|--|
| Format: | Liquid |
| Concentration: | Lot specific |
| Buffer: | Liquid. Purified antibody supplied in 1x PBS buffer with 0.09 % (w/v) sodium azide and 2 % sucrose. |
| Preservative: | Sodium azide |
| Precaution of Use: | This product contains Sodium azide: a POISONOUS AND HAZARDOUS SUBSTANCE which should be handled by trained staff only. |
| Handling Advice: | Avoid repeated freeze-thaw cycles. |

Handling

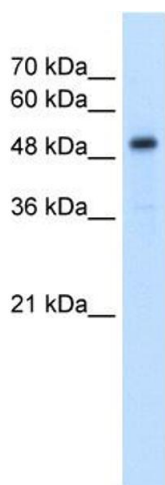
Storage: -20 °C

Storage Comment: For short term use, store at 2-8°C up to 1 week. For long term storage, store at -20°C in small aliquots to prevent freeze-thaw cycles.

Publications

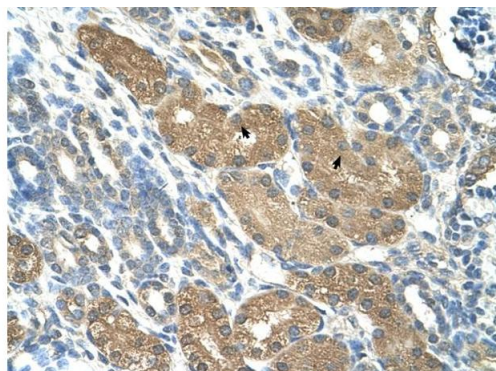
Product cited in: Storrs, Silverstein: "PATJ, a tight junction-associated PDZ protein, is a novel degradation target of high-risk human papillomavirus E6 and the alternatively spliced isoform 18 E6." in: **Journal of virology**, Vol. 81, Issue 8, pp. 4080-90, (2007) ([PubMed](#)).

Images



Western Blotting

Image 1. WB Suggested Anti-SLC1A5 Antibody Titration: 2.5ug/ml Positive Control: Jurkat cell lysate SLC1A5 is supported by BioGPS gene expression data to be expressed in Jurkat

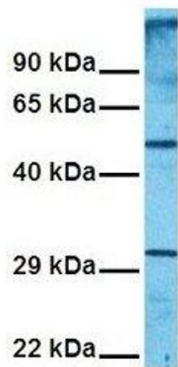


Rabbit Anti-SLC1A5 Antibody
Catalog Number: ARP42247
Lot Number: QC12797
Paraffin Embedded Tissue: Human Kidney
Cells with Positive label: Epithelial cells of renal tubule (Indicated with Arrows)
Antibody Concentration: 4.0-8.0 µg/ml
Magnification: 400X

Immunohistochemistry

Image 2. Rabbit Anti-SLC1A5 Antibody Paraffin Embedded Tissue: Human Kidney Cellular Data: Epithelial cells of renal tubule Antibody Concentration: 4.0-8.0 ug/ml Magnification: 400X

SLC1A5



Western Blotting

Image 3. Host: Rabbit Target Name: SLC1A5 Sample
Tissue: Human 293T Antibody Dilution: 1.0ug/ml