

Datasheet for ABIN2775317
anti-SLC6A8 antibody (N-Term)

3 Images

[Go to Product page](#)

Overview

Quantity:	100 µL
Target:	SLC6A8
Binding Specificity:	N-Term
Reactivity:	Human, Mouse, Rat, Dog, Rabbit, Cow, Guinea Pig, Horse
Host:	Rabbit
Clonality:	Polyclonal
Conjugate:	This SLC6A8 antibody is un-conjugated
Application:	Western Blotting (WB), Immunohistochemistry (IHC)

Product Details

Immunogen:	The immunogen is a synthetic peptide directed towards the N terminal region of human SLC6A8
Sequence:	CDQLADRRSP VIEFWENKVL RLSGGLEVPG ALNWEVTLCL LACWVLVYFC
Predicted Reactivity:	Cow: 100%, Dog: 100%, Guinea Pig: 100%, Horse: 100%, Human: 100%, Mouse: 100%, Rabbit: 93%, Rat: 100%
Characteristics:	This is a rabbit polyclonal antibody against SLC6A8. It was validated on Western Blot and immunohistochemistry.
Purification:	Protein A purified

Target Details

Target:	SLC6A8
---------	--------

Target Details

Alternative Name:	SLC6A8 (SLC6A8 Products)
Background:	SLC6A8 is required for the uptake of creatine in muscles and brain. Alias Symbols: CRTR, CT1, MGC87396, CRT Protein Interaction Partner: UBC, CD59, Protein Size: 635
Molecular Weight:	70 kDa
Gene ID:	6535
NCBI Accession:	NM_005629 , NP_005620
UniProt:	P48029
Pathways:	Retinoic Acid Receptor Signaling Pathway , Intracellular Steroid Hormone Receptor Signaling Pathway , Regulation of Intracellular Steroid Hormone Receptor Signaling , Nuclear Hormone Receptor Binding , ER-Nucleus Signaling , Unfolded Protein Response

Application Details

Application Notes:	Optimal working dilutions should be determined experimentally by the investigator.
Comment:	Antigen size: 635 AA
Restrictions:	For Research Use only

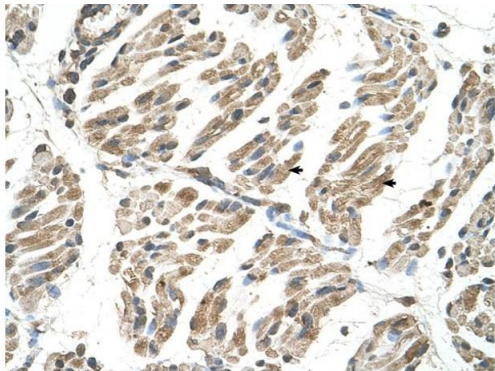
Handling

Format:	Liquid
Concentration:	Lot specific
Buffer:	Liquid. Purified antibody supplied in 1x PBS buffer with 0.09 % (w/v) sodium azide and 2 % sucrose.
Preservative:	Sodium azide
Precaution of Use:	This product contains Sodium azide: a POISONOUS AND HAZARDOUS SUBSTANCE which should be handled by trained staff only.
Handling Advice:	Avoid repeated freeze-thaw cycles.
Storage:	-20 °C
Storage Comment:	For short term use, store at 2-8°C up to 1 week. For long term storage, store at -20°C in small aliquots to prevent freeze-thaw cycles.



Western Blotting

Image 1. WB Suggested Anti-SLC6A8 Antibody Titration: 2.5ug/ml Positive Control: MDA-MB-435S cell lysate SLC6A8 is strongly supported by BioGPS gene expression data to be expressed in Human MDA-MB435 cells

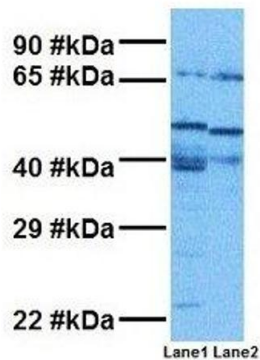


Rabbit Anti-SLC6A8 Antibody
Catalog Number: ARP42248
Lot Number: QC12939
Paraffin Embedded Tissue: Human Muscle
Cells with Positive label: Skeletal muscle cells (Indicated with Arrows)
Antibody Concentration: 4.0-8.0 µg/ml
Magnification: 400X

Immunohistochemistry

Image 2. Rabbit Anti-SLC6A8 Antibody Paraffin Embedded Tissue: Human Muscle Cellular Data: Skeletal muscle cells Antibody Concentration: 4.0-8.0 ug/ml Magnification: 400X

SLC6A8



Western Blotting

Image 3. Host: Rabbit Target Name: SLC6A8 Sample Tissue: Human MDA-MB-435s, Human THP-1 Antibody Dilution: 1.0ug/ml