

Datasheet for ABIN2775322  
**anti-NAMPT antibody (C-Term)**[Go to Product page](#)

3 Images

1 Publication

## Overview

Quantity:	100 µL
Target:	NAMPT
Binding Specificity:	C-Term
Reactivity:	Human, Rat, Mouse, Zebrafish (Danio rerio), Dog, Guinea Pig, Cow, Horse, Rabbit
Host:	Rabbit
Clonality:	Polyclonal
Conjugate:	This NAMPT antibody is un-conjugated
Application:	Western Blotting (WB), Immunohistochemistry (IHC)

## Product Details

Immunogen:	The immunogen is a synthetic peptide directed towards the C terminal region of human PBEF1
Sequence:	VTLEEGKGDLEEEYGQDLLHTVFKNGKVTKSYSFDEIRKNAQLNIELEAAH
Predicted Reactivity:	Cow: 93%, Dog: 93%, Guinea Pig: 100%, Horse: 93%, Human: 100%, Mouse: 93%, Rabbit: 93%, Rat: 100%, Zebrafish: 93%
Characteristics:	This is a rabbit polyclonal antibody against PBEF1. It was validated on Western Blot and immunohistochemistry.
Purification:	Protein A purified

## Target Details

Target:	NAMPT
---------	-------

## Target Details

Alternative Name:	PBEF1 ( <a href="#">NAMPT Products</a> )
Background:	<p>PBEF1 catalyzes the condensation of nicotinamide with 5-phosphoribosyl-1-pyrophosphate to yield nicotinamide mononucleotide, one step in the biosynthesis of nicotinamide adenine dinucleotide. The protein is an adipokine that is localized to the bloodstream and has various functions, including the promotion of vascular smooth muscle cell maturation and inhibition of neutrophil apoptosis. It also activates insulin receptor and has insulin-mimetic effects, lowering blood glucose and improving insulin sensitivity. The protein is highly expressed in visceral fat and serum levels of the protein correlate with obesity.</p> <p>Alias Symbols: 1110035O14Rik, DKFZP666B131, MGC117256, NAMPT, PBEF, VF, PBEF1, VISFATIN</p> <p>Protein Interaction Partner: UBC, NEDD8, NDRG1, CTSA, PEPD, MVD, GSR, ASS1, ANXA6, CD81, AKT2, ADORA2A, IFITM3, ND1, GGT1, FTL, CUL5, DDA1, GBAS, FANCA,</p> <p>Protein Size: 491</p>
Molecular Weight:	54 kDa
Gene ID:	10135
NCBI Accession:	<a href="#">NM_005746</a> , <a href="#">NP_005737</a>
UniProt:	<a href="#">P43490</a>

## Application Details

Application Notes:	Optimal working dilutions should be determined experimentally by the investigator.
Comment:	Antigen size: 491 AA
Restrictions:	For Research Use only

## Handling

Format:	Liquid
Concentration:	Lot specific
Buffer:	Liquid. Purified antibody supplied in 1x PBS buffer with 0.09 % (w/v) sodium azide and 2 % sucrose.
Preservative:	Sodium azide
Precaution of Use:	This product contains Sodium azide: a POISONOUS AND HAZARDOUS SUBSTANCE which should be handled by trained staff only.

## Handling

Handling Advice: Avoid repeated freeze-thaw cycles.

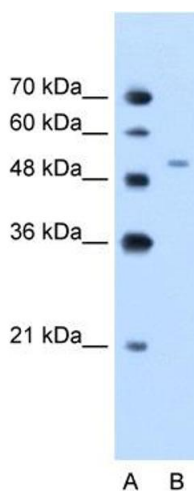
Storage: -20 °C

Storage Comment: For short term use, store at 2-8°C up to 1 week. For long term storage, store at -20°C in small aliquots to prevent freeze-thaw cycles.

## Publications

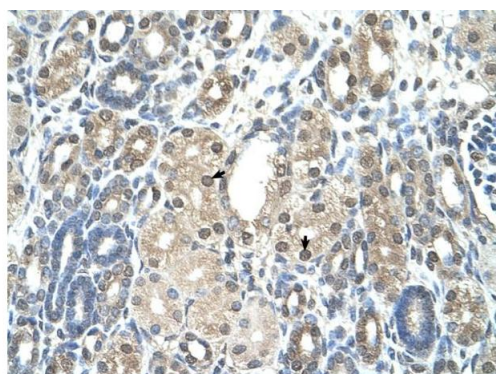
Product cited in: Small, Seman, Castator, Brown, Liggett: "False positive non-synonymous polymorphisms of G-protein coupled receptor genes." in: **FEBS letters**, Vol. 516, Issue 1-3, pp. 253-6, (2002) ([PubMed](#)).

## Images



### Western Blotting

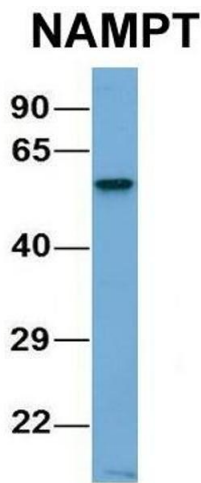
**Image 1.** WB Suggested Anti-PBEF1 Antibody Titration:  
1.25ug/ml Positive Control: Jurkat cell lysate



Rabbit Anti-PBEF1 Antibody  
Catalog Number: ARP42255  
Lot Number: QC12802  
Paraffin Embedded Tissue: Human Kidney  
Cells with Positive label: Epithelial cells of renal tubule (Indicated with Arrows)  
Antibody Concentration: 4.0-8.0 µg/ml  
Magnification: 400X

### Immunohistochemistry

**Image 2.** Rabbit Anti-PBEF1 Antibody Paraffin Embedded  
Tissue: Human Kidney Cellular Data: Epithelial cells of renal  
tubule Antibody Concentration: 4.0-8.0 ug/ml Magnification:  
400X



**Western Blotting**

**Image 3.** Host: Rabbit Target Name: CHAD Sample Type:  
Human Adult Placenta Antibody Dilution: 1.0ug/ml