



[Go to Product page](#)

Datasheet for ABIN2775326
anti-CALCRL antibody (N-Term)

1 Image

Overview

Quantity:	100 µL
Target:	CALCRL
Binding Specificity:	N-Term
Reactivity:	Human, Mouse, Rat, Cow, Dog, Horse, Rabbit, Goat, Guinea Pig, Zebrafish (Danio rerio)
Host:	Rabbit
Clonality:	Polyclonal
Conjugate:	This CALCRL antibody is un-conjugated
Application:	Western Blotting (WB)

Product Details

Immunogen:	The immunogen is a synthetic peptide directed towards the N terminal region of human CALCRL
Sequence:	DGNWFRHPAS NRTWTNYTQC NVNTHEKVKT ALNLFYLTII GHGLSIASLL
Predicted Reactivity:	Cow: 100%, Dog: 100%, Goat: 93%, Guinea Pig: 100%, Horse: 100%, Human: 100%, Mouse: 100%, Rabbit: 100%, Rat: 100%, Zebrafish: 90%
Characteristics:	This is a rabbit polyclonal antibody against CALCRL. It was validated on Western Blot using a cell lysate as a positive control.
Purification:	Affinity Purified

Target Details

Target:	CALCRL
---------	--------

Target Details

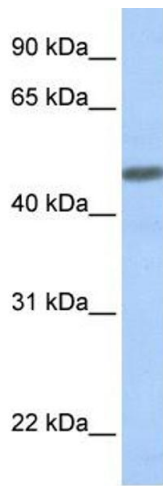
Alternative Name:	CALCRL (CALCRL Products)
Background:	<p>CALCRL is the receptor for calcitonin-gene-related peptide (CGRP) together with RAMP1 and receptor for adrenomedullin together with RAMP2 or RAMP3. The activity of this receptor is mediated by G proteins which activate adenylyl cyclase.</p> <p>Alias Symbols: CGRPR, CRLR</p> <p>Protein Interaction Partner: CALCA, CRCP, RAMP3, RAMP2, RAMP1, ADM,</p> <p>Protein Size: 461</p>
Molecular Weight:	53 kDa
Gene ID:	10203
NCBI Accession:	NM_005795 , NP_005786
UniProt:	Q16602
Pathways:	cAMP Metabolic Process

Application Details

Application Notes:	Optimal working dilutions should be determined experimentally by the investigator.
Comment:	Antigen size: 461 AA
Restrictions:	For Research Use only

Handling

Format:	Liquid
Concentration:	Lot specific
Buffer:	Liquid. Purified antibody supplied in 1x PBS buffer with 0.09 % (w/v) sodium azide and 2 % sucrose.
Preservative:	Sodium azide
Precaution of Use:	This product contains Sodium azide: a POISONOUS AND HAZARDOUS SUBSTANCE which should be handled by trained staff only.
Handling Advice:	Avoid repeated freeze-thaw cycles.
Storage:	-20 °C
Storage Comment:	For short term use, store at 2-8°C up to 1 week. For long term storage, store at -20°C in small aliquots to prevent freeze-thaw cycles.



Western Blotting

Image 1. WB Suggested Anti-CALCRL Antibody Titration:
0.2-1 ug/ml ELISA Titer: 1:12500 Positive Control: Human
Muscle