

Datasheet for ABIN2775328
anti-PRSS16 antibody (Middle Region)

3 Images

[Go to Product page](#)

Overview

Quantity:	100 µL
Target:	PRSS16
Binding Specificity:	Middle Region
Reactivity:	Human, Mouse, Cow, Guinea Pig, Rat, Dog, Horse, Rabbit, Pig
Host:	Rabbit
Clonality:	Polyclonal
Conjugate:	This PRSS16 antibody is un-conjugated
Application:	Western Blotting (WB)

Product Details

Immunogen:	The immunogen is a synthetic peptide directed towards the middle region of human PRSS16
Sequence:	SHSTPYCGLR RAVQIVLHSL GQKCLSFSRA ETVAQLRSTE PQLSGVGDRQ
Predicted Reactivity:	Cow: 86%, Dog: 100%, Guinea Pig: 85%, Horse: 92%, Human: 100%, Mouse: 100%, Pig: 100%, Rabbit: 93%, Rat: 93%
Characteristics:	This is a rabbit polyclonal antibody against PRSS16. It was validated on Western Blot using a cell lysate as a positive control.
Purification:	Affinity Purified

Target Details

Target:	PRSS16
---------	--------

Target Details

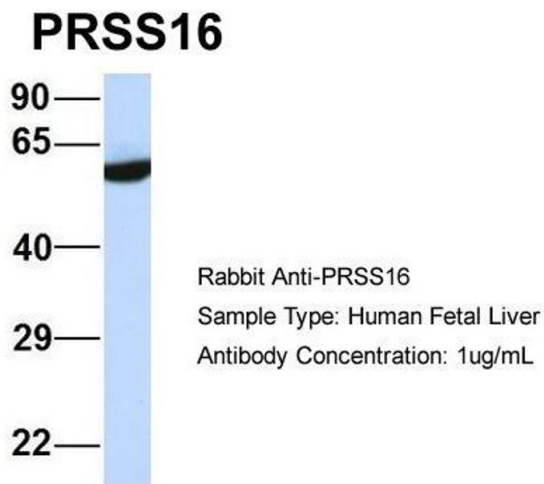
Alternative Name:	PRSS16 (PRSS16 Products)
Background:	<p>This gene encodes a serine protease expressed exclusively in the thymus. It is thought to play a role in the alternative antigen presenting pathway used by cortical thymic epithelial cells during the positive selection of T cells. The gene is found in the</p> <p>Alias Symbols: FLJ36271, FLJ40714, FLJ44172, TSSP</p> <p>Protein Size: 514</p>
Molecular Weight:	55 kDa
Gene ID:	10279
NCBI Accession:	NM_005865 , NP_005856
UniProt:	Q9NQE7

Application Details

Application Notes:	Optimal working dilutions should be determined experimentally by the investigator.
Comment:	Antigen size: 514 AA
Restrictions:	For Research Use only

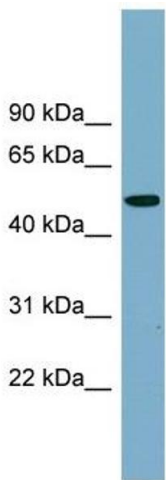
Handling

Format:	Liquid
Concentration:	Lot specific
Buffer:	Liquid. Purified antibody supplied in 1x PBS buffer with 0.09 % (w/v) sodium azide and 2 % sucrose.
Preservative:	Sodium azide
Precaution of Use:	This product contains Sodium azide: a POISONOUS AND HAZARDOUS SUBSTANCE which should be handled by trained staff only.
Handling Advice:	Avoid repeated freeze-thaw cycles.
Storage:	-20 °C
Storage Comment:	For short term use, store at 2-8°C up to 1 week. For long term storage, store at -20°C in small aliquots to prevent freeze-thaw cycles.



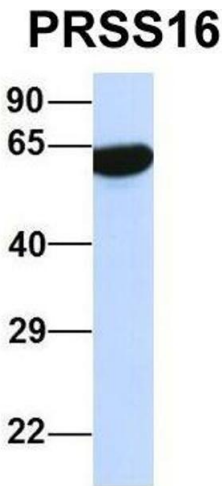
Western Blotting

Image 1. Host: Rabbit Target Name: PRSS16 Sample Type: Human Fetal Liver Antibody Dilution: 1.0ug/ml



Western Blotting

Image 2. WB Suggested Anti-PRSS16 Antibody Titration: 0.2-1 ug/ml Positive Control: Human kidney



Western Blotting

Image 3. Host: Rabbit Target Name: PRSS16 Sample Type: Human 293T Antibody Dilution: 1.0ug/ml PRSS16 is supported by BioGPS gene expression data to be expressed in HEK293T