



[Go to Product page](#)

Datasheet for ABIN2775332

anti-ENDOU antibody (Middle Region)

1 Image

Overview

Quantity:	100 µL
Target:	ENDOU
Binding Specificity:	Middle Region
Reactivity:	Human, Rat, Mouse, Horse, Rabbit, Cow, Dog, Guinea Pig
Host:	Rabbit
Clonality:	Polyclonal
Conjugate:	This ENDOU antibody is un-conjugated
Application:	Western Blotting (WB)

Product Details

Sequence:	VDRSPEPLFT YVNEKLFSKP TYAAFINLLN NYQRATGHGE HFSAQQLEEQ
Predicted Reactivity:	Cow: 92%, Dog: 75%, Guinea Pig: 93%, Horse: 93%, Human: 100%, Mouse: 100%, Rabbit: 83%, Rat: 100%
Characteristics:	This is a rabbit polyclonal antibody against Endou. It was validated on Western Blot.
Purification:	Affinity Purified

Target Details

Target:	ENDOU
Alternative Name:	Endou (ENDOU Products)
Background:	Endou is an endoribonuclease that cleaves single-stranded RNAs at uridylates and releases

Target Details

products that have 2'-3'-cyclic phosphate termini.

Alias Symbols: Pp11r, Tcl-30

Protein Size: 412

Molecular Weight: 45 kDa

Gene ID: 19011

NCBI Accession: [NM_001168693](#), [NP_001162164](#)

UniProt: [Q3V188](#)

Application Details

Application Notes: Optimal working dilutions should be determined experimentally by the investigator.

Comment: Antigen size: 412 AA

Restrictions: For Research Use only

Handling

Format: Liquid

Concentration: Lot specific

Buffer: Liquid. Purified antibody supplied in 1x PBS buffer with 0.09 % (w/v) sodium azide and 2 % sucrose.

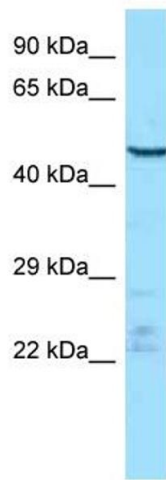
Preservative: Sodium azide

Precaution of Use: This product contains Sodium azide: a POISONOUS AND HAZARDOUS SUBSTANCE which should be handled by trained staff only.

Handling Advice: Avoid repeated freeze-thaw cycles.

Storage: -20 °C

Storage Comment: For short term use, store at 2-8°C up to 1 week. For long term storage, store at -20°C in small aliquots to prevent freeze-thaw cycles.



Western Blotting

Image 1. WB Suggested Anti-Endou Antibody Titration: 1.0 ug/ml Positive Control: Mouse Thymus