



[Go to Product page](#)

Datasheet for ABIN2775333

anti-Cytokeratin 1 antibody (Middle Region)

3 Images

Overview

Quantity:	100 µL
Target:	Cytokeratin 1 (KRT1)
Binding Specificity:	Middle Region
Reactivity:	Human, Rat, Rabbit, Dog
Host:	Rabbit
Clonality:	Polyclonal
Conjugate:	This Cytokeratin 1 antibody is un-conjugated
Application:	Western Blotting (WB), Immunohistochemistry (IHC)

Product Details

Immunogen:	The immunogen is a synthetic peptide directed towards the middle region of human KRT1
Sequence:	GSYGSGSSSG GYRGGSGGGG GGSSGGRGSG GGSSGGSIGG RGSSSGGVKS
Predicted Reactivity:	Dog: 86%, Human: 100%, Rabbit: 93%, Rat: 93%
Characteristics:	This is a rabbit polyclonal antibody against KRT1. It was validated on Western Blot using a cell lysate as a positive control.
Purification:	Affinity Purified

Target Details

Target:	Cytokeratin 1 (KRT1)
Alternative Name:	KRT1 (KRT1 Products)

Target Details

Background:	<p>KRT1 is a member of the keratin gene family. The type II cytokeratins consist of basic or neutral proteins which are arranged in pairs of heterotypic keratin chains coexpressed during differentiation of simple and stratified epithelial tissues. This type II cytokeratin is specifically expressed in the spinous and granular layers of the epidermis with family member KRT10 and mutations in these genes have been associated with bullous congenital ichthyosiform erythroderma. The protein encoded by this gene is a member of the keratin gene family. The type II cytokeratins consist of basic or neutral proteins which are arranged in pairs of heterotypic keratin chains coexpressed during differentiation of simple and stratified epithelial tissues. This type II cytokeratin is specifically expressed in the spinous and granular layers of the epidermis with family member KRT10 and mutations in these genes have been associated with bullous congenital ichthyosiform erythroderma. The type II cytokeratins are clustered in a region of chromosome 12q12-q13. Publication Note: This RefSeq record includes a subset of the publications that are available for this gene. Please see the Entrez Gene record to access additional publications.</p> <p>Alias Symbols: CK1, EHK1, K1, KRT1A, EHK, EPPK, NEPPK</p> <p>Protein Interaction Partner: MDM2, LGR4, EED, ESR1, ADRB2, PAN2, Iqcb1, Nphp4, Cep290, Nphp1, Invs, GRDX, VCAM1, UBC, ITGA4, FN1, CDH1, APOA1, ALB, MAGOH, EIF4A3, KRT10, KRT9, KRT2, SLC25A5, SHC1, PIK3R2, INPPL1, GRB2, EPS15, CRK, AP2M1, CBL, UBASH3B, NEDD8, CAND1, DCUN1D1, COPS5, CO</p> <p>Protein Size: 644</p>
-------------	--

Molecular Weight:	66 kDa
-------------------	--------

Gene ID:	3848
----------	------

NCBI Accession:	NM_006121 , NP_006112
-----------------	---

UniProt:	P04264
----------	------------------------

Application Details

Application Notes:	Optimal working dilutions should be determined experimentally by the investigator.
--------------------	--

Comment:	Antigen size: 644 AA
----------	----------------------

Restrictions:	For Research Use only
---------------	-----------------------

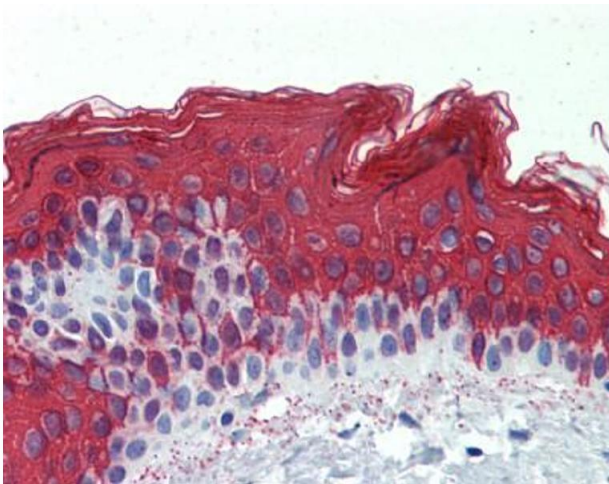
Handling

Format:	Liquid
---------	--------

Handling

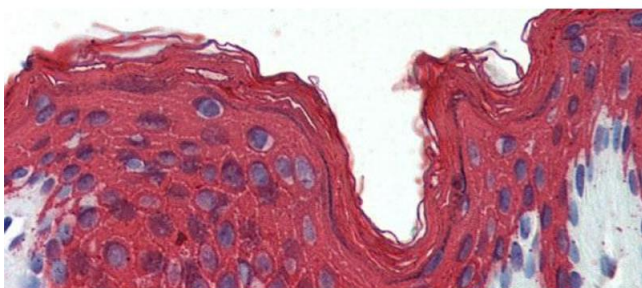
Concentration:	Lot specific
Buffer:	Liquid. Purified antibody supplied in 1x PBS buffer with 0.09 % (w/v) sodium azide and 2 % sucrose.
Preservative:	Sodium azide
Precaution of Use:	This product contains Sodium azide: a POISONOUS AND HAZARDOUS SUBSTANCE which should be handled by trained staff only.
Handling Advice:	Avoid repeated freeze-thaw cycles.
Storage:	-20 °C
Storage Comment:	For short term use, store at 2-8°C up to 1 week. For long term storage, store at -20°C in small aliquots to prevent freeze-thaw cycles.

Images



Immunohistochemistry

Image 1.



Immunohistochemistry

Image 2. Rabbit Anti-KRT1 Antibody arp42278 Paraffin Embedded Tissue: Human Skin Antibody Concentration: 1.25-2.5 ug/ml



Western Blotting

Image 3. WB Suggested Anti-KRT1 Antibody Titration: 1 ug/ml Positive Control: 293T cells lysate