



Datasheet for ABIN2775338
anti-AGR2 antibody (Middle Region)



[Go to Product page](#)

3 Images

Overview

Quantity:	100 µL
Target:	AGR2
Binding Specificity:	Middle Region
Reactivity:	Human, Mouse, Rat, Cow, Dog, Horse, Rabbit, Guinea Pig, Zebrafish (Danio rerio)
Host:	Rabbit
Clonality:	Polyclonal
Conjugate:	This AGR2 antibody is un-conjugated
Application:	Western Blotting (WB), Immunohistochemistry (IHC)

Product Details

Immunogen:	The immunogen is a synthetic peptide directed towards the middle region of human AGR2
Sequence:	AEQFVLLNLV YETTDKHLSP DGQYVPRIMF VDPSLTVRAD ITGRYSNRLY
Predicted Reactivity:	Cow: 100%, Dog: 100%, Guinea Pig: 100%, Horse: 100%, Human: 100%, Mouse: 100%, Rabbit: 100%, Rat: 100%, Zebrafish: 100%
Characteristics:	This is a rabbit polyclonal antibody against AGR2. It was validated on Western Blot using a cell lysate as a positive control.
Purification:	Affinity Purified

Target Details

Target:	AGR2
---------	------

Target Details

Alternative Name:	AGR2 (AGR2 Products)
Background:	<p>AGR2 and hAG-3, human homologues of genes involved in differentiation, are associated with oestrogen receptor-positive breast tumours and interact with metastasis gene C4.4a and dystroglycan. Increased AGR2 expression is a valuable prognostic factor to predict the clinical outcome of the prostate cancer patients.</p> <p>Alias Symbols: AG2, GOB-4, HAG-2, XAG-2, PDIA17</p> <p>Protein Interaction Partner: UBQLN1, HUWE1, POM121, KRT31, FABP2, CATSPER1, NUP62CL, ATP4A, NPM1, NOS2, MLH1, APP, UBQLN4, LYPD3, DAG1, POU5F1, MED31, CCDC90B, BRD7, CRMP1,</p> <p>Protein Size: 175</p>
Molecular Weight:	20 kDa
Gene ID:	10551
NCBI Accession:	NM_006408 , NP_006399
UniProt:	O95994

Application Details

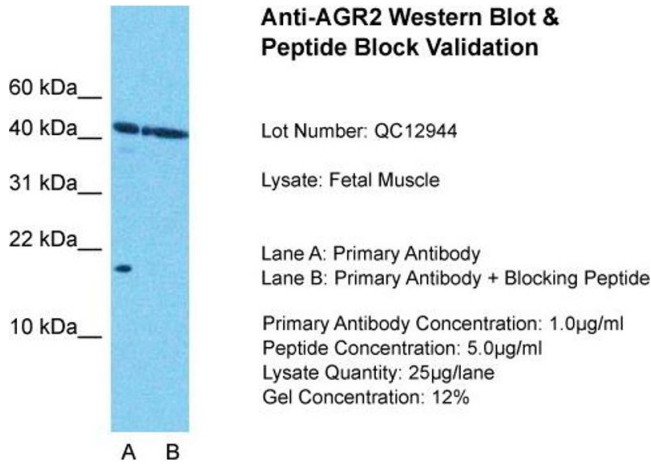
Application Notes:	Optimal working dilutions should be determined experimentally by the investigator.
Comment:	Antigen size: 175 AA
Restrictions:	For Research Use only

Handling

Format:	Liquid
Concentration:	Lot specific
Buffer:	Liquid. Purified antibody supplied in 1x PBS buffer with 0.09 % (w/v) sodium azide and 2 % sucrose.
Preservative:	Sodium azide
Precaution of Use:	This product contains Sodium azide: a POISONOUS AND HAZARDOUS SUBSTANCE which should be handled by trained staff only.
Handling Advice:	Avoid repeated freeze-thaw cycles.
Storage:	-20 °C

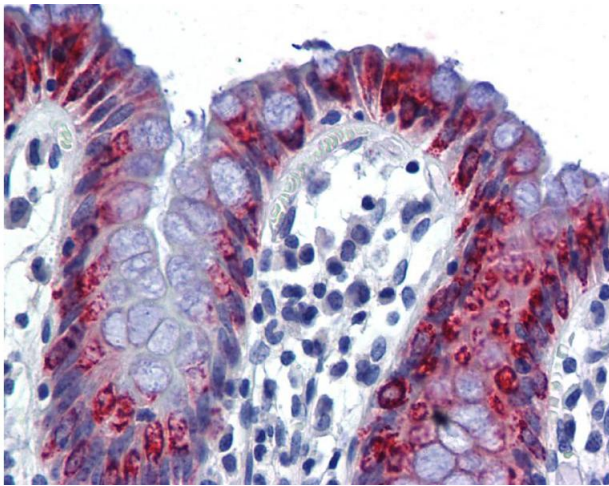
Storage Comment: For short term use, store at 2-8°C up to 1 week. For long term storage, store at -20°C in small aliquots to prevent freeze-thaw cycles.

Images



Western Blotting

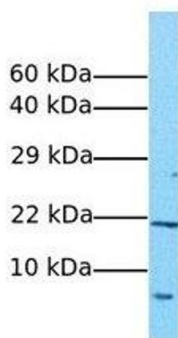
Image 1. Host: Rabbit
Target Name: AGR2
Sample Tissue: Fetal Muscle
Lane A: Primary Antibody
Lane B: Primary Antibody + Blocking Peptide
Primary Antibody Concentration: 1 µg/mL
Peptide Concentration: 5 µg/mL
Lysate Quantity: 41 µg/lane
Gel Concentration: 12 %



Immunohistochemistry

Image 2.

AGR2



Western Blotting

Image 3. Host: Rabbit
Target Name: AGR2
Sample Tissue: Human MCF7
Antibody Dilution: 1.0ug/ml