

Datasheet for ABIN2775342

anti-SLC17A3 antibody (Middle Region)[Go to Product page](#)**1** Image

Overview

Quantity:	100 µL
Target:	SLC17A3
Binding Specificity:	Middle Region
Reactivity:	Human, Cow, Horse
Host:	Rabbit
Clonality:	Polyclonal
Conjugate:	This SLC17A3 antibody is un-conjugated
Application:	Western Blotting (WB)

Product Details

Immunogen:	The immunogen is a synthetic peptide directed towards the middle region of human SLC17A3
Sequence:	FVVIYDDPVS YPWISTSEKE YIISSLKQV GSSKQPLPIK AMLRSLPIWS
Predicted Reactivity:	Cow: 85%, Horse: 85%, Human: 100%
Characteristics:	This is a rabbit polyclonal antibody against SLC17A3. It was validated on Western Blot using a cell lysate as a positive control.
Purification:	Affinity Purified

Target Details

Target:	SLC17A3
Alternative Name:	SLC17A3 (SLC17A3 Products)

Target Details

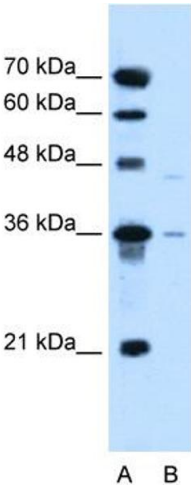
Background:	SLC17A3 may be involved in actively transporting phosphate into cells via Na(+) cotransport. Alias Symbols: NPT4 Protein Size: 420
Molecular Weight:	46 kDa
Gene ID:	10786
NCBI Accession:	NM_006632 , NP_006623
UniProt:	Q9H533

Application Details

Application Notes:	Optimal working dilutions should be determined experimentally by the investigator.
Comment:	Antigen size: 420 AA
Restrictions:	For Research Use only

Handling

Format:	Liquid
Concentration:	Lot specific
Buffer:	Liquid. Purified antibody supplied in 1x PBS buffer with 0.09 % (w/v) sodium azide and 2 % sucrose.
Preservative:	Sodium azide
Precaution of Use:	This product contains Sodium azide: a POISONOUS AND HAZARDOUS SUBSTANCE which should be handled by trained staff only.
Handling Advice:	Avoid repeated freeze-thaw cycles.
Storage:	-20 °C
Storage Comment:	For short term use, store at 2-8°C up to 1 week. For long term storage, store at -20°C in small aliquots to prevent freeze-thaw cycles.



Western Blotting

Image 1. WB Suggested Anti-SLC17A3 Antibody Titration:
0.2-1 ug/ml Positive Control: HepG2 cell lysate