

Datasheet for ABIN2775343

anti-SLC22A7 antibody (N-Term)

4 Images

1 Publication

[Go to Product page](#)

Overview

Quantity:	100 µL
Target:	SLC22A7
Binding Specificity:	N-Term
Reactivity:	Human, Rat, Horse, Rabbit, Cow, Guinea Pig
Host:	Rabbit
Clonality:	Polyclonal
Conjugate:	This SLC22A7 antibody is un-conjugated
Application:	Western Blotting (WB), Immunohistochemistry (IHC)

Product Details

Immunogen:	The immunogen is a synthetic peptide directed towards the N terminal region of human SLC22A7
Sequence:	LPGAPANFSH QDVWLEAHL P REPDGTLSSC LRFAYPQALP NTTLGEERQS
Predicted Reactivity:	Cow: 92%, Guinea Pig: 93%, Horse: 100%, Human: 100%, Rabbit: 79%, Rat: 86%
Characteristics:	This is a rabbit polyclonal antibody against SLC22A7. It was validated on Western Blot and immunohistochemistry.
Purification:	Protein A purified

Target Details

Target:	SLC22A7
---------	---------

Target Details

Alternative Name:	SLC22A7 (SLC22A7 Products)
Background:	<p>SLC22A7 is involved in the sodium-independent transport and excretion of organic anions, some of which are potentially toxic. The protein is an integral membrane protein and appears to be localized to the basolateral membrane of the kidney. The protein encoded by this gene is involved in the sodium-independent transport and excretion of organic anions, some of which are potentially toxic. The encoded protein is an integral membrane protein and appears to be localized to the basolateral membrane of the kidney. Alternatively spliced transcript variants encoding different isoforms have been described.</p> <p>Alias Symbols: MGC24091, MGC45202, NLT, OAT2</p> <p>Protein Size: 546</p>
Molecular Weight:	60 kDa
Gene ID:	10864
NCBI Accession:	NM_006672 , NP_006663
UniProt:	Q5T048

Application Details

Application Notes:	Optimal working dilutions should be determined experimentally by the investigator.
Comment:	Antigen size: 546 AA
Restrictions:	For Research Use only

Handling

Format:	Liquid
Concentration:	Lot specific
Buffer:	Liquid. Purified antibody supplied in 1x PBS buffer with 0.09 % (w/v) sodium azide and 2 % sucrose.
Preservative:	Sodium azide
Precaution of Use:	This product contains Sodium azide: a POISONOUS AND HAZARDOUS SUBSTANCE which should be handled by trained staff only.
Handling Advice:	Avoid repeated freeze-thaw cycles.
Storage:	-20 °C

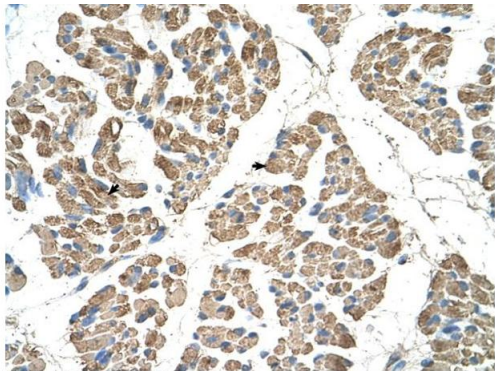
Handling

Storage Comment: For short term use, store at 2-8°C up to 1 week. For long term storage, store at -20°C in small aliquots to prevent freeze-thaw cycles.

Publications

Product cited in: Lazrek, Goffard, Schanen, Karquel, Bocket, Lion, Devaux, Hedouin, Gosset, Hober: "Detection of hepatitis C virus antibodies and RNA among medicolegal autopsy cases in Northern France." in: **Diagnostic microbiology and infectious disease**, Vol. 55, Issue 1, pp. 55-8, (2006) ([PubMed](#)).

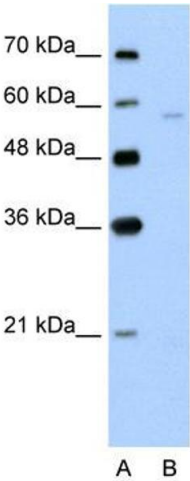
Images



Rabbit Anti-SLC22A7 Antibody
Catalog Number: ARP42306
Lot Number: QC13035
Paraffin Embedded Tissue: Human Muscle
Cells with Positive label: Skeletal muscle cells (Indicated with Arrows)
Antibody Concentration: 4.0-8.0 µg/ml
Magnification: 400X

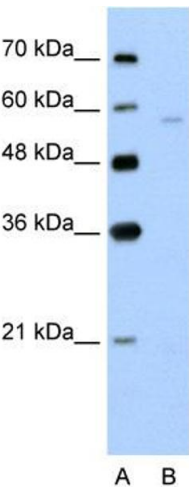
Immunohistochemistry

Image 1. Rabbit Anti-SLC22A7 Antibody Paraffin Embedded
Tissue: Human Muscle Cellular Data: Skeletal muscle cells
Antibody Concentration: 4.0-8.0 ug/ml Magnification: 400X



Western Blotting

Image 2. WB Suggested Anti-SLC22A7
Antibody Titration: 5.0 µg/mL
Positive Control: Jurkat cell lysate
There is BioGPS gene expression data showing that SLC22A7 is expressed in Jurkat



Western Blotting

Image 3. WB Suggested Anti-SLC22A7 Antibody Titration: 5.0ug/ml Positive Control: Jurkat cell lysate There is BioGPS gene expression data showing that SLC22A7 is expressed in Jurkat

Please check the [product details page](#) for more images. Overall 4 images are available for ABIN2775343.