



[Go to Product page](#)

Datasheet for ABIN2775349

## anti-SLC20A2 antibody (N-Term)

### 1 Image

#### Overview

Quantity:	100 µL
Target:	SLC20A2
Binding Specificity:	N-Term
Reactivity:	Human, Mouse, Rat, Dog, Guinea Pig, Horse, Rabbit, Zebrafish (Danio rerio), Cow
Host:	Rabbit
Clonality:	Polyclonal
Conjugate:	This SLC20A2 antibody is un-conjugated
Application:	Western Blotting (WB)

#### Product Details

Immunogen:	The immunogen is a synthetic peptide directed towards the N terminal region of human SLC20A2
Sequence:	DVNLNETVE TLMAGEVSAM VGSVWQLIA SFLRLPISGT HCIVGSTIGF
Predicted Reactivity:	Cow: 100%, Dog: 100%, Guinea Pig: 100%, Horse: 100%, Human: 100%, Mouse: 100%, Rabbit: 100%, Rat: 100%, Zebrafish: 93%
Characteristics:	This is a rabbit polyclonal antibody against SLC20A2. It was validated on Western Blot using a cell lysate as a positive control.
Purification:	Affinity Purified

#### Target Details

Target:	SLC20A2
---------	---------

## Target Details

---

Alternative Name:	SLC20A2 ( <a href="#">SLC20A2 Products</a> )
Background:	The function remains unknown. Alias Symbols: GLVR2, Glvr-2, MLVAR, PIT-2, Ram1, pit2, hPit2 Protein Interaction Partner: UBC, Protein Size: 652
Molecular Weight:	70 kDa
Gene ID:	6575
NCBI Accession:	<a href="#">NM_006749</a> , <a href="#">NP_006740</a>
UniProt:	<a href="#">Q08357</a>

## Application Details

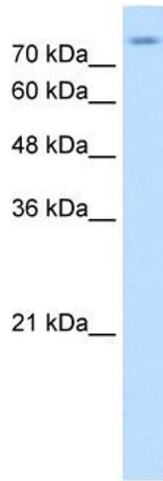
---

Application Notes:	Optimal working dilutions should be determined experimentally by the investigator.
Comment:	Antigen size: 652 AA
Restrictions:	For Research Use only

## Handling

---

Format:	Liquid
Concentration:	Lot specific
Buffer:	Liquid. Purified antibody supplied in 1x PBS buffer with 0.09 % (w/v) sodium azide and 2 % sucrose.
Preservative:	Sodium azide
Precaution of Use:	This product contains Sodium azide: a POISONOUS AND HAZARDOUS SUBSTANCE which should be handled by trained staff only.
Handling Advice:	Avoid repeated freeze-thaw cycles.
Storage:	-20 °C
Storage Comment:	For short term use, store at 2-8°C up to 1 week. For long term storage, store at -20°C in small aliquots to prevent freeze-thaw cycles.



### Western Blotting

**Image 1.** WB Suggested Anti-SLC20A2 Antibody Titration:  
0.2-1 ug/ml Positive Control: HepG2 cell lysate