

Datasheet for ABIN2775351
anti-SLC38A3 antibody (N-Term)

6 Images

[Go to Product page](#)

Overview

Quantity:	100 µL
Target:	SLC38A3
Binding Specificity:	N-Term
Reactivity:	Human, Mouse, Rat, Cow, Horse, Pig, Rabbit, Dog, Guinea Pig, Sheep
Host:	Rabbit
Clonality:	Polyclonal
Conjugate:	This SLC38A3 antibody is un-conjugated
Application:	Western Blotting (WB), Immunohistochemistry (IHC)

Product Details

Immunogen:	The immunogen is a synthetic peptide directed towards the N terminal region of human SLC38A3
Sequence:	GNQRVEDPAR SCMEGKSFLQ KSPSKEPHFT DFEGKTSFGM SVFNLSNAIM
Predicted Reactivity:	Cow: 100%, Dog: 93%, Guinea Pig: 86%, Horse: 100%, Human: 100%, Mouse: 100%, Pig: 100%, Rabbit: 100%, Rat: 100%, Sheep: 86%
Characteristics:	This is a rabbit polyclonal antibody against SLC38A3. It was validated on Western Blot using a cell lysate as a positive control.
Purification:	Affinity Purified

Target Details

Target:	SLC38A3
---------	---------

Target Details

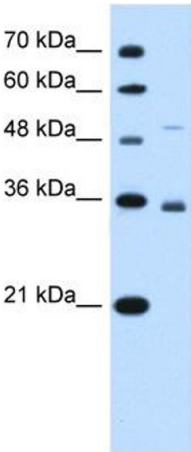
Alternative Name:	SLC38A3 (SLC38A3 Products)
Background:	<p>As a sodium-dependent amino acid/proton antiporter, SLC38A3 mediates electrogenic cotransport of glutamine and sodium ions in exchange for protons. It also recognizes histidine, asparagine and alanine. It may mediate amino acid transport in either direction under physiological conditions and may play a role in nitrogen metabolism and synaptic transmission.</p> <p>Alias Symbols: G17, SN1, NAT1</p> <p>Protein Interaction Partner: HMGN1, COL6A2, NEDD4, SETDB1,</p> <p>Protein Size: 504</p>
Molecular Weight:	56 kDa
Gene ID:	10991
NCBI Accession:	NM_006841 , NP_006832
UniProt:	Q99624

Application Details

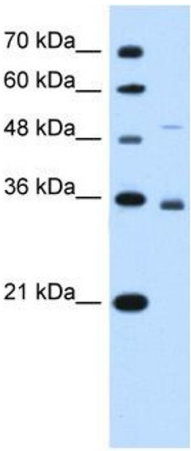
Application Notes:	Optimal working dilutions should be determined experimentally by the investigator.
Comment:	Antigen size: 504 AA
Restrictions:	For Research Use only

Handling

Format:	Liquid
Concentration:	Lot specific
Buffer:	Liquid. Purified antibody supplied in 1x PBS buffer with 0.09 % (w/v) sodium azide and 2 % sucrose.
Preservative:	Sodium azide
Precaution of Use:	This product contains Sodium azide: a POISONOUS AND HAZARDOUS SUBSTANCE which should be handled by trained staff only.
Handling Advice:	Avoid repeated freeze-thaw cycles.
Storage:	-20 °C
Storage Comment:	For short term use, store at 2-8°C up to 1 week. For long term storage, store at -20°C in small aliquots to prevent freeze-thaw cycles.

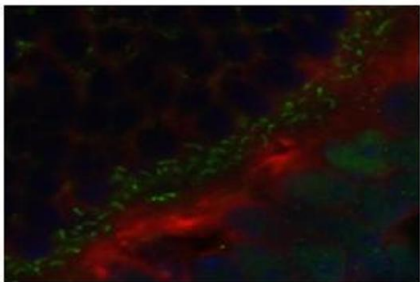


A B



A B

SLC38A3



Red: SLC38A3 antibody
Green: CtBP antibody
Blue: DAPI

See IHC 1 Data and Customer Feedback for more information

Western Blotting

Image 1. WB Suggested Anti-SLC38A3 Antibody Titration:
0.2-1 ug/ml Positive Control: HepG2 cell lysate SLC38A3 is supported by BioGPS gene expression data to be expressed in HepG2

Western Blotting

Image 2. WB Suggested Anti-SLC38A3
Antibody Titration: 0.2-1 µg/mL
Positive Control: HepG2 cell lysate
SLC38A3 is supported by BioGPS gene expression data to be expressed in HepG2

Immunohistochemistry

Image 3. Primary Antibody Dilution : 1:200 Secondary
Antibody : Goat anti-rabbit Alexafluor 568 Secondary
Antibody Dilution : 1:200 Color/Signal Descriptions :
SLC38A3: Red CtBp: Green DAPI: Blue Gene Name :
SLC38A3 Submitted by : Anonymous

Please check the [product details page](#) for more images. Overall 6 images are available for ABIN2775351.