

Datasheet for ABIN2775352
anti-PSG1 antibody (N-Term)



[Go to Product page](#)

2 Images

Overview

Quantity:	100 µL
Target:	PSG1
Binding Specificity:	N-Term
Reactivity:	Human
Host:	Rabbit
Clonality:	Polyclonal
Conjugate:	This PSG1 antibody is un-conjugated
Application:	Western Blotting (WB), Immunohistochemistry (IHC)

Product Details

Immunogen:	The immunogen is a synthetic peptide directed towards the N terminal region of human PSG1
Sequence:	SGRETAYSNA SLLIQNVTRE DAGSYTLHII KGDDGTRGVT GRFTFTLHLE
Predicted Reactivity:	Human: 100%
Characteristics:	This is a rabbit polyclonal antibody against PSG1. It was validated on Western Blot and immunohistochemistry.
Purification:	Protein A purified

Target Details

Target:	PSG1
Alternative Name:	PSG1 (PSG1 Products)

Target Details

Background: The function remains unknown.
Alias Symbols: B1G1, CD66f, DHFRP2, FLJ90598, FLJ90654, PBG1, PSBG1, PSGGA, PSGIIA, SP1
Protein Interaction Partner: OGT, UTP14A,
Protein Size: 426

Molecular Weight: 47 kDa

Gene ID: 5669

NCBI Accession: [NM_006905](#), [NP_008836](#)

UniProt: [Q6ICR4](#)

Application Details

Application Notes: Optimal working dilutions should be determined experimentally by the investigator.

Comment: Antigen size: 426 AA

Restrictions: For Research Use only

Handling

Format: Liquid

Concentration: Lot specific

Buffer: Liquid. Purified antibody supplied in 1x PBS buffer with 0.09 % (w/v) sodium azide and 2 % sucrose.

Preservative: Sodium azide

Precaution of Use: This product contains Sodium azide: a POISONOUS AND HAZARDOUS SUBSTANCE which should be handled by trained staff only.

Handling Advice: Avoid repeated freeze-thaw cycles.

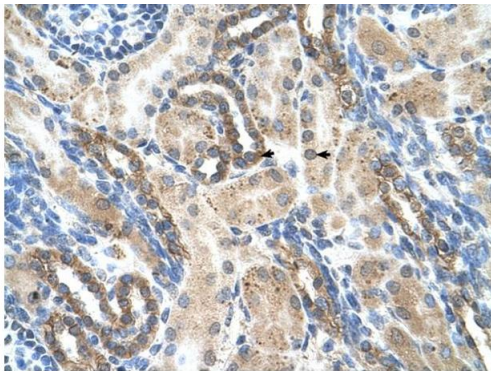
Storage: -20 °C

Storage Comment: For short term use, store at 2-8°C up to 1 week. For long term storage, store at -20°C in small aliquots to prevent freeze-thaw cycles.



Western Blotting

Image 1. WB Suggested Anti-PSG1 Antibody Titration: 2.5ug/ml Positive Control: Jurkat cell lysate



Immunohistochemistry

Image 2. Rabbit Anti-PSG1 Antibody Paraffin Embedded Tissue: Human Kidney Cellular Data: Epithelial cells of renal tubule Antibody Concentration: 4.0-8.0 ug/ml Magnification: 400X

Rabbit Anti-PSG1 Antibody
Catalog Number: ARP42325
Lot Number: QC15331
Paraffin Embedded Tissue: Human Kidney
Cells with Positive label: Epithelial cells of renal tubule (Indicated with Arrows)
Antibody Concentration: 4.0-8.0 µg/ml
Magnification: 400X