

Datasheet for ABIN2775354  
**anti-GLYT1 antibody (C-Term)**[Go to Product page](#)

## 2 Images

## Overview

Quantity:	100 µL
Target:	GLYT1
Binding Specificity:	C-Term
Reactivity:	Rat, Human, Mouse, Dog, Guinea Pig, Rabbit, Cow, Horse
Host:	Rabbit
Clonality:	Polyclonal
Conjugate:	This GLYT1 antibody is un-conjugated
Application:	Western Blotting (WB)

## Product Details

Immunogen:	The immunogen is a synthetic peptide corresponding to a region of Mouse
Sequence:	FQLCRTDGD T LLQRLKNATK PSRDWGPALL EHRTGRYAPT TTPSPEDGFE
Predicted Reactivity:	Cow: 100%, Dog: 100%, Guinea Pig: 100%, Horse: 100%, Human: 100%, Mouse: 100%, Rabbit: 93%, Rat: 100%
Characteristics:	This is a rabbit polyclonal antibody against Slc6a9. It was validated on Western Blot.
Purification:	Affinity Purified

## Target Details

Target:	GLYT1
Alternative Name:	Slc6a9 ( <a href="#">GLYT1 Products</a> )

## Target Details

Background:	Slc6a9 terminates the action of glycine by its high affinity sodium-dependent reuptake into presynaptic terminals. It may play a role in regulation of glycine levels in NMDA receptor-mediated neurotransmission. Alias Symbols: Glyt-1, Glyt1 Protein Size: 633
-------------	---

Molecular Weight:	70 kDa
-------------------	--------

Gene ID:	14664
----------	-------

NCBI Accession:	<a href="#">NM_008135</a> , <a href="#">NP_032161</a>
-----------------	---

## Application Details

Application Notes:	Optimal working dilutions should be determined experimentally by the investigator.
--------------------	--

Comment:	Antigen size: 633 AA
----------	----------------------

Restrictions:	For Research Use only
---------------	-----------------------

## Handling

Format:	Liquid
---------	--------

Concentration:	Lot specific
----------------	--------------

Buffer:	Liquid. Purified antibody supplied in 1x PBS buffer with 0.09 % (w/v) sodium azide and 2 % sucrose.
---------	---

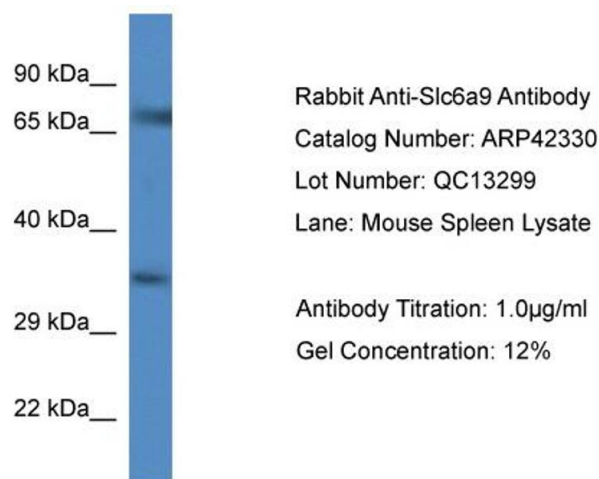
Preservative:	Sodium azide
---------------	--------------

Precaution of Use:	This product contains Sodium azide: a POISONOUS AND HAZARDOUS SUBSTANCE which should be handled by trained staff only.
--------------------	--

Handling Advice:	Avoid repeated freeze-thaw cycles.
------------------	------------------------------------

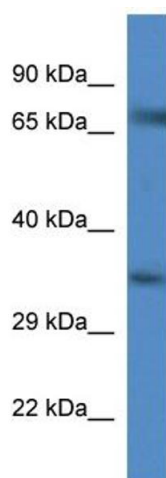
Storage:	-20 °C
----------	--------

Storage Comment:	For short term use, store at 2-8°C up to 1 week. For long term storage, store at -20°C in small aliquots to prevent freeze-thaw cycles.
------------------	---



Western Blotting

**Image 1.** Host: Rabbit Target Name: SLC6A9 Sample  
Tissue: Mouse Spleen Antibody Dilution: 1ug/ml



Western Blotting

**Image 2.** WB Suggested Anti-Slc6a9 AntibodyTitration: 1.0  
µg/mL  
Positive Control: Mouse Spleen