

Datasheet for ABIN2775368
anti-GPR161 antibody (N-Term)[Go to Product page](#)

2 Images

1 Publication

Overview

Quantity:	100 µL
Target:	GPR161
Binding Specificity:	N-Term
Reactivity:	Human, Mouse, Rat, Guinea Pig, Dog, Horse, Rabbit, Pig
Host:	Rabbit
Clonality:	Polyclonal
Conjugate:	This GPR161 antibody is un-conjugated
Application:	Western Blotting (WB), Immunohistochemistry (IHC)

Product Details

Immunogen:	The immunogen is a synthetic peptide directed towards the N terminal region of human GPR161
Sequence:	MSLNSSLSCR KELSNTLEE GEGGVITQ FIAIVITIF VCLGNLVIV
Predicted Reactivity:	Dog: 93%, Guinea Pig: 79%, Horse: 93%, Human: 100%, Mouse: 86%, Pig: 86%, Rabbit: 93%, Rat: 86%
Characteristics:	This is a rabbit polyclonal antibody against GPR161. It was validated on Western Blot and immunohistochemistry.
Purification:	Protein A purified

Target Details

Target:	GPR161
---------	--------

Target Details

Alternative Name:	GPR161 (GPR161 Products)
Background:	GPR161 is orphan receptor. Alias Symbols: FLJ33952, RE2 Protein Interaction Partner: PRKACA, Protein Size: 529
Molecular Weight:	58 kDa
Gene ID:	23432
NCBI Accession:	NM_153832 , NP_722561
UniProt:	Q8N6U8
Pathways:	cAMP Metabolic Process

Application Details

Application Notes:	Optimal working dilutions should be determined experimentally by the investigator.
Comment:	Antigen size: 529 AA
Restrictions:	For Research Use only

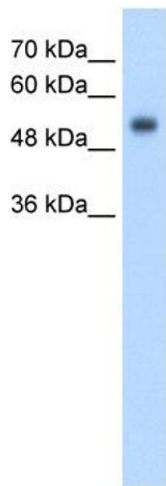
Handling

Format:	Liquid
Concentration:	Lot specific
Buffer:	Liquid. Purified antibody supplied in 1x PBS buffer with 0.09 % (w/v) sodium azide and 2 % sucrose.
Preservative:	Sodium azide
Precaution of Use:	This product contains Sodium azide: a POISONOUS AND HAZARDOUS SUBSTANCE which should be handled by trained staff only.
Handling Advice:	Avoid repeated freeze-thaw cycles.
Storage:	-20 °C
Storage Comment:	For short term use, store at 2-8°C up to 1 week. For long term storage, store at -20°C in small aliquots to prevent freeze-thaw cycles.

Publications

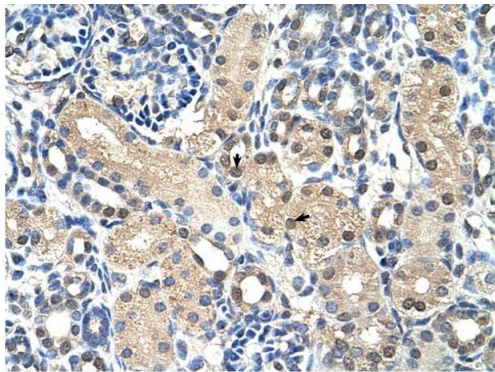
Product cited in: Small, Seman, Castator, Brown, Liggett: "False positive non-synonymous polymorphisms of G-protein coupled receptor genes." in: **FEBS letters**, Vol. 516, Issue 1-3, pp. 253-6, (2002) ([PubMed](#)).

Images



Western Blotting

Image 1. WB Suggested Anti-GPR161 Antibody Titration: 2.5ug/ml Positive Control: HepG2 cell lysate



Rabbit Anti-GPR161 Antibody
Catalog Number: ARP42353
Lot Number: QC12824
Paraffin Embedded Tissue: Human Kidney
Cells with Positive label: Epithelial cells of renal tubule (Indicated with Arrows)
Antibody Concentration: 4.0-8.0 µg/ml
Magnification: 400X

Immunohistochemistry

Image 2. Rabbit Anti-GPR161 Antibody Paraffin Embedded Tissue: Human Kidney Cellular Data: Epithelial cells of renal tubule Antibody Concentration: 4.0-8.0 ug/ml Magnification: 400X