



Datasheet for ABIN2775393

anti-C-Type Lectin Domain Family 4, Member M (CLEC4M) (N-Term) antibody



[Go to Product page](#)

2 Images

Overview

Quantity:	100 µL
Target:	C-Type Lectin Domain Family 4, Member M (CLEC4M)
Binding Specificity:	N-Term
Reactivity:	Human, Pig
Host:	Rabbit
Clonality:	Polyclonal
Conjugate:	Un-conjugated
Application:	Western Blotting (WB), Immunohistochemistry (IHC)

Product Details

Immunogen:	The immunogen is a synthetic peptide directed towards the N terminal region of human CLEC4M
Sequence:	LVLQLLSFML LAGVLVAILV QVSKVPSSLS QEQSEQDAIY QNLTQLKAAV
Predicted Reactivity:	Human: 100%, Pig: 86%
Characteristics:	This is a rabbit polyclonal antibody against CLEC4M. It was validated on Western Blot and immunohistochemistry.
Purification:	Protein A purified

Target Details

Target:	C-Type Lectin Domain Family 4, Member M (CLEC4M)
---------	--

Target Details

Alternative Name: CLEC4M ([CLEC4M Products](#))

Background: CLEC4M is a type II integral membrane protein that is 77 % identical to CD209 antigen, a HIV gp120-binding protein. This protein, like CD209, efficiently binds both intercellular adhesion molecule 3 (ICAM3) and HIV-1 gp120, and enhances HIV-1 infection of T cells. Western blots using two different antibodies against two unique regions of this protein target confirm the same apparent molecular weight in our tests. This gene encodes a type II integral membrane protein that is 77 % identical to CD209 antigen, a HIV gp120-binding protein. This protein, like CD209, efficiently binds both intercellular adhesion molecule 3 (ICAM3) and HIV-1 gp120, and enhances HIV-1 infection of T cells. This gene is mapped to 19p13.3, in a cluster with the CD209 and CD23/FCER2 genes. Multiple alternatively spliced transcript variants have been found for this gene, but the biological validity of some variants has not been determined.

Alias Symbols: CD209L, CD299, DC-SIGN2, DC-SIGNR, DCSIGNR, HP10347, L-SIGN, LSIGN, MGC129964, MGC47866

Protein Interaction Partner: TLR2, MME, CLEC4M, CD209, ICAM3, ITGAM, AP2M1, HCVgp1, Protein Size: 399

Molecular Weight: 44 kDa

Gene ID: 10332

NCBI Accession: [NM_014257](#), [NP_055072](#)

UniProt: [Q9H2X3](#)

Application Details

Application Notes: Optimal working dilutions should be determined experimentally by the investigator.

Comment: Antigen size: 399 AA

Restrictions: For Research Use only

Handling

Format: Liquid

Concentration: Lot specific

Buffer: Liquid. Purified antibody supplied in 1x PBS buffer with 0.09 % (w/v) sodium azide and 2 % sucrose.

Preservative: Sodium azide

Handling

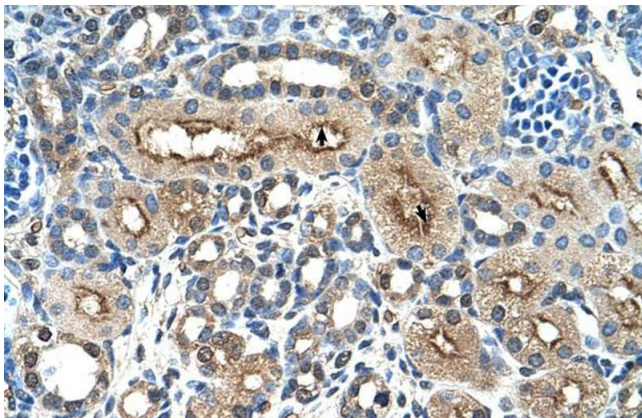
Precaution of Use:	This product contains Sodium azide: a POISONOUS AND HAZARDOUS SUBSTANCE which should be handled by trained staff only.
Handling Advice:	Avoid repeated freeze-thaw cycles.
Storage:	-20 °C
Storage Comment:	For short term use, store at 2-8°C up to 1 week. For long term storage, store at -20°C in small aliquots to prevent freeze-thaw cycles.

Images



Western Blotting

Image 1. WB Suggested Anti-CLEC4M Antibody Titration:
1.25ug/ml Positive Control: HepG2 cell lysate



Immunohistochemistry

Image 2. Human kidney