



[Go to Product page](#)

Datasheet for ABIN2775397

## anti-EIF2AK1 antibody (N-Term)

### 5 Images

#### Overview

Quantity:	100 µL
Target:	EIF2AK1
Binding Specificity:	N-Term
Reactivity:	Human, Mouse, Rat, Cow, Dog, Guinea Pig, Horse, Rabbit, Zebrafish (Danio rerio)
Host:	Rabbit
Clonality:	Polyclonal
Conjugate:	This EIF2AK1 antibody is un-conjugated
Application:	Western Blotting (WB), Immunohistochemistry (IHC)

#### Product Details

Immunogen:	The immunogen is a synthetic peptide directed towards the N terminal region of human EIF2AK1
Sequence:	TCSDEFSSLR LHHNRAITHL MRSAKERVRQ DPCEDISRIQ KIRSREVALE
Predicted Reactivity:	Cow: 100%, Dog: 100%, Guinea Pig: 100%, Horse: 100%, Human: 100%, Mouse: 100%, Rabbit: 100%, Rat: 100%, Zebrafish: 79%
Characteristics:	This is a rabbit polyclonal antibody against EIF2AK1. It was validated on Western Blot using a cell lysate as a positive control.
Purification:	Affinity Purified

#### Target Details

Target:	EIF2AK1
---------	---------

## Target Details

---

Alternative Name:	<a href="#">EIF2AK1 (EIF2AK1 Products)</a>
Background:	<p>EIF2AK1 acts at the level of translation initiation to downregulate protein synthesis in response to stress. The protein is a kinase that can be inactivated by hemein. Two transcript variants encoding different isoforms have been found for this gene. The HRI gene is localized to 7p22 where its 3' end slightly overlaps the 3' end of the gene JTV1. The two genes are transcribed from opposite strands. Studies in rat and rabbit suggest that the HRI gene product phosphorylates the alpha subunit of eukaryotic initiation factor 2. Its kinase activity is induced by low levels of heme and inhibited by the presence of heme. Sequence Note: The sequence AF181071.1 is a chimeric mRNA clone. Only the heme-regulated initiation factor 2-alpha kinase region was propagated into this RefSeq record.</p> <p>Alias Symbols: HRI, KIAA1369, HCR</p> <p>Protein Interaction Partner: MDM2, UBC, HSP90AA1, LIG4, CDC37, EIF2AK1, EIF2S1,</p> <p>Protein Size: 630</p>
Molecular Weight:	71 kDa
Gene ID:	27102
NCBI Accession:	<a href="#">NM_014413, NP_055228</a>
UniProt:	<a href="#">Q9BQI3</a>
Pathways:	<a href="#">Hepatitis C</a>

## Application Details

---

Application Notes:	Optimal working dilutions should be determined experimentally by the investigator.
Comment:	Antigen size: 630 AA
Restrictions:	For Research Use only

## Handling

---

Format:	Liquid
Concentration:	Lot specific
Buffer:	Liquid. Purified antibody supplied in 1x PBS buffer with 0.09 % (w/v) sodium azide and 2 % sucrose.
Preservative:	Sodium azide
Precaution of Use:	This product contains Sodium azide: a POISONOUS AND HAZARDOUS SUBSTANCE which

## Handling

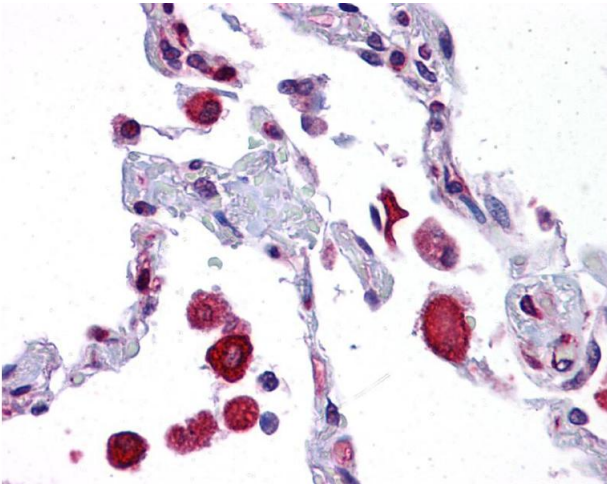
should be handled by trained staff only.

Handling Advice: Avoid repeated freeze-thaw cycles.

Storage: -20 °C

Storage Comment: For short term use, store at 2-8°C up to 1 week. For long term storage, store at -20°C in small aliquots to prevent freeze-thaw cycles.

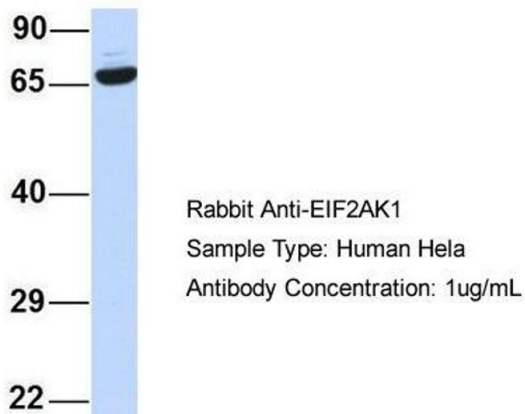
## Images



### Immunohistochemistry

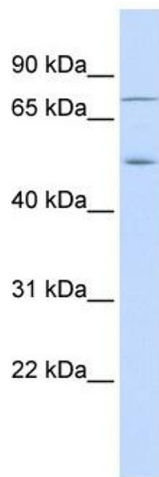
**Image 1.**

### EIF2AK1



### Western Blotting

**Image 2.** Host: Rabbit Target Name: EIF2AK1 Sample Type: Human HeLa Antibody Dilution: 1.0µg/ml EIF2AK1 is strongly supported by BioGPS gene expression data to be expressed in HeLa



### Western Blotting

**Image 3.** WB Suggested Anti-EIF2AK1 Antibody Titration: 0.2-1 ug/ml ELISA Titer: 1:62500 Positive Control: Human Lung

Please check the [product details page](#) for more images. Overall 5 images are available for ABIN2775397.