



[Go to Product page](#)

Datasheet for ABIN2775409
anti-COBLL1 antibody (N-Term)

3 Images

Overview

Quantity:	100 µL
Target:	COBLL1
Binding Specificity:	N-Term
Reactivity:	Human, Dog, Rabbit, Mouse, Rat, Cow, Guinea Pig, Horse
Host:	Rabbit
Clonality:	Polyclonal
Conjugate:	This COBLL1 antibody is un-conjugated
Application:	Western Blotting (WB), Immunohistochemistry (IHC)

Product Details

Immunogen:	The immunogen is a synthetic peptide directed towards the N terminal region of human COBLL1
Sequence:	SAPATPLVNK HRPTFTRSNT ISKPYISNTL PSDAPKKRRA PLPPMPASQS
Predicted Reactivity:	Cow: 100%, Dog: 100%, Guinea Pig: 100%, Horse: 100%, Human: 100%, Mouse: 100%, Rabbit: 100%, Rat: 100%
Characteristics:	This is a rabbit polyclonal antibody against COBLL1. It was validated on Western Blot and immunohistochemistry.
Purification:	Affinity Purified

Target Details

Target:	COBLL1
---------	--------

Target Details

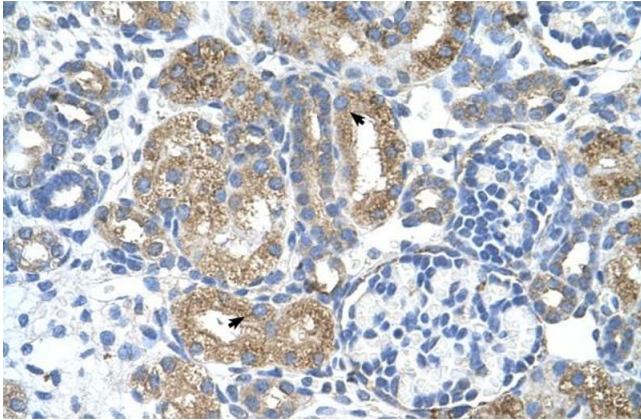
Alternative Name:	COBLL1 (COBLL1 Products)
Background:	The function remains known. Alias Symbols: KIAA0977, COBLR1 Protein Interaction Partner: NRD1, PACSIN1, Protein Size: 1166
Molecular Weight:	128 kDa
Gene ID:	22837
NCBI Accession:	NM_014900 , NP_055715
UniProt:	A6NMZ3

Application Details

Application Notes:	Optimal working dilutions should be determined experimentally by the investigator.
Comment:	Antigen size: 1166 AA
Restrictions:	For Research Use only

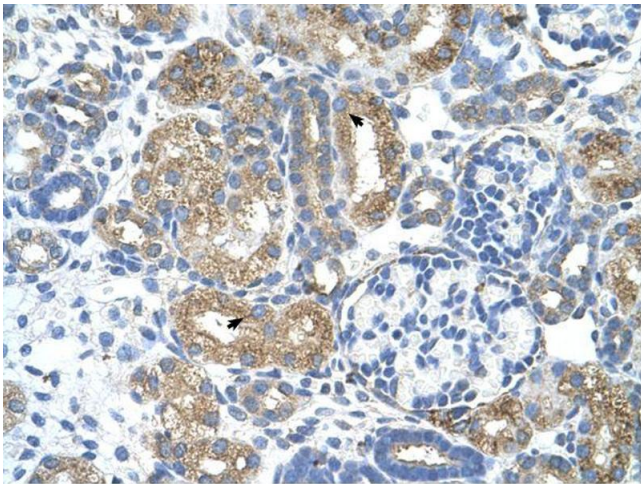
Handling

Format:	Liquid
Concentration:	Lot specific
Buffer:	Liquid. Purified antibody supplied in 1x PBS buffer with 0.09 % (w/v) sodium azide and 2 % sucrose.
Preservative:	Sodium azide
Precaution of Use:	This product contains Sodium azide: a POISONOUS AND HAZARDOUS SUBSTANCE which should be handled by trained staff only.
Handling Advice:	Avoid repeated freeze-thaw cycles.
Storage:	-20 °C
Storage Comment:	For short term use, store at 2-8°C up to 1 week. For long term storage, store at -20°C in small aliquots to prevent freeze-thaw cycles.



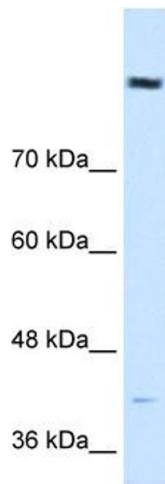
Immunohistochemistry

Image 1. Human kidney



Immunohistochemistry

Image 2.



Western Blotting

Image 3. WB Suggested Anti-COBL1 Antibody Titration: 0.5ug/ml Positive Control: HepG2 cell lysate COBL1 is strongly supported by BioGPS gene expression data to be expressed in Human HepG2 cells