



[Go to Product page](#)

Datasheet for ABIN2775414

anti-Exophilin 5 antibody (Middle Region)

2 Images

Overview

Quantity:	100 µL
Target:	Exophilin 5 (EXPH5)
Binding Specificity:	Middle Region
Reactivity:	Human, Cow, Dog, Horse, Rabbit, Rat
Host:	Rabbit
Clonality:	Polyclonal
Conjugate:	This Exophilin 5 antibody is un-conjugated
Application:	Western Blotting (WB)

Product Details

Immunogen:	The immunogen is a synthetic peptide directed towards the middle region of human EXPH5
Sequence:	QGRLWKPSFL KNPGFLKDDL RNPPNPSESL SSNSPSSQVP EDGLSPSEPL
Predicted Reactivity:	Cow: 86%, Dog: 79%, Horse: 86%, Human: 100%, Rabbit: 79%, Rat: 92%
Characteristics:	This is a rabbit polyclonal antibody against EXPH5. It was validated on Western Blot using a cell lysate as a positive control.
Purification:	Affinity Purified

Target Details

Target:	Exophilin 5 (EXPH5)
Alternative Name:	EXPH5 (EXPH5 Products)

Target Details

Background: The function of this protein remains unknown.
Alias Symbols: DKFZp781H0795, KIAA0624, MGC133291, MGC134967, SLAC2-B, SLAC2B
Protein Interaction Partner: SMAD9, ELAVL1, UBC, APC, RAB27A,
Protein Size: 1989

Molecular Weight: 222 kDa

Gene ID: 23086

NCBI Accession: [NM_015065](#), [NP_055880](#)

UniProt: [Q149M6](#)

Application Details

Application Notes: Optimal working dilutions should be determined experimentally by the investigator.

Comment: Antigen size: 1989 AA

Restrictions: For Research Use only

Handling

Format: Liquid

Concentration: Lot specific

Buffer: Liquid. Purified antibody supplied in 1x PBS buffer with 0.09 % (w/v) sodium azide and 2 % sucrose.

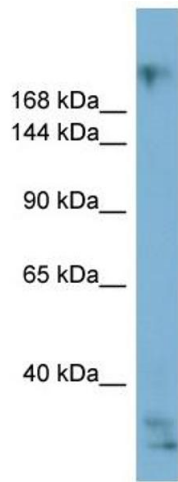
Preservative: Sodium azide

Precaution of Use: This product contains Sodium azide: a POISONOUS AND HAZARDOUS SUBSTANCE which should be handled by trained staff only.

Handling Advice: Avoid repeated freeze-thaw cycles.

Storage: -20 °C

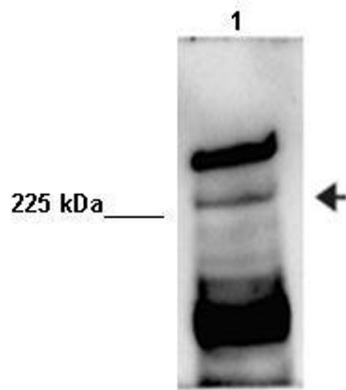
Storage Comment: For short term use, store at 2-8°C up to 1 week. For long term storage, store at -20°C in small aliquots to prevent freeze-thaw cycles.



Western Blotting

Image 1. WB Suggested Anti-EXPH5 Antibody Titration: 0.2-1 ug/ml ELISA Titer: 1:312500 Positive Control: ACHN cell lysate

EXPH5



Western Blotting

Image 2. Human sperm extract