

Datasheet for ABIN2775417
anti-PSD3 antibody (Middle Region)[Go to Product page](#)

2 Images

Overview

Quantity:	100 µL
Target:	PSD3
Binding Specificity:	Middle Region
Reactivity:	Human, Mouse, Rat, Cow, Rabbit, Dog, Guinea Pig, Horse, Zebrafish (Danio rerio)
Host:	Rabbit
Clonality:	Polyclonal
Conjugate:	This PSD3 antibody is un-conjugated
Application:	Western Blotting (WB), Immunohistochemistry (IHC)

Product Details

Immunogen:	The immunogen is a synthetic peptide directed towards the middle region of human PSD3
Sequence:	SDVAKHLGKN NEFSKLVAEE YLKFFDFTGM TLDQSLRYFF KAFSLVGETQ
Predicted Reactivity:	Cow: 100%, Dog: 100%, Guinea Pig: 100%, Horse: 100%, Human: 100%, Mouse: 100%, Rabbit: 100%, Rat: 100%, Zebrafish: 93%
Characteristics:	This is a rabbit polyclonal antibody against PSD3. It was validated on Western Blot and immunohistochemistry.
Purification:	Protein A purified

Target Details

Target:	PSD3
---------	------

Target Details

Alternative Name:	PSD3 (PSD3 Products)
Background:	PSD3 is a guanine nucleotide exchange factor for ARF6. Alias Symbols: DKFZp761K1423, EFA6R, HCA67 Protein Interaction Partner: UBC, ARAP1, PMS2, MLH1, Protein Size: 513
Molecular Weight:	56 kDa
Gene ID:	23362
NCBI Accession:	NM_206909 , NP_996792

Application Details

Application Notes:	Optimal working dilutions should be determined experimentally by the investigator.
Comment:	Antigen size: 513 AA
Restrictions:	For Research Use only

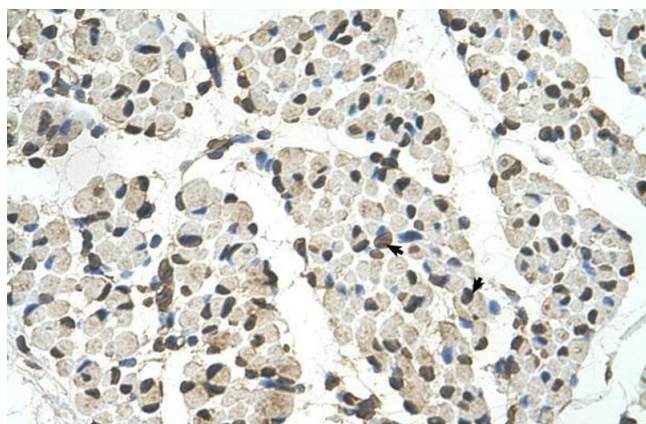
Handling

Format:	Liquid
Concentration:	Lot specific
Buffer:	Liquid. Purified antibody supplied in 1x PBS buffer with 0.09 % (w/v) sodium azide and 2 % sucrose.
Preservative:	Sodium azide
Precaution of Use:	This product contains Sodium azide: a POISONOUS AND HAZARDOUS SUBSTANCE which should be handled by trained staff only.
Handling Advice:	Avoid repeated freeze-thaw cycles.
Storage:	-20 °C
Storage Comment:	For short term use, store at 2-8°C up to 1 week. For long term storage, store at -20°C in small aliquots to prevent freeze-thaw cycles.



Western Blotting

Image 1. WB Suggested Anti-PSD3 Antibody Titration: 2.5ug/ml Positive Control: A204 cell lysate PSD3 is strongly supported by BioGPS gene expression data to be expressed in Human A204 cells



Immunohistochemistry

Image 2. Human Muscle