

Datasheet for ABIN2775429
anti-CBR2 antibody (N-Term)[Go to Product page](#)

1 Image

Overview

Quantity:	100 µL
Target:	CBR2
Binding Specificity:	N-Term
Reactivity:	Cow, Dog, Guinea Pig, Horse, Human, Mouse, Rat
Host:	Rabbit
Clonality:	Polyclonal
Conjugate:	This CBR2 antibody is un-conjugated
Application:	Western Blotting (WB)

Product Details

Immunogen:	The immunogen is a synthetic peptide directed towards the N-terminal region of Mouse Cbr2
Sequence:	VCVDLGWDWA TEKALGGIGP VDLLVNNAAL VIMQPFLEVT KEAFDRSFSV
Predicted Reactivity:	Cow: 92%, Dog: 100%, Guinea Pig: 100%, Horse: 92%, Human: 100%, Mouse: 100%, Rat: 100%
Characteristics:	This is a rabbit polyclonal antibody against Cbr2. It was validated on Western Blot.
Purification:	Affinity Purified

Target Details

Target:	CBR2
Alternative Name:	Cbr2 (CBR2 Products)
Background:	Cbr2 may function in the pulmonary metabolism of endogenous carbonyl compounds, such as

Target Details

aliphatic aldehydes and ketones derived from lipid peroxidation, 3-ketosteroids and fatty aldehydes, as well as in xenobiotic metabolism.

Alias Symbols: MLCR

Protein Size: 244

Molecular Weight: 26 kDa

Gene ID: 12409

NCBI Accession: [NM_007621](#), [NP_031647](#)

UniProt: [P08074](#)

Application Details

Application Notes: Optimal working dilutions should be determined experimentally by the investigator.

Comment: Antigen size: 244 AA

Restrictions: For Research Use only

Handling

Format: Liquid

Concentration: Lot specific

Buffer: Liquid. Purified antibody supplied in 1x PBS buffer with 0.09 % (w/v) sodium azide and 2 % sucrose.

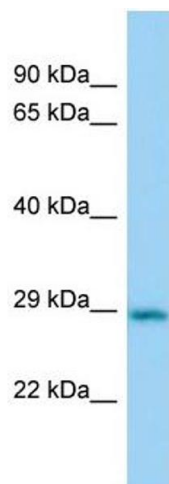
Preservative: Sodium azide

Precaution of Use: This product contains Sodium azide: a POISONOUS AND HAZARDOUS SUBSTANCE which should be handled by trained staff only.

Handling Advice: Avoid repeated freeze-thaw cycles.

Storage: -20 °C

Storage Comment: For short term use, store at 2-8°C up to 1 week. For long term storage, store at -20°C in small aliquots to prevent freeze-thaw cycles.



Western Blotting

Image 1. Host: Rabbit Target Name: Cbr2 Sample Type: Mouse Lung lysates Antibody Dilution: 1.0ug/ml