

Datasheet for ABIN2775441
anti-FAM46A antibody (N-Term)



[Go to Product page](#)

2 Images

Overview

Quantity:	100 µL
Target:	FAM46A
Binding Specificity:	N-Term
Reactivity:	Human, Mouse, Horse, Rat, Pig, Saccharomyces cerevisiae, Zebrafish (Danio rerio)
Host:	Rabbit
Clonality:	Polyclonal
Conjugate:	This FAM46A antibody is un-conjugated
Application:	Western Blotting (WB)

Product Details

Immunogen:	The immunogen is a synthetic peptide directed towards the N terminal region of human FAM46A
Sequence:	MAEGEGYFAM SEDELACSPY IPLGGDFGGG DFGGGDFGGG DFGGGGSFGG
Predicted Reactivity:	Horse: 92%, Human: 100%, Mouse: 92%, Pig: 92%, Rat: 100%, Yeast: 100%, Zebrafish: 83%
Characteristics:	This is a rabbit polyclonal antibody against FAM46A. It was validated on Western Blot using a cell lysate as a positive control.
Purification:	Affinity Purified

Target Details

Target:	FAM46A
---------	--------

Target Details

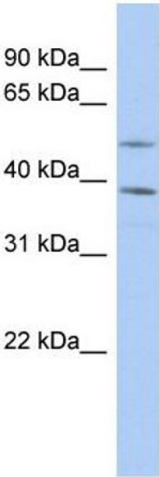
Alternative Name:	FAM46A (FAM46A Products)
Background:	<p>The specific function of the protein remains unknown.</p> <p>Alias Symbols: C6orf37, FLJ20037, FLJ31495, XTP11</p> <p>Protein Interaction Partner: UBC, EGLN2, BCCIP, CD93, KEAP1, RNF14, TBX4, ZFYVE9, BAG6, NR2F2, SPINT1, ATXN1, PSG3, HTRA1, HDLBP, DYNC1H1, COL4A2, ELAVL1,</p> <p>Protein Size: 442</p>
Molecular Weight:	50 kDa
Gene ID:	55603
NCBI Accession:	NM_017633 , NP_060103
UniProt:	Q96IP4

Application Details

Application Notes:	Optimal working dilutions should be determined experimentally by the investigator.
Comment:	Antigen size: 442 AA
Restrictions:	For Research Use only

Handling

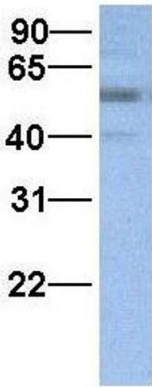
Format:	Liquid
Concentration:	Lot specific
Buffer:	Liquid. Purified antibody supplied in 1x PBS buffer with 0.09 % (w/v) sodium azide and 2 % sucrose.
Preservative:	Sodium azide
Precaution of Use:	This product contains Sodium azide: a POISONOUS AND HAZARDOUS SUBSTANCE which should be handled by trained staff only.
Handling Advice:	Avoid repeated freeze-thaw cycles.
Storage:	-20 °C
Storage Comment:	For short term use, store at 2-8°C up to 1 week. For long term storage, store at -20°C in small aliquots to prevent freeze-thaw cycles.



Western Blotting

Image 1. WB Suggested Anti-FAM46A Antibody Titration:
0.2-1 ug/ml ELISA Titer: 1:312500 Positive Control: PANC1
cell lysate

FAM46A



Rabbit Anti-FAM46A
Sample Type: Human Fetal Lung
Antibody Concentration: 1ug/mL

Western Blotting

Image 2. Host: Rabbit Target Name: FAM46A Sample Type:
Human Fetal Lung Antibody Dilution: 1.0ug/ml