

Datasheet for ABIN2775452  
**anti-SLC38A4 antibody (Middle Region)**[Go to Product page](#)

## 2 Images

## Overview

Quantity:	100 µL
Target:	SLC38A4
Binding Specificity:	Middle Region
Reactivity:	Human, Mouse, Rat, Dog, Zebrafish (Danio rerio), Cow, Guinea Pig, Horse, Pig, Rabbit
Host:	Rabbit
Clonality:	Polyclonal
Conjugate:	This SLC38A4 antibody is un-conjugated
Application:	Western Blotting (WB), Immunohistochemistry (IHC)

## Product Details

Immunogen:	The immunogen is a synthetic peptide directed towards the middle region of human SLC38A4
Sequence:	LAALFGYLTF YGEVEDELLH AYSKVYTLDI PLLMVRLAVL VAVTLTVPIV
Predicted Reactivity:	Cow: 100%, Dog: 100%, Guinea Pig: 92%, Horse: 92%, Human: 100%, Mouse: 100%, Pig: 100%, Rabbit: 92%, Rat: 100%, Zebrafish: 90%
Characteristics:	This is a rabbit polyclonal antibody against SLC38A4. It was validated on Western Blot and immunohistochemistry.
Purification:	Protein A purified

## Target Details

Target:	SLC38A4
---------	---------

## Target Details

Alternative Name:	SLC38A4 ( <a href="#">SLC38A4 Products</a> )
Background:	<p>SLC38A4 is found predominantly in liver and transports both cationic and neutral amino acids. The transport of cationic amino acids by SLC38A4 is Na(+) and pH independent, while the transport of neutral amino acids is Na(+) and pH dependent. The modification of proteins with ubiquitin is an important cellular mechanism for targeting abnormal or short-lived proteins for degradation. Ubiquitination involves at least three classes of enzymes: ubiquitin-activating enzymes, or E1s, ubiquitin-conjugating enzymes, or E2s, and ubiquitin-protein ligases, or E3s. This gene encodes a member of the E2 ubiquitin-conjugating enzyme family. Four alternatively spliced transcript variants encoding the same protein have been found for this gene.</p> <p>Alias Symbols: ATA3, FLJ10191, MGC126876, NAT3, PAAT</p> <p>Protein Size: 158</p>
Molecular Weight:	17 kDa
Gene ID:	55089
NCBI Accession:	<a href="#">NM_003345</a> , <a href="#">NP_060488</a>
UniProt:	<a href="#">Q969I6</a>

## Application Details

Application Notes:	Optimal working dilutions should be determined experimentally by the investigator.
Comment:	Antigen size: 158 AA
Restrictions:	For Research Use only

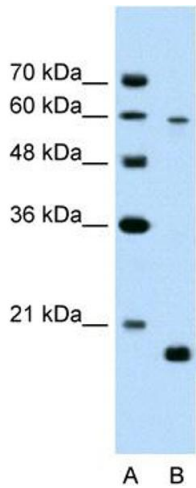
## Handling

Format:	Liquid
Concentration:	Lot specific
Buffer:	Liquid. Purified antibody supplied in 1x PBS buffer with 0.09 % (w/v) sodium azide and 2 % sucrose.
Preservative:	Sodium azide
Precaution of Use:	This product contains Sodium azide: a POISONOUS AND HAZARDOUS SUBSTANCE which should be handled by trained staff only.
Handling Advice:	Avoid repeated freeze-thaw cycles.

Handling

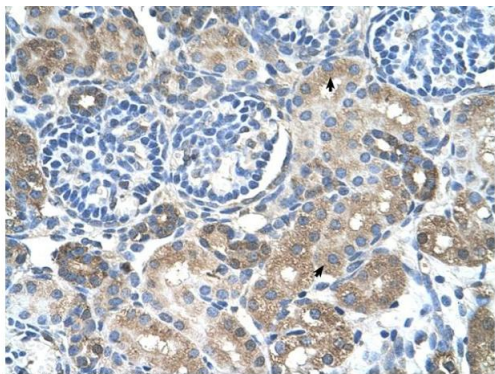
Storage:	-20 °C
Storage Comment:	For short term use, store at 2-8°C up to 1 week. For long term storage, store at -20°C in small aliquots to prevent freeze-thaw cycles.

Images



Western Blotting

**Image 1.** WB Suggested Anti-SLC38A4 Antibody Titration:  
2.5ug/ml Positive Control: Jurkat cell lysate



Immunohistochemistry

**Image 2.**

Rabbit Anti-SLC38A4 Antibody  
Catalog Number: ARP42504  
Lot Number: QC13355  
Paraffin Embedded Tissue: Human Kidney  
Cells with Positive label: Epithelial cells of renal tubule (Indicated with Arrows)  
Antibody Concentration: 4.0-8.0 µg/ml  
Magnification: 400X