



[Go to Product page](#)

Datasheet for ABIN2775453

anti-ANO1 antibody (Middle Region)

3 Images

2 Publications

Overview

Quantity:	100 µL
Target:	ANO1
Binding Specificity:	Middle Region
Reactivity:	Human, Mouse, Rat, Cow, Dog, Guinea Pig, Horse, Rabbit
Host:	Rabbit
Clonality:	Polyclonal
Conjugate:	This ANO1 antibody is un-conjugated
Application:	Western Blotting (WB)

Product Details

Immunogen:	The immunogen is a synthetic peptide directed towards the middle region of human TMEM16A
Sequence:	HGFVNHTLSS FNVSDFQNGT APNDPLDLGY EVQICRYKDY REPPWSENKY
Predicted Reactivity:	Cow: 100%, Dog: 100%, Guinea Pig: 100%, Horse: 100%, Human: 100%, Mouse: 100%, Rabbit: 79%, Rat: 100%
Characteristics:	This is a rabbit polyclonal antibody against TMEM16A. It was validated on Western Blot using a cell lysate as a positive control.
Purification:	Affinity Purified

Target Details

Target:	ANO1
---------	------

Target Details

Alternative Name:	TMEM16A (ANO1 Products)
Background:	<p>TMEM16A belongs to the anoctamin family. TMEM16A acts as a calcium-activated chloride channel. It is required for normal tracheal development.</p> <p>Alias Symbols: FLJ10261, ORAOV2, TAOS2, CACC, DOG1, TMEM16A, ANO1</p> <p>Protein Interaction Partner: UBC,</p> <p>Protein Size: 960</p>
Molecular Weight:	111 kDa
Gene ID:	55107
NCBI Accession:	NM_018043 , NP_060513
UniProt:	Q5XXA6

Application Details

Application Notes:	Optimal working dilutions should be determined experimentally by the investigator.
Comment:	Antigen size: 960 AA
Restrictions:	For Research Use only

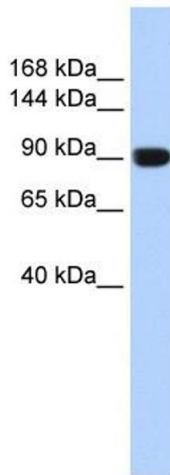
Handling

Format:	Liquid
Concentration:	Lot specific
Buffer:	Liquid. Purified antibody supplied in 1x PBS buffer with 0.09 % (w/v) sodium azide and 2 % sucrose.
Preservative:	Sodium azide
Precaution of Use:	This product contains Sodium azide: a POISONOUS AND HAZARDOUS SUBSTANCE which should be handled by trained staff only.
Handling Advice:	Avoid repeated freeze-thaw cycles.
Storage:	-20 °C
Storage Comment:	For short term use, store at 2-8°C up to 1 week. For long term storage, store at -20°C in small aliquots to prevent freeze-thaw cycles.

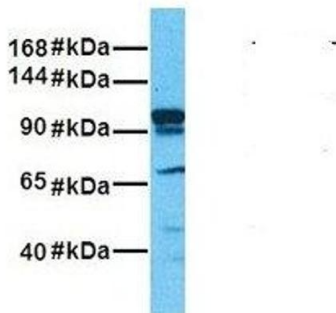
Publications

Product cited in: Ewing, Chu, Elisma, Li, Taylor, Climie, McBroom-Cerajewski, Robinson, OConnor, Li, Taylor, Dharsee, Ho, Heilbut, Moore, Zhang, Ornatsky, Bukhman, Ethier, Sheng, Vasilescu, Abu-Farha, Lambert, Duewel et al.: "Large-scale mapping of human protein-protein interactions by mass spectrometry. ..." in: **Molecular systems biology**, Vol. 3, pp. 89, (2007) ([PubMed](#)).

Images



TMEM16A

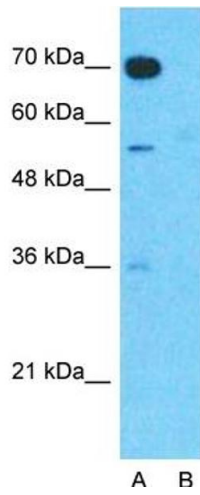


Western Blotting

Image 1. WB Suggested Anti-TMEM16A Antibody Titration: 0.2-1 ug/ml ELISA Titer: 1:1562500 Positive Control: Human Muscle

Western Blotting

Image 2. Host: Rabbit Target Name: TMEM16A Sample Tissue: Human Fetal Liver Antibody Dilution: 1.0ug/ml



Western Blotting

Image 3. Host: Rabbit Target Name: TMEM16A Sample Type: Human Fetal Muscle Lane A: Primary Antibody Lane B: Primary Antibody + Blocking Peptide Primary Antibody Concentration: 1ug/ml Peptide Concentration: 5ug/ml Lysate Quantity: 25ug/lane/lane Gel Concentration: 0.12