



[Go to Product page](#)

Datasheet for ABIN2775454
anti-BSDC1 antibody (N-Term)

2 Images

1 Publication

Overview

Quantity:	100 µL
Target:	BSDC1
Binding Specificity:	N-Term
Reactivity:	Human, Mouse, Dog, Cow, Guinea Pig, Horse, Rabbit, Rat
Host:	Rabbit
Clonality:	Polyclonal
Conjugate:	This BSDC1 antibody is un-conjugated
Application:	Western Blotting (WB), Immunohistochemistry (IHC)

Product Details

Immunogen:	The immunogen is a synthetic peptide directed towards the N terminal region of human BSDC1
Sequence:	VISDTFAPSP DKTIDCDVIT LMGTPSGTAE PYDGTKARLY SLQSDPATYC
Predicted Reactivity:	Cow: 100%, Dog: 93%, Guinea Pig: 100%, Horse: 100%, Human: 100%, Mouse: 100%, Rabbit: 100%, Rat: 100%
Characteristics:	This is a rabbit polyclonal antibody against BSDC1. It was validated on Western Blot and immunohistochemistry.
Purification:	Protein A purified

Target Details

Target:	BSDC1
---------	-------

Target Details

Alternative Name:	BSDC1 (BSDC1 Products)
Background:	<p>The function remains unknown. The modification of proteins with ubiquitin is an important cellular mechanism for targeting abnormal or short-lived proteins for degradation.</p> <p>Ubiquitination involves at least three classes of enzymes: ubiquitin-activating enzymes (E1s), ubiquitin-conjugating enzymes (E2s) and ubiquitin-protein ligases (E3s). This gene encodes a member of the E2 ubiquitin-conjugating enzyme family. This enzyme is demonstrated to participate in the ubiquitination of p53, c-Fos, and the NF-κB precursor p105 in vitro. Two alternatively spliced transcript variants encoding distinct isoforms have been found for this gene.</p> <p>Alias Symbols: RP4-811H24.7, DKFZp686B09139, FLJ10276</p> <p>Protein Interaction Partner: KLC1, UBC, Bsd1, PHC2,</p> <p>Protein Size: 154</p>
Molecular Weight:	17 kDa
Gene ID:	55108
NCBI Accession:	NM_003347 , NP_060515

Application Details

Application Notes:	Optimal working dilutions should be determined experimentally by the investigator.
Comment:	Antigen size: 154 AA
Restrictions:	For Research Use only

Handling

Format:	Liquid
Concentration:	Lot specific
Buffer:	Liquid. Purified antibody supplied in 1x PBS buffer with 0.09 % (w/v) sodium azide and 2 % sucrose.
Preservative:	Sodium azide
Precaution of Use:	This product contains Sodium azide: a POISONOUS AND HAZARDOUS SUBSTANCE which should be handled by trained staff only.
Handling Advice:	Avoid repeated freeze-thaw cycles.
Storage:	-20 °C

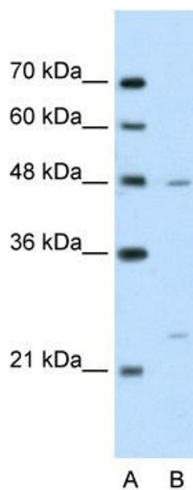
Handling

Storage Comment: For short term use, store at 2-8°C up to 1 week. For long term storage, store at -20°C in small aliquots to prevent freeze-thaw cycles.

Publications

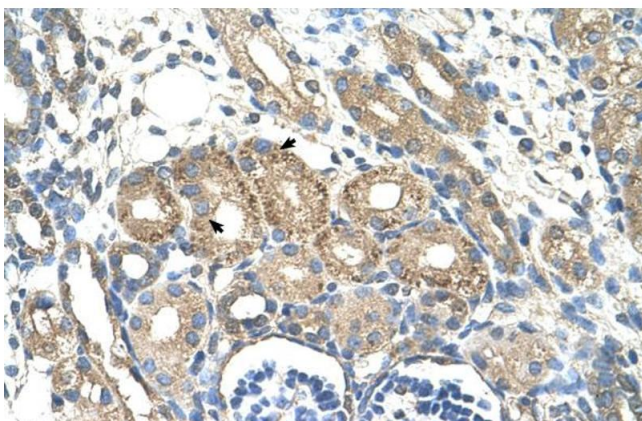
Product cited in: Tordjman, Leroyer, Chauvet, Quette, Chauvet, Tomkiewicz, Chapron, Barouki, Forest, Aggerbeck, Antoine: "Cytosolic aspartate aminotransferase, a new partner in adipocyte glyceroneogenesis and an atypical target of thiazolidinedione." in: **The Journal of biological chemistry**, Vol. 282, Issue 32, pp. 23591-602, (2007) ([PubMed](#)).

Images



Western Blotting

Image 1. WB Suggested Anti-BSDC1 Antibody Titration: 2.5ug/ml Positive Control: Jurkat cell lysate



Immunohistochemistry

Image 2. Human kidney