



[Go to Product page](#)

Datasheet for ABIN2775458  
**anti-C4orf19 antibody (N-Term)**

2 Images

Overview

Quantity:	100 µL
Target:	C4orf19
Binding Specificity:	N-Term
Reactivity:	Human, Mouse, Rat, Horse, Pig, Cow, Dog, Guinea Pig, Rabbit
Host:	Rabbit
Clonality:	Polyclonal
Conjugate:	This C4orf19 antibody is un-conjugated
Application:	Western Blotting (WB)

Product Details

Immunogen:	The immunogen is a synthetic peptide directed towards the N terminal region of human C4orf19
Sequence:	MGCRCKIIQ SYLFDPVQVP SPGYVNEVNS CKLDEDDTDK LKGKWSSEVL
Predicted Reactivity:	Cow: 93%, Dog: 93%, Guinea Pig: 79%, Horse: 100%, Human: 100%, Mouse: 93%, Pig: 100%, Rabbit: 93%, Rat: 93%
Characteristics:	This is a rabbit polyclonal antibody against C4orf19. It was validated on Western Blot.
Purification:	Affinity Purified

Target Details

Target:	C4orf19
---------	---------

## Target Details

---

Alternative Name:	C4orf19 ( <a href="#">C4orf19 Products</a> )
Background:	The function of C4orf19 remains unknown. Alias Symbols: FLJ11017 Protein Interaction Partner: PDCD10, EIF3E, Protein Size: 314
Molecular Weight:	34 kDa
Gene ID:	55286
NCBI Accession:	<a href="#">NM_018302</a> , <a href="#">NP_060772</a>
UniProt:	<a href="#">Q8IY42</a>

## Application Details

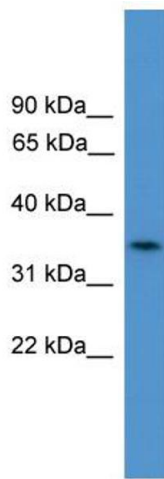
---

Application Notes:	Optimal working dilutions should be determined experimentally by the investigator.
Comment:	Antigen size: 314 AA
Restrictions:	For Research Use only

## Handling

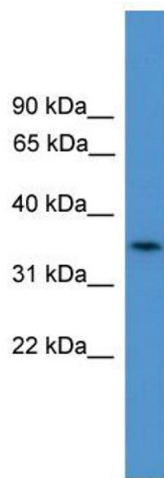
---

Format:	Liquid
Concentration:	Lot specific
Buffer:	Liquid. Purified antibody supplied in 1x PBS buffer with 0.09 % (w/v) sodium azide and 2 % sucrose.
Preservative:	Sodium azide
Precaution of Use:	This product contains Sodium azide: a POISONOUS AND HAZARDOUS SUBSTANCE which should be handled by trained staff only.
Handling Advice:	Avoid repeated freeze-thaw cycles.
Storage:	-20 °C
Storage Comment:	For short term use, store at 2-8°C up to 1 week. For long term storage, store at -20°C in small aliquots to prevent freeze-thaw cycles.



#### Western Blotting

**Image 1.** WB Suggested Anti-C4orf19 Antibody Titration: 0.2-1 ug/ml ELISA Titer: 1:312500 Positive Control: COLO205 cell lysate C4orf19 is supported by BioGPS gene expression data to be expressed in COLO205



#### Western Blotting

**Image 2.** WB Suggested Anti-C4orf19 Antibody Titration: 0.2-1 µg/mL ELISA Titer: 1:12500 Positive Control: COLO205 cell lysate C4orf19 is supported by BioGPS gene expression data to be expressed in COLO205