



[Go to Product page](#)

Datasheet for ABIN2775460

## anti-LRP2BP antibody (Middle Region)

### 3 Images

#### Overview

Quantity:	100 µL
Target:	LRP2BP
Binding Specificity:	Middle Region
Reactivity:	Human, Rat, Dog, Mouse, Cow, Horse, Rabbit, Guinea Pig, Zebrafish (Danio rerio), Pig
Host:	Rabbit
Clonality:	Polyclonal
Conjugate:	This LRP2BP antibody is un-conjugated
Application:	Western Blotting (WB)

#### Product Details

Sequence:	CGNGNLESQG ALGLMYLYGQ GIRQDTDAAL HCLREAAERG NVYAQGILVE
Predicted Reactivity:	Cow: 100%, Dog: 100%, Guinea Pig: 93%, Horse: 100%, Human: 100%, Mouse: 100%, Pig: 100%, Rabbit: 100%, Rat: 100%, Zebrafish: 92%
Characteristics:	This is a rabbit polyclonal antibody against Lrp2bp. It was validated on Western Blot.
Purification:	Affinity Purified

#### Target Details

Target:	LRP2BP
Alternative Name:	Lrp2bp ( <a href="#">LRP2BP Products</a> )
Background:	Lrp2bp may act as an adapter that regulates LRP2 function.

## Target Details

---

Alias Symbols: RGD1305896

Protein Size: 346

Molecular Weight: 40 kDa

Gene ID: 290753

NCBI Accession: [NM\\_001017443](#), [NP\\_001017443](#)

UniProt: [Q569C2](#)

## Application Details

---

Application Notes: Optimal working dilutions should be determined experimentally by the investigator.

Comment: Antigen size: 346 AA

Restrictions: For Research Use only

## Handling

---

Format: Liquid

Concentration: Lot specific

Buffer: Liquid. Purified antibody supplied in 1x PBS buffer with 0.09 % (w/v) sodium azide and 2 % sucrose.

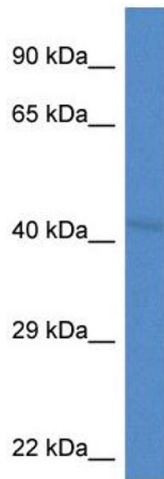
Preservative: Sodium azide

Precaution of Use: This product contains Sodium azide: a POISONOUS AND HAZARDOUS SUBSTANCE which should be handled by trained staff only.

Handling Advice: Avoid repeated freeze-thaw cycles.

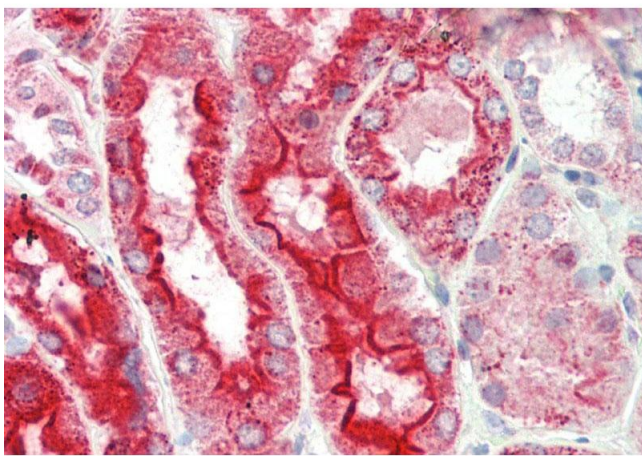
Storage: -20 °C

Storage Comment: For short term use, store at 2-8°C up to 1 week. For long term storage, store at -20°C in small aliquots to prevent freeze-thaw cycles.



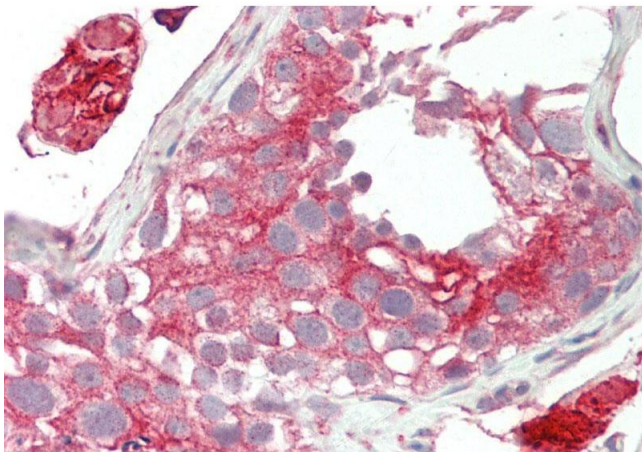
### Western Blotting

**Image 1.** WB Suggested Anti-Lrp2bp Antibody Titration: 1.0 ug/ml Positive Control: Rat Lung



### Immunohistochemistry

**Image 2.** Rabbit Anti-Lrp2bp antibody Formalin Fixed Paraffin Embedded Tissue: Human Kidney Primary antibody Concentration: 1:100 Secondary Antibody: Donkey anti-Rabbit-Cy3 Secondary Antibody Concentration: 1:200 Magnification: 20x Exposure Time: 0.5-2.0sec



### Immunohistochemistry

**Image 3.** Rabbit Anti-Lrp2bp antibody Formalin Fixed Paraffin Embedded Tissue: Human Testis Primary antibody Concentration: 1:100 Secondary Antibody: Donkey anti-Rabbit-Cy3 Secondary Antibody Concentration: 1:200 Magnification: 20x Exposure Time: 0.5-2.0sec