

Datasheet for ABIN2775462

anti-Gasdermin B antibody (N-Term)**1** Image**1** Publication[Go to Product page](#)

Overview

Quantity:	100 µL
Target:	Gasdermin B (GSDMB)
Binding Specificity:	N-Term
Reactivity:	Human, Horse
Host:	Rabbit
Clonality:	Polyclonal
Conjugate:	This Gasdermin B antibody is un-conjugated
Application:	Western Blotting (WB)

Product Details

Immunogen:	The immunogen is a synthetic peptide directed towards the N terminal region of human GSDML
Sequence:	HLVGEKRTFF GCRHYTTGLT LMDILDTDGD KWLDELDSSL QGQKAEFQIL
Predicted Reactivity:	Horse: 100%, Human: 100%
Characteristics:	This is a rabbit polyclonal antibody against GSDML. It was validated on Western Blot using a cell lysate as a positive control.
Purification:	Affinity Purified

Target Details

Target:	Gasdermin B (GSDMB)
---------	---------------------

Target Details

Alternative Name:	GSDML (GSDMB Products)
Background:	<p>GSDML belongs to the gasdermin family. GSDML may play a role as secretory or metabolic product involved in secretory pathway. It may also play a role in achieving and maintaining the final differentiation state of epithelial cells.</p> <p>Alias Symbols: PP4052, PRO2521, GSDML</p> <p>Protein Interaction Partner: SERPINA1, ORM1, IGFBP2, HIVEP1, AGT, PEBP1, APP,</p> <p>Protein Size: 394</p>
Molecular Weight:	45 kDa
Gene ID:	55876
NCBI Accession:	NM_018530 , NP_061000
UniProt:	Q8TAX9

Application Details

Application Notes:	Optimal working dilutions should be determined experimentally by the investigator.
Comment:	Antigen size: 394 AA
Restrictions:	For Research Use only

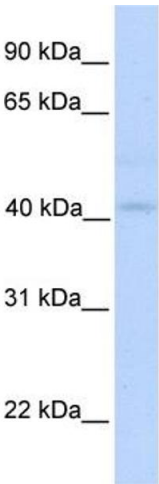
Handling

Format:	Liquid
Concentration:	Lot specific
Buffer:	Liquid. Purified antibody supplied in 1x PBS buffer with 0.09 % (w/v) sodium azide and 2 % sucrose.
Preservative:	Sodium azide
Precaution of Use:	This product contains Sodium azide: a POISONOUS AND HAZARDOUS SUBSTANCE which should be handled by trained staff only.
Handling Advice:	Avoid repeated freeze-thaw cycles.
Storage:	-20 °C
Storage Comment:	For short term use, store at 2-8°C up to 1 week. For long term storage, store at -20°C in small aliquots to prevent freeze-thaw cycles.

Publications

Product cited in: Infantino, Iacobazzi, Palmieri, Menga: "ATP-citrate lyase is essential for macrophage inflammatory response." in: **Biochemical and biophysical research communications**, Vol. 440, Issue 1, pp. 105-11, (2013) ([PubMed](#)).

Images



Western Blotting

Image 1. WB Suggested Anti-GSDML Antibody Titration: 0.2-1 ug/ml Positive Control: Human Muscle