

Datasheet for ABIN2775469  
**anti-GTPBP2 antibody (N-Term)**[Go to Product page](#)

## 3 Images

## Overview

Quantity:	100 µL
Target:	GTPBP2
Binding Specificity:	N-Term
Reactivity:	Human, Mouse, Rat, Dog, Cow, Guinea Pig, Horse, Goat, Zebrafish (Danio rerio)
Host:	Rabbit
Clonality:	Polyclonal
Conjugate:	This GTPBP2 antibody is un-conjugated
Application:	Western Blotting (WB)

## Product Details

Immunogen:	The immunogen is a synthetic peptide directed towards the N terminal region of human GTPBP2
Sequence:	GCGGPKGKKK NGRNRGGKAN NPPYLPPEAE DGNIEYKLKL VNPSQYRFEH
Predicted Reactivity:	Cow: 100%, Dog: 100%, Goat: 93%, Guinea Pig: 100%, Horse: 100%, Human: 100%, Mouse: 100%, Rat: 100%, Zebrafish: 86%
Characteristics:	This is a rabbit polyclonal antibody against GTPBP2. It was validated on Western Blot using a cell lysate as a positive control.
Purification:	Affinity Purified

## Target Details

Target:	GTPBP2
---------	--------

## Target Details

Alternative Name:	GTPBP2 ( <a href="#">GTPBP2 Products</a> )
Background:	<p>GTP-binding proteins, or G proteins, constitute a superfamily capable of binding GTP or GDP. G proteins are activated by binding GTP and are inactivated by hydrolyzing GTP to GDP. This general mechanism enables G proteins to perform a wide range of biologic activities. GTP-binding proteins, or G proteins, constitute a superfamily capable of binding GTP or GDP. G proteins are activated by binding GTP and are inactivated by hydrolyzing GTP to GDP. This general mechanism enables G proteins to perform a wide range of biologic activities.[supplied by OMIM]. PRIMARYREFSEQ_SPAN PRIMARY_IDENTIFIER PRIMARY_SPAN COMP 1-2966 BC064968.1 1-2966 2967-2996 BU736981.1 1-30 c</p> <p>Alias Symbols: MGC74725</p> <p>Protein Interaction Partner: DCP2, PRMT6, KDM1A, PRMT5, SUV39H1, UBC, IRF5,</p> <p>Protein Size: 602</p>
Molecular Weight:	66 kDa
Gene ID:	54676
NCBI Accession:	<a href="#">NM_019096</a> , <a href="#">NP_061969</a>
UniProt:	<a href="#">Q9BX10</a>

## Application Details

Application Notes:	Optimal working dilutions should be determined experimentally by the investigator.
Comment:	Antigen size: 602 AA
Restrictions:	For Research Use only

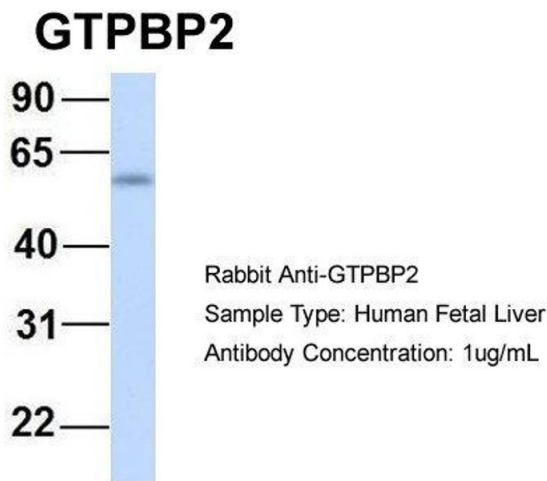
## Handling

Format:	Liquid
Concentration:	Lot specific
Buffer:	Liquid. Purified antibody supplied in 1x PBS buffer with 0.09 % (w/v) sodium azide and 2 % sucrose.
Preservative:	Sodium azide
Precaution of Use:	This product contains Sodium azide: a POISONOUS AND HAZARDOUS SUBSTANCE which should be handled by trained staff only.
Handling Advice:	Avoid repeated freeze-thaw cycles.

Handling

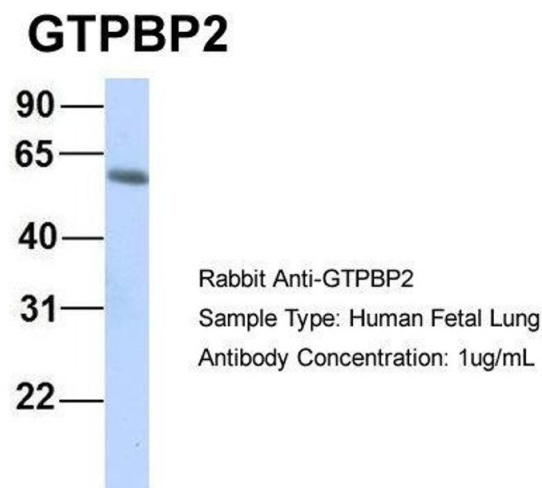
Storage:	-20 °C
Storage Comment:	For short term use, store at 2-8°C up to 1 week. For long term storage, store at -20°C in small aliquots to prevent freeze-thaw cycles.

Images



Western Blotting

**Image 1.** Host: Rabbit Target Name: GTPBP2 Sample Type: Human Fetal Liver Antibody Dilution: 1.0ug/ml



Western Blotting

**Image 2.** Host: Rabbit Target Name: GTPBP2 Sample Type: Human Fetal Lung Antibody Dilution: 1.0ug/ml



Western Blotting

**Image 3.** WB Suggested Anti-GTPBP2 Antibody Titration: 0.2-1 ug/ml ELISA Titer: 1:62500 Positive Control: Transfected 293T