



[Go to Product page](#)

Datasheet for ABIN2775473  
**anti-MAP3K7CL antibody (C-Term)**

3 Images

Overview

Quantity:	100 µL
Target:	MAP3K7CL
Binding Specificity:	C-Term
Reactivity:	Human, Rat, Mouse, Rabbit, Cow, Guinea Pig, Dog, Horse
Host:	Rabbit
Clonality:	Polyclonal
Conjugate:	This MAP3K7CL antibody is un-conjugated
Application:	Western Blotting (WB), Immunohistochemistry (IHC)

Product Details

Immunogen:	The immunogen is a synthetic peptide directed towards the C terminal region of human C21orf7
Sequence:	DSEESMEVFK QHCQIAEEYH EVKKEITLLE QRKKELIAKL DQAEKEKVDA
Predicted Reactivity:	Cow: 100%, Dog: 93%, Guinea Pig: 100%, Horse: 93%, Human: 100%, Mouse: 100%, Rabbit: 100%, Rat: 100%
Characteristics:	This is a rabbit polyclonal antibody against C21orf7. It was validated on Western Blot and immunohistochemistry.
Purification:	Protein A purified

Target Details

Target:	MAP3K7CL
---------	----------

## Target Details

---

Alternative Name:	C21orf7 ( <a href="#">MAP3K7CL Products</a> )
Background:	C21orf7 plays a critical role in the TGF-beta signaling transduction pathway. Alias Symbols: TAK1L, TAKL, TAKL-1, TAKL-2, TAKL-4, HC21ORF7, MAP3K7CL Protein Interaction Partner: TAB3, AK8, REL, KRT31, CISH, GPS2, Protein Size: 242
Molecular Weight:	27 kDa
Gene ID:	56911
NCBI Accession:	<a href="#">NM_020152</a> , <a href="#">NP_064537</a>
UniProt:	<a href="#">P57077</a>

## Application Details

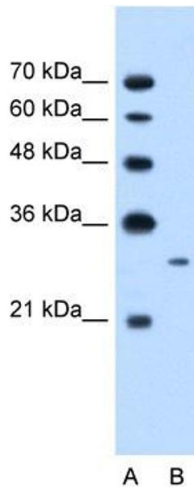
---

Application Notes:	Optimal working dilutions should be determined experimentally by the investigator.
Comment:	Antigen size: 242 AA
Restrictions:	For Research Use only

## Handling

---

Format:	Liquid
Concentration:	Lot specific
Buffer:	Liquid. Purified antibody supplied in 1x PBS buffer with 0.09 % (w/v) sodium azide and 2 % sucrose.
Preservative:	Sodium azide
Precaution of Use:	This product contains Sodium azide: a POISONOUS AND HAZARDOUS SUBSTANCE which should be handled by trained staff only.
Handling Advice:	Avoid repeated freeze-thaw cycles.
Storage:	-20 °C
Storage Comment:	For short term use, store at 2-8°C up to 1 week. For long term storage, store at -20°C in small aliquots to prevent freeze-thaw cycles.

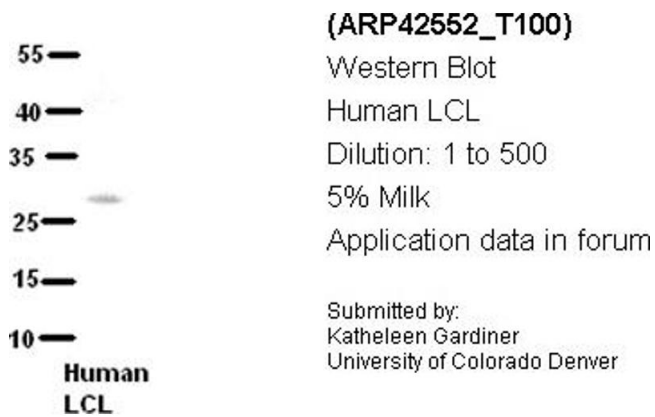


### Western Blotting

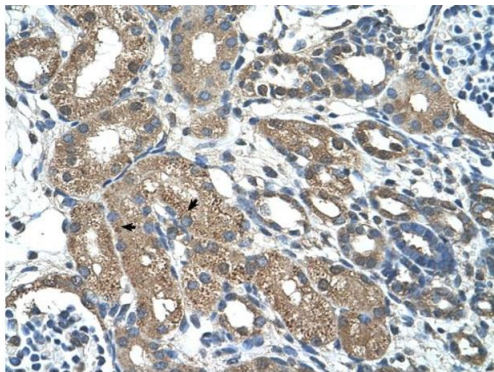
#### Image 1. WB Suggested Anti-C21orf7 Antibody Titration:

1.25ug/ml

**Positive Control:** Jurkat cell lysate



#### Image 2.



Rabbit Anti-C21orf7 Antibody  
Catalog Number: ARP42552  
Lot Number: QC12958  
Paraffin Embedded Tissue: Human Kidney  
Cells with Positive label: Epithelial cells of renal tubule (Indicated with Arrows)  
Antibody Concentration: 4.0-8.0 µg/ml  
Magnification: 400X

### Immunohistochemistry

#### Image 3. Human kidney