

Datasheet for ABIN2775484  
**anti-PSG3 antibody (N-Term)**[Go to Product page](#)

## 2 Images

## Overview

Quantity:	100 µL
Target:	PSG3
Binding Specificity:	N-Term
Reactivity:	Human
Host:	Rabbit
Clonality:	Polyclonal
Conjugate:	This PSG3 antibody is un-conjugated
Application:	Western Blotting (WB), Immunohistochemistry (IHC)

## Product Details

Immunogen:	The immunogen is a synthetic peptide directed towards the N terminal region of human PSG3
Sequence:	VYSNASLLIQ NVTREDAGSY TLHIVKRGDG TRGETGHFTF TLYLETPKPS
Predicted Reactivity:	Human: 100%
Characteristics:	This is a rabbit polyclonal antibody against PSG3. It was validated on Western Blot and immunohistochemistry.
Purification:	Protein A purified

## Target Details

Target:	PSG3
Alternative Name:	PSG3 ( <a href="#">PSG3 Products</a> )

## Target Details

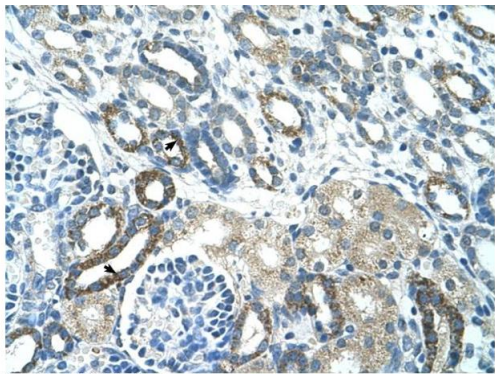
Background:	The function remains unknown. Protein Interaction Partner: FAM46A, PRKD2, SKIL, ATF7IP, Protein Size: 143
Molecular Weight:	16 kDa
Gene ID:	5671

## Application Details

Application Notes:	Optimal working dilutions should be determined experimentally by the investigator.
Comment:	Antigen size: 143 AA
Restrictions:	For Research Use only

## Handling

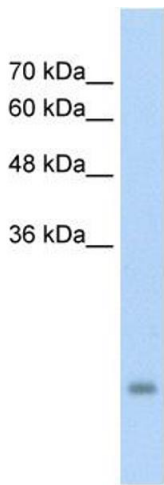
Format:	Liquid
Concentration:	Lot specific
Buffer:	Liquid. Purified antibody supplied in 1x PBS buffer with 0.09 % (w/v) sodium azide and 2 % sucrose.
Preservative:	Sodium azide
Precaution of Use:	This product contains Sodium azide: a POISONOUS AND HAZARDOUS SUBSTANCE which should be handled by trained staff only.
Handling Advice:	Avoid repeated freeze-thaw cycles.
Storage:	-20 °C
Storage Comment:	For short term use, store at 2-8°C up to 1 week. For long term storage, store at -20°C in small aliquots to prevent freeze-thaw cycles.



Rabbit Anti-PSG3 Antibody  
Catalog Number: ARP42577  
Lot Number: QC13049  
Paraffin Embedded Tissue: Human Kidney  
Cells with Positive label: Epithelial cells of renal tubule (Indicated with Arrows)  
Antibody Concentration: 4.0-8.0 µg/ml  
Magnification: 400X

Immunohistochemistry

Image 1. Human kidney



Western Blotting

Image 2. WB Suggested Anti-PSG3 Antibody Titration:  
5.0ug/ml Positive Control: HepG2 cell lysate