



[Go to Product page](#)

Datasheet for ABIN2775486  
**anti-ART4 antibody (Middle Region)**

2 Images

Overview

Quantity:	100 µL
Target:	ART4
Binding Specificity:	Middle Region
Reactivity:	Human, Rat, Cow, Pig, Sheep, Horse, Rabbit
Host:	Rabbit
Clonality:	Polyclonal
Conjugate:	This ART4 antibody is un-conjugated
Application:	Western Blotting (WB)

Product Details

Immunogen:	The immunogen is a synthetic peptide directed towards the middle region of human ART4
Sequence:	TLCYEVHYRT KDVHFNAYTG ATIRFGQFLS TSLKKEEAQE FGNQTLFTIF
Predicted Reactivity:	Cow: 85%, Horse: 85%, Human: 100%, Pig: 85%, Rabbit: 92%, Rat: 79%, Sheep: 85%
Characteristics:	This is a rabbit polyclonal antibody against ART4. It was validated on Western Blot using a cell lysate as a positive control.
Purification:	Affinity Purified

Target Details

Target:	ART4
Alternative Name:	ART4 ( <a href="#">ART4 Products</a> )

## Target Details

---

**Background:** ART4 is a protein that contains a mono-ADP-ribosylation (ART) motif. It is a member of the ADP-ribosyltransferase gene family but enzymatic activity has not been demonstrated experimentally. Antigens of the Dombrock blood group system are located on the gene product, which is glycosylphosphatidylinositol-anchored to the erythrocyte membrane. Allelic variants, some of which lead to adverse transfusion reactions, are known. This gene encodes a protein that contains a mono-ADP-ribosylation (ART) motif. It is a member of the ADP-ribosyltransferase gene family but enzymatic activity has not been demonstrated experimentally. Antigens of the Dombrock blood group system are located on the gene product, which is glycosylphosphatidylinositol-anchored to the erythrocyte membrane. Allelic variants, some of which lead to adverse transfusion reactions, are known. Publication Note: This RefSeq record includes a subset of the publications that are available for this gene. Please see the Entrez Gene record to access additional publications.

Alias Symbols: CD297, DO, DOK1

Protein Interaction Partner: UPF2, APP,

Protein Size: 314

---

**Molecular Weight:** 36 kDa

---

**Gene ID:** 420

---

**NCBI Accession:** [NM\\_021071](#), [NP\\_066549](#)

---

**UniProt:** [Q93070](#)

## Application Details

---

**Application Notes:** Optimal working dilutions should be determined experimentally by the investigator.

---

**Comment:** Antigen size: 314 AA

---

**Restrictions:** For Research Use only

## Handling

---

**Format:** Liquid

---

**Concentration:** Lot specific

---

**Buffer:** Liquid. Purified antibody supplied in 1x PBS buffer with 0.09 % (w/v) sodium azide and 2 % sucrose.

---

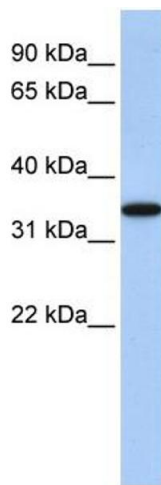
**Preservative:** Sodium azide

---

## Handling

Precaution of Use:	This product contains Sodium azide: a POISONOUS AND HAZARDOUS SUBSTANCE which should be handled by trained staff only.
Handling Advice:	Avoid repeated freeze-thaw cycles.
Storage:	-20 °C
Storage Comment:	For short term use, store at 2-8°C up to 1 week. For long term storage, store at -20°C in small aliquots to prevent freeze-thaw cycles.

## Images



**ART4**



### Western Blotting

**Image 1.** WB Suggested Anti-ART4 Antibody Titration: 0.2-1 ug/ml ELISA Titer: 1:312500 Positive Control: Human heart

### Western Blotting

**Image 2.** Host: Rabbit Target Name: ART4 Sample Tissue: Human Stomach Tumor Antibody Dilution: 1.0ug/ml